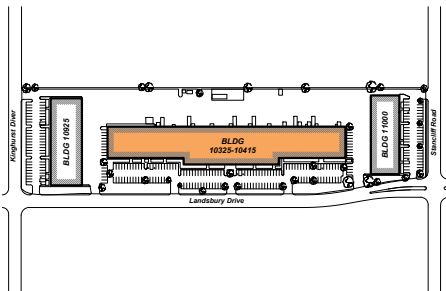


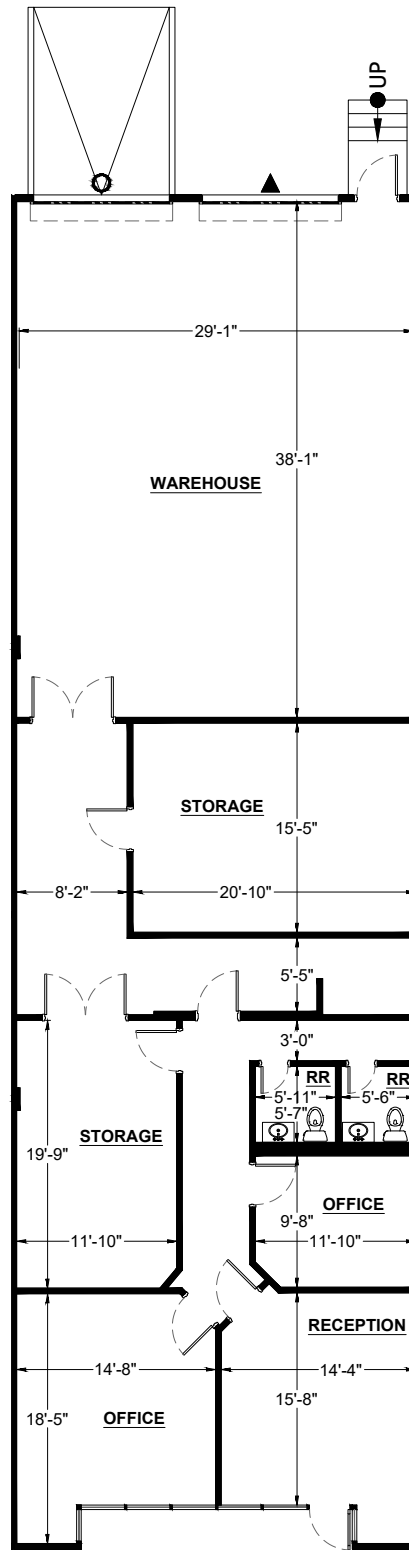
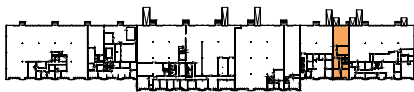
SUITE DATA:

OFFICE	1,840 SF
ASSEMBLY	1,160 SF
TOTAL	3,000 SF
CLEAR HEIGHT	17'-6" - 18'-3"
○ GRADE LEVEL DOORS	1
▲ DOCK HIGH DOORS	1

SITE KEY PLAN:



BUILDING KEY PLAN:



Southwest Business Park

10325-10415 Landsbury Drive
Houston, TX 77099

Bldg. 10325-10415

STE 208

04/09/26