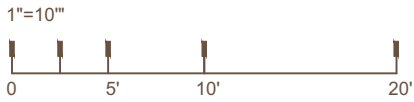
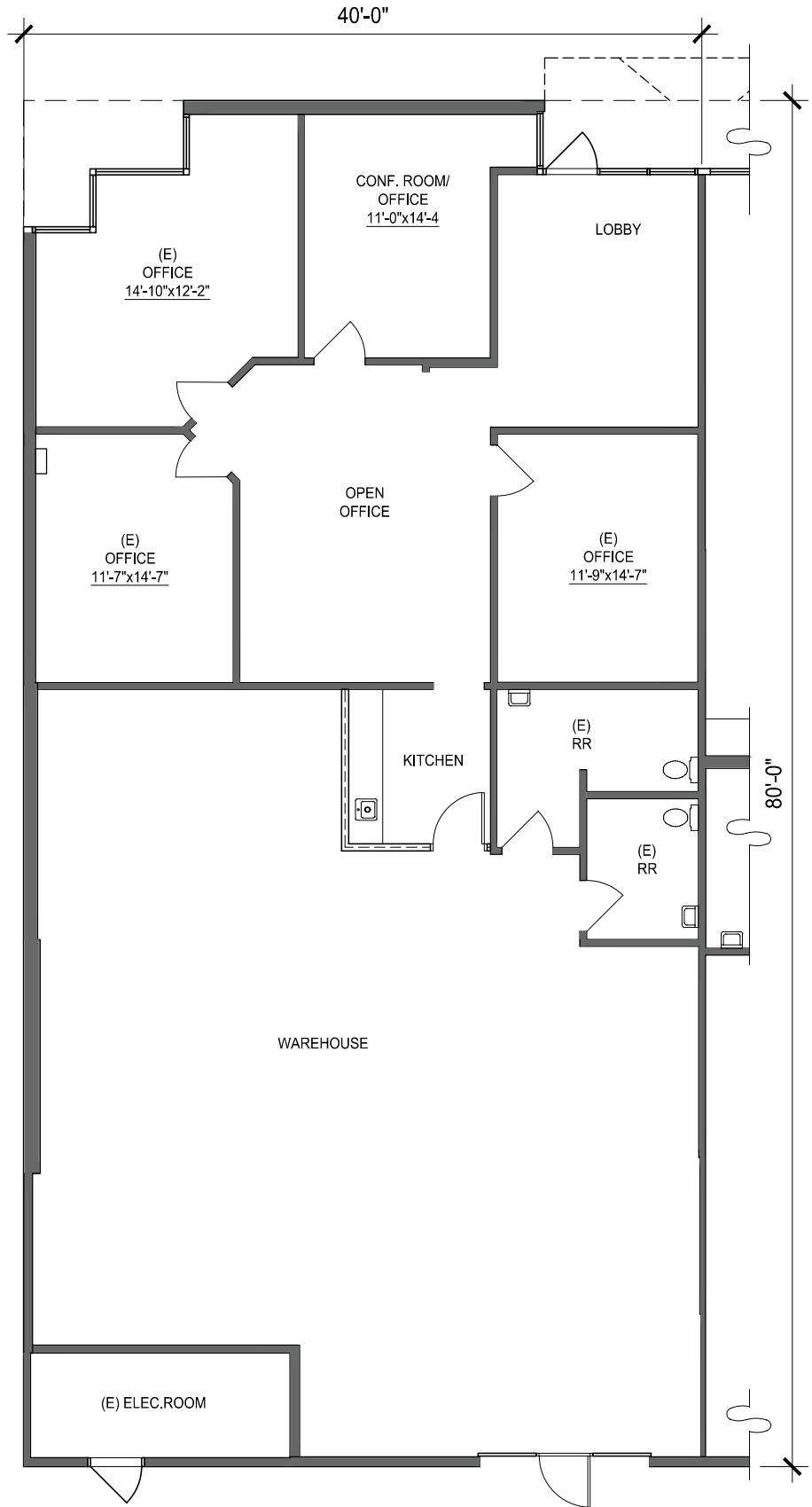
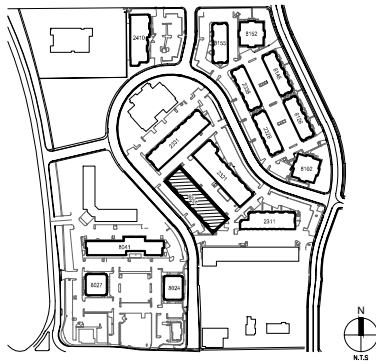


**SUITE DATA:**

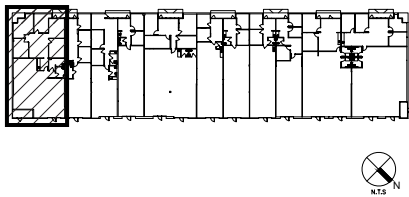
|                         |                 |
|-------------------------|-----------------|
| OFFICE AREA             | 1,639 SF        |
| WAREHOUSE AREA          | 1,470 SF        |
| <b>TOTAL SUITE AREA</b> | <b>3,109 SF</b> |



**SITE KEY PLAN**



**BUILDING KEY PLAN**



**Black Canyon Business Park**

8055 N. 24th Ave.  
Phoenix, AZ, 85021

**BLDG. 8055**

**SUITE N**

**10/12/2015**