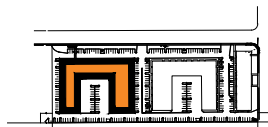
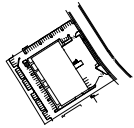


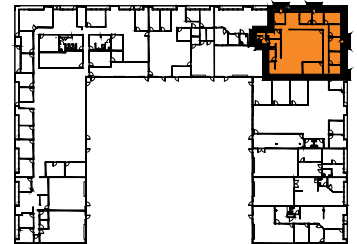
SUITE DATA:

OFFICE AREA	4,051 SF
WAREHOUSE AREA	0 SF
TOTAL SUITE AREA	4,051 SF

SITE KEY PLAN:



BUILDING KEY PLAN:



OWNED BY
BKM CAPITAL PARTNERS

Bradshaw

9912 Business Park Drive
Sacramento, CA 95827

Bldg. 9912
STE 170

03/02/20