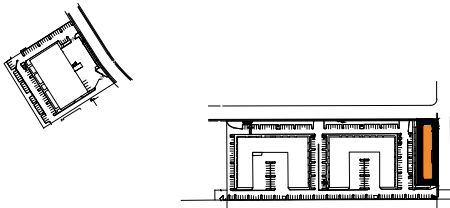


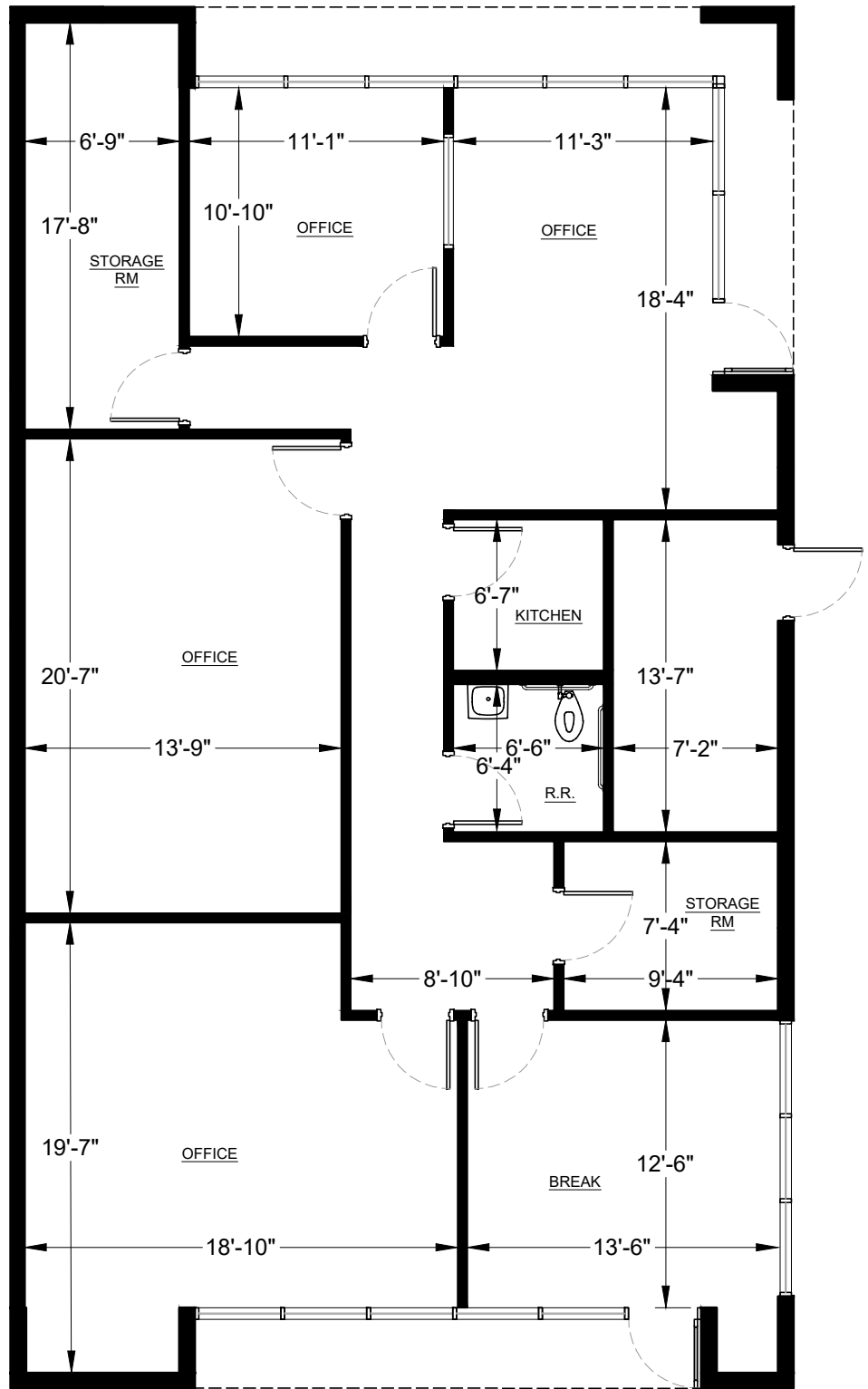
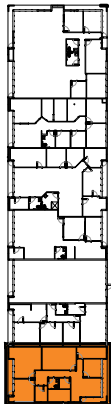
SUITE DATA:

OFFICE AREA	1,920 SF
WAREHOUSE AREA	0 SF
TOTAL SUITE AREA	1,920 SF

SITE KEY PLAN:



BUILDING KEY PLAN:



OWNED BY
BKM CAPITAL PARTNERS

Bradshaw

9960 Business Park Drive
Sacramento, CA 95827

Bldg. 9960
STE 170

03/02/20