

ROSE GARDEN BUSINESS PARK

1801-1831 W. ROSE GARDEN LANE & 20801-20823 N. 19TH AVE • PHOENIX, AZ 85027



- Nine buildings totaling 157,101 SF (office/industrial)
- Available suites ranging from 3,648 to 8,145 SF ready for immediate occupancy, with various percent office build-outs
- 18' clear height and 10x10 grade level loading
- 2.6:1,000 parking ratio
- Shared truckwell
- Frontage on 19th Ave and Rose Garden Ln, and close proximity to the Loop 101 and I-17 Freeways
- 2017 improvements completed: roof, landscaping, parking lot, and signage
- Aggressive ownership

Property Summary

| | |
|---------------|------------|
| AVAILABLE SF | SF |
| BUILDING SIZE | 157,631 SF |
| MARKET | Phoenix |

For more information, please contact:

RICKY BORANE

LEASING MANAGER
BKM MANAGEMENT COMPANY
P. 602.362.0803
E. RBORANE@BKMMGMT.COM

CONNER LEE

LEASING AGENT
LEE & ASSOCIATES
P. 602.474.9516
E. CLEE@LEEARIZONA.COM

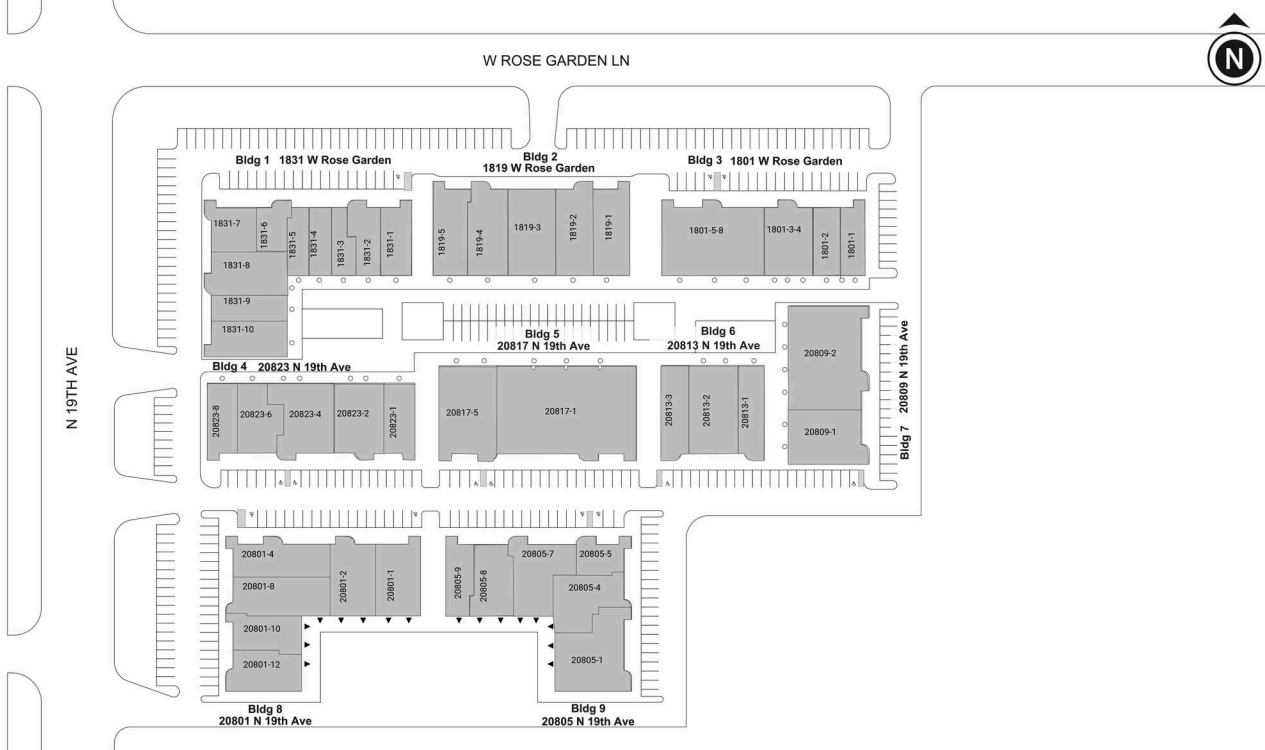
ROSE GARDEN BUSINESS PARK

1801-1831 W. ROSE GARDEN LANE & 20801-20823 N. 19TH AVE • PHOENIX, AZ 85027



LEGEND

- ▲ DOCK HIGH DOORS
- GRADE LEVEL DOORS



■ AVAILABLE ■ OCCUPIED

Current Availabilities

| BUILDING | SUITE | TOTAL SIZE | OFFICE SIZE | OFFICE % | TYPE | CLEAR HT | GL | DL |
|----------|-------|------------|-------------|----------|------|----------|----|----|
|----------|-------|------------|-------------|----------|------|----------|----|----|

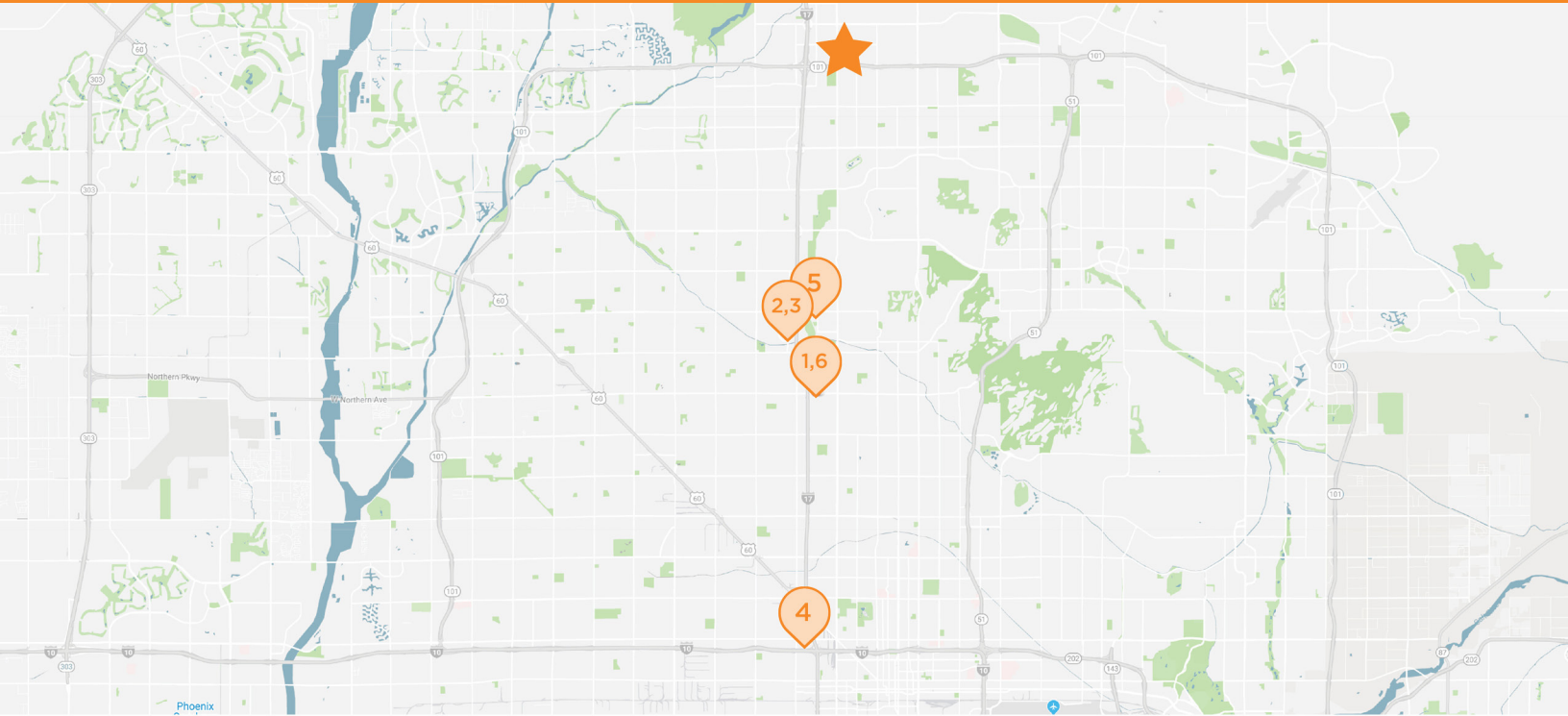
ROSE GARDEN BUSINESS PARK

1801-1831 W. ROSE GARDEN LANE & 20801-20823 N. 19TH AVE • PHOENIX, AZ 85027



ROSE GARDEN BUSINESS PARK

1801-1831 W. ROSE GARDEN LANE & 20801-20823 N. 19TH AVE • PHOENIX, AZ 85027



ROSE GARDEN BUSINESS PARK

1801-1831 W. Rose Garden Ln. & 20801-20823 N. 19th Ave., Phoenix, AZ 85027



WELLS FARGO

2302 W. Northern Ave.
Phoenix, AZ



SEARS

9617 N. Metro Pkwy. W
Phoenix, AZ



METROCENTER MALL

9617 N. Metro Pkwy. W
Phoenix, AZ



CACTUS RECYCLING

2522 W. McDowell Rd.
Phoenix, AZ



FEDEX SHIPPING

2320 W. Peoria
Phoenix, AZ



US POST OFFICE

8155 N Black Canyon Hwy.
Phoenix, AZ