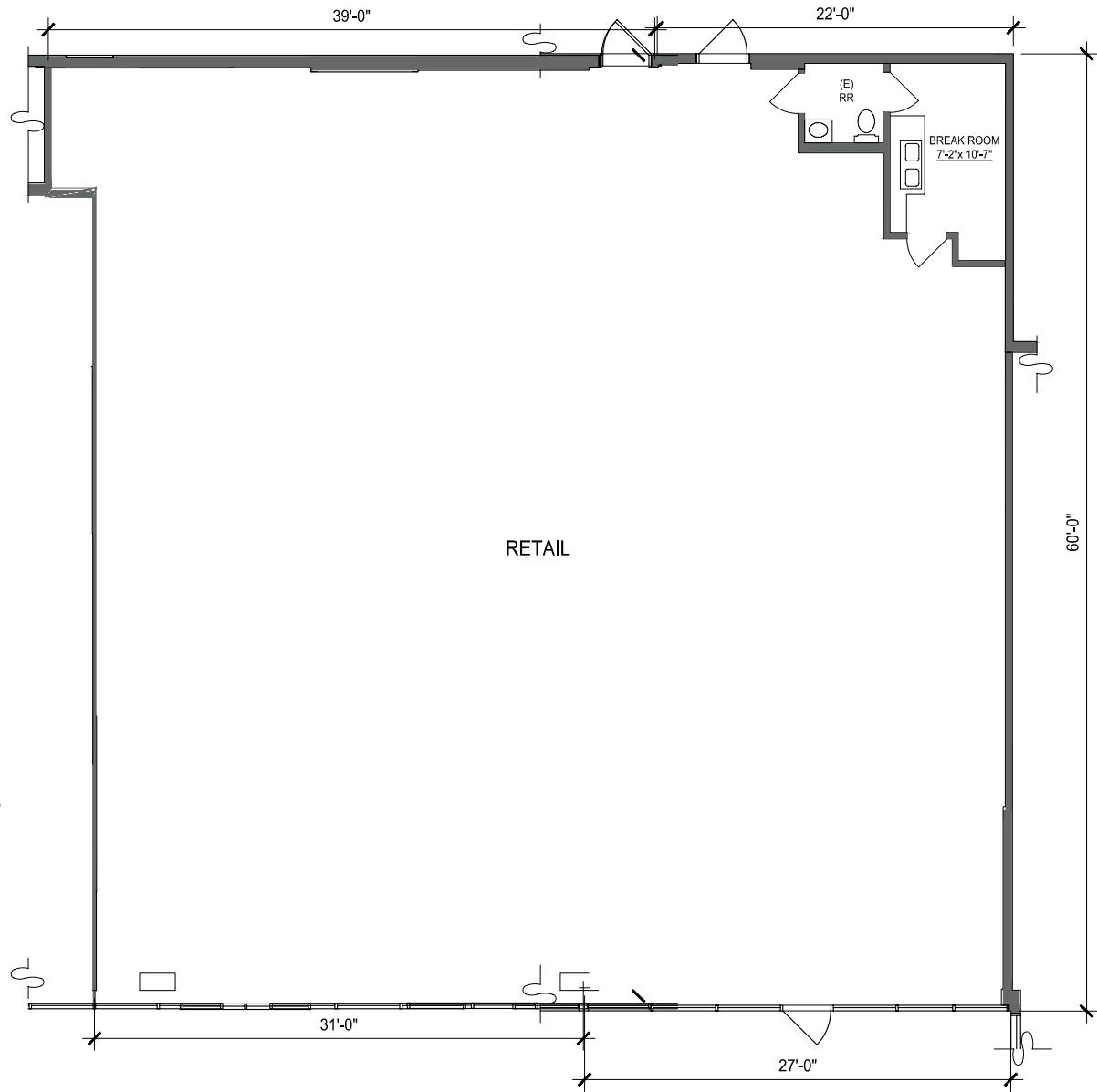


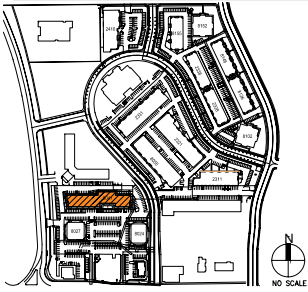
SUITE DATA:

OFFICE AREA 2,274 SF

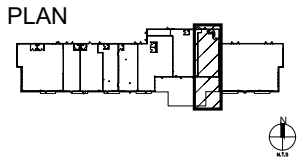
TOTAL SUITE AREA 2,274 SF



SITE KEY PLAN



BUILDING KEY PLAN



Black Canyon Business Park

BLDG. 8041

8041 N. 24th Ave.
Phoenix, AZ, 85021

SUITE B-C

7/27/2015