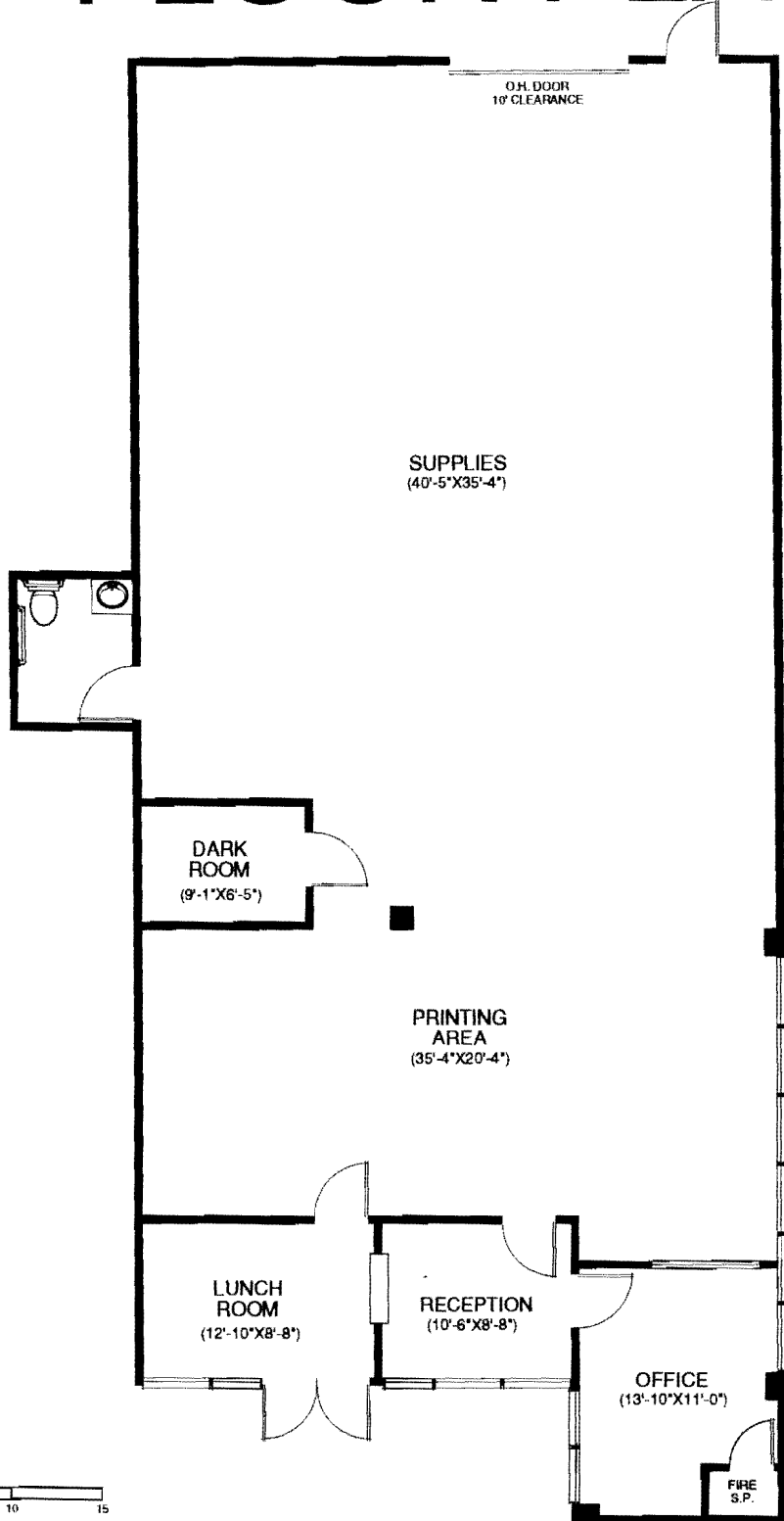
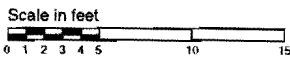




# FLOOR PLAN



ALL OFFICES ARE CARPETED



1831 West Rose Garden Lane, Suite 10		2,880 S.F.
OFFICE SPACE 556 S.F.	WAREHOUSE 2,324 S.F.	WAREHOUSE CEILING HEIGHT 15 FEET
<b>ROSE GARDEN BUSINESS CENTER</b>		

NOTE: All information represented on this drawing is believed to be accurate. However, tenant should verify all pertinent information prior to committing to a lease.