

# SEATAC INDUSTRIAL PARK

18908-18940 13TH PL S • SEATAC, WA 98148



- Close proximity to I-5, SR-99 and SR-509
- South of SeaTac International Airport

## Property Summary

<b>AVAILABLE SF</b>	3,867-4,896 SF
<b>BUILDING SIZE</b>	129,677 SF
<b>MARKET</b>	Seattle

**For more information, please contact:**

**TAYLOR HAZARD, MBA**  
SENIOR LEASING MANAGER  
BKM MANAGEMENT  
P. 206.487.7027  
E. THAZARD@BKMMGMT.COM

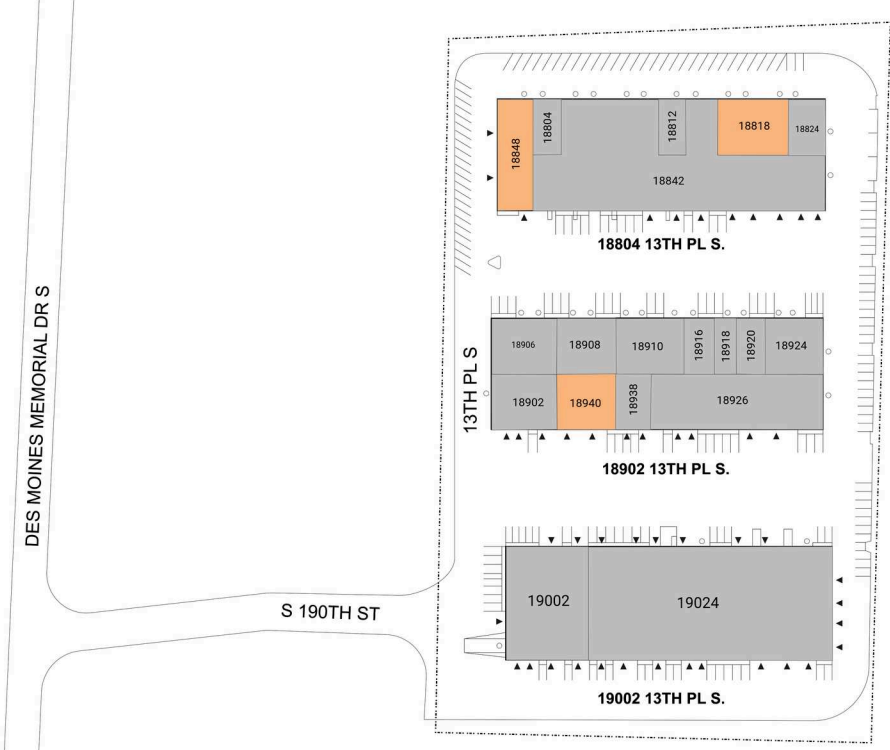
# SEATAC INDUSTRIAL PARK

18908-18940 13TH PL S • SEATAC, WA 98148



**LEGEND**

- ▲ DOCK HIGH DOORS
- GRADE LEVEL DOORS



■ AVAILABLE ■ OCCUPIED

## Current Availabilities

BUILDING	SUITE	TOTAL SIZE	OFFICE SIZE	OFFICE %	TYPE	CLEAR HT	GL	DL
1	18818	3,867	560	14	N/A	3	0	
1	18848	4,809	527	11	N/A	3	1	
2	18940	4,896	1,176	24	N/A	0	2	

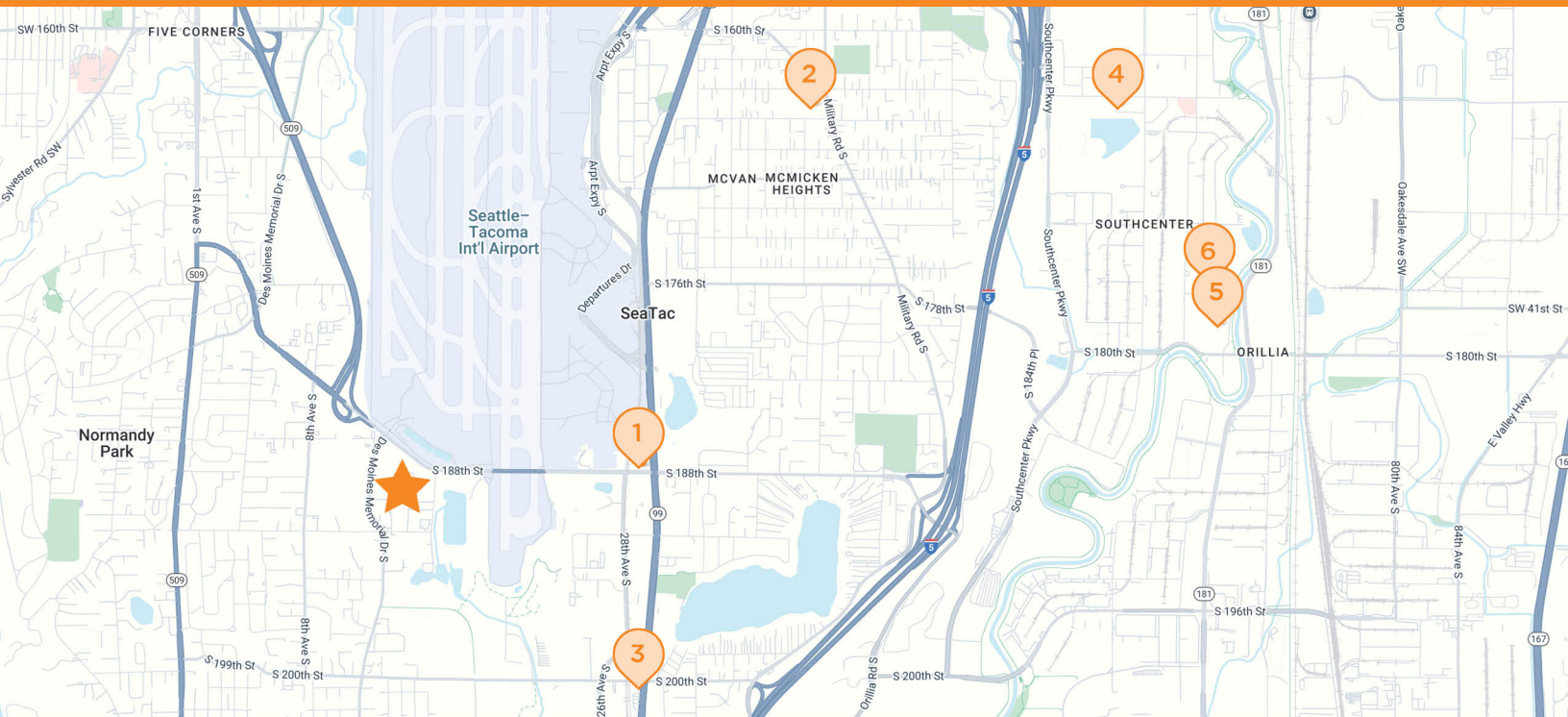
# SEATAC INDUSTRIAL PARK

18908-18940 13TH PL S • SEATAC, WA 98148




# SEATAC INDUSTRIAL PARK


18908-18940 13TH PL S • SEATAC, WA 98148




 **SEATAC INDUSTRIAL PARK**  
18908-18940 13th Pl S, SeaTac, WA 98148

 **1 LA QUINTA INN**  
2824 S 188th St  
Seattle, WA

 **2 SAFEWAY**  
4011 S 164th St  
Seattle, WA

 **3 CHEVRON**  
19923 Pacific Hwy S  
SeaTac, WA

 **4 CHASE BANK**  
321 Strander Blvd  
Tukwila, WA

 **5 THE HOME DEPOT**  
6810 S 180th St  
Tukwila, WA

 **6 COSTCO**  
400 Costco Dr #150  
Tukwila, WA