

SEATAC INDUSTRIAL PARK

18908-18940 13TH PL S • SEATAC, WA 98148



- Close proximity to I-5, SR-99 and SR-509
- South of SeaTac International Airport

Property Summary

AVAILABLE SF	3,904-4,896 SF
BUILDING SIZE	132,527 SF
MARKET	Seattle

For more information, please contact:

TAYLOR HAZARD, MBA
SENIOR LEASING MANAGER
BKM MANAGEMENT
P. 206.487.7027
E. THAZARD@BKMMGMT.COM

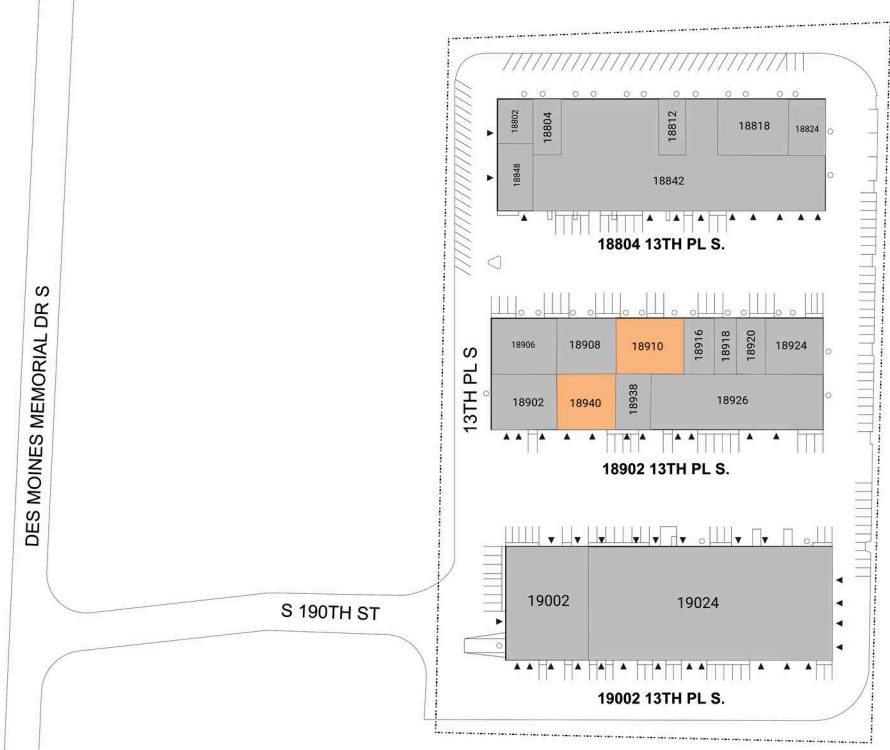
SEATAC INDUSTRIAL PARK

18908-18940 13TH PL S • SEATAC, WA 98148



LEGEND

- ▲ DOCK HIGH DOORS
- GRADE LEVEL DOORS



■ AVAILABLE ■ OCCUPIED

Current Availabilities

BUILDING	SUITE	TOTAL SIZE	OFFICE SIZE	OFFICE %	TYPE	CLEAR HT	GL	DL
2	18910	3,904	725	19	IND	3	0	
2	18940	4,896	1,176	24	IND	0	2	

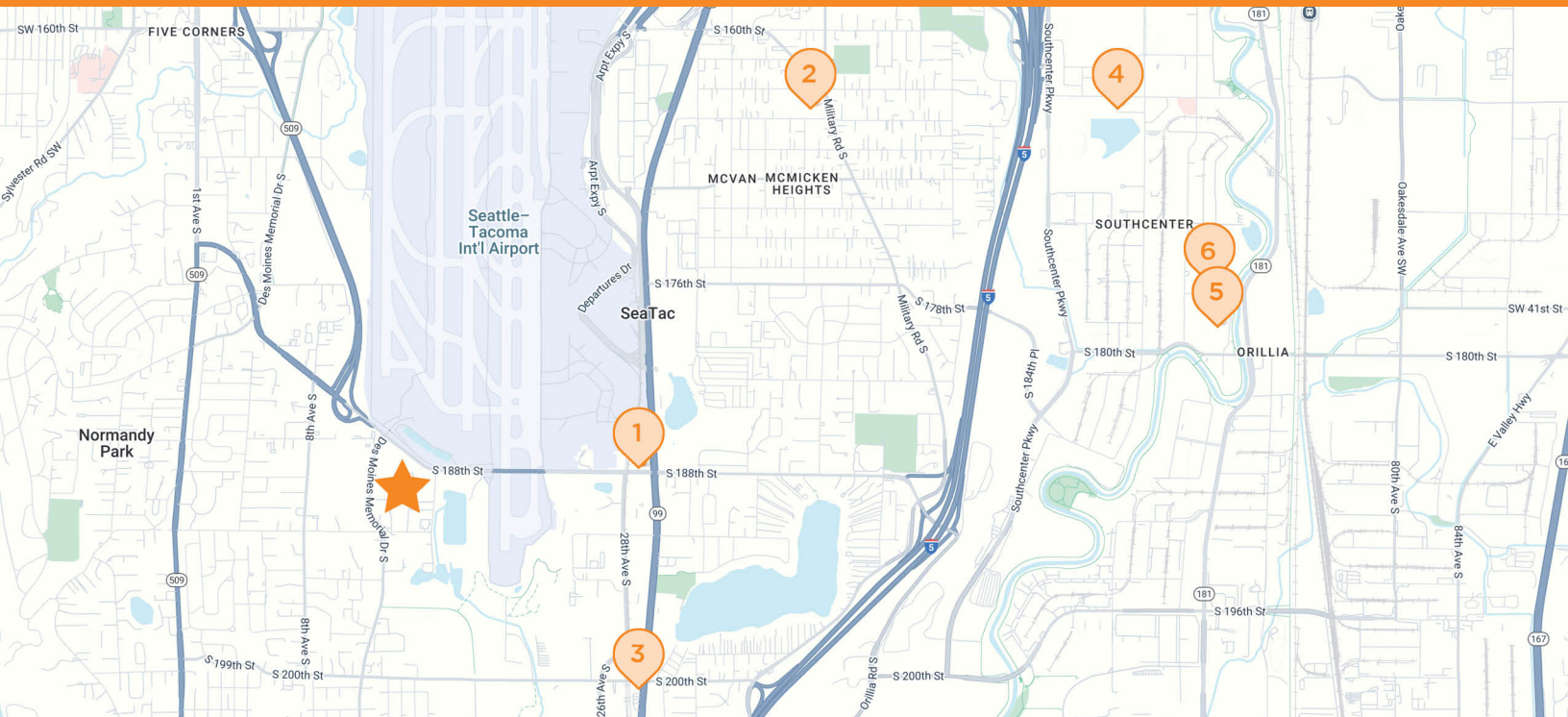
SEATAC INDUSTRIAL PARK

18908-18940 13TH PL S • SEATAC, WA 98148




SEATAC INDUSTRIAL PARK

18908-18940 13TH PL S • SEATAC, WA 98148




 **SEATAC INDUSTRIAL PARK**
18908-18940 13th Pl S, SeaTac, WA 98148

 **LA QUINTA INN**
2824 S 188th St
Seattle, WA

 **SAFeway**
4011 S 164th St
Seattle, WA

 **CHEVRON**
19923 Pacific Hwy S
SeaTac, WA

 **CHASE BANK**
321 Strander Blvd
Tukwila, WA

 **THE HOME DEPOT**
6810 S 180th St
Tukwila, WA

 **COSTCO**
400 Costco Dr #150
Tukwila, WA