

HANNOVER INDUSTRIAL PARK

43777 & 43815 S GRIMMER BOULEVARD, 4755-4775, 4801-4805, 4811-4817, 4900 & 4850 HANNOVER PLACE • FREMONT, CA 94538



- Located just minutes from the Tesla Factory, San Jose International Airport, and Port of Oakland, with unparalleled freeway visibility at I-880 and Auto Mall Parkway.
- Surrounded by corporate anchors (Tesla, Seagate, Facebook, Google)

Property Summary

AVAILABLE SF	10,894-20,992 SF
BUILDING SIZE	165,243 SF
RENOVATED	2025
MARKET	Oakland / East Bay

For more information, please contact:

COLBY MIKULICH
LEASING MANAGER
P. 510-370-2864
E. CMIKULICH@BKMMGMT.COM

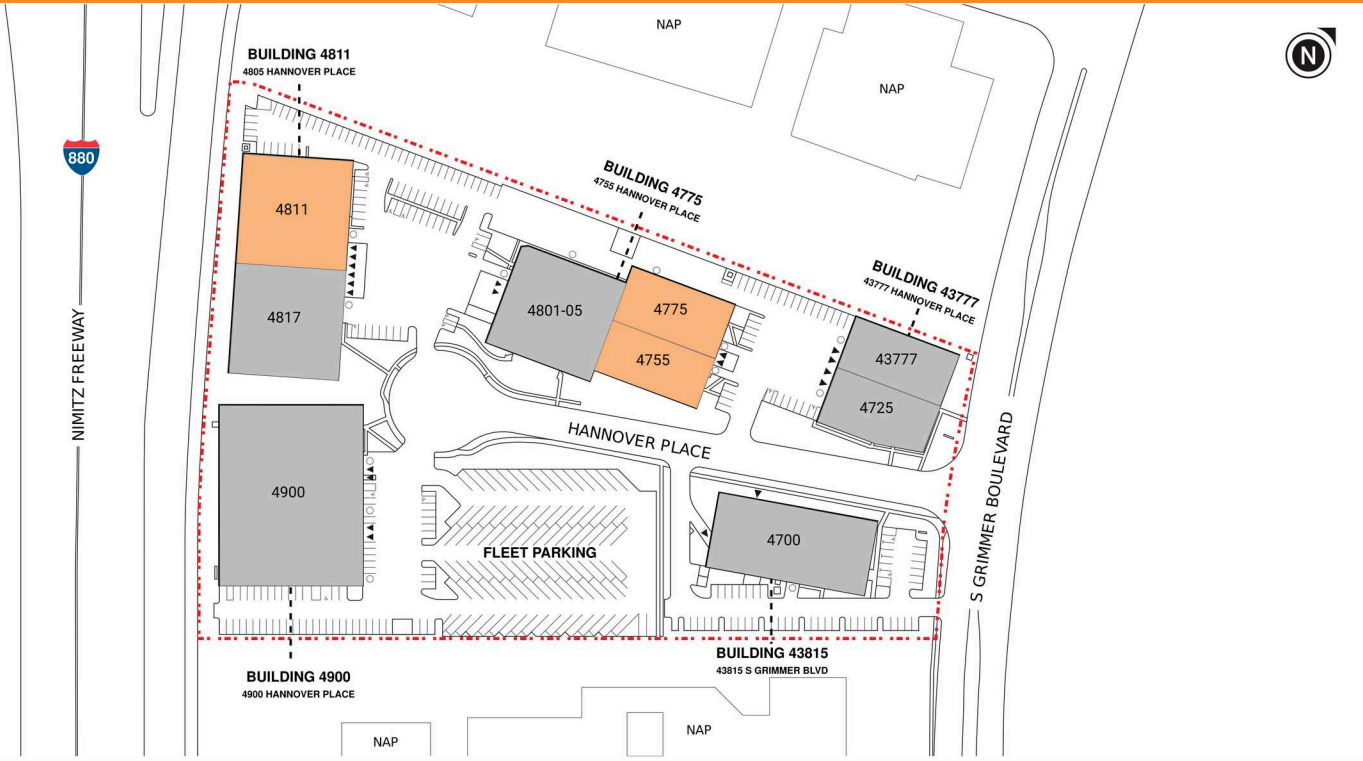
JOEY MCSWEENEY
LEASING AGENT
CBRE
P. 408-467-7553
E. JOEY.MCSWEENEY@CBRE.COM

HANNOVER INDUSTRIAL PARK

43777 & 43815 S GRIMMER BOULEVARD, 4755-4775, 4801-4805, 4811-4817, 4900 & 4850 HANNOVER PLACE • FREMONT, CA 94538



LEGEND	
▲	DOCK HIGH DOORS
○	GRADE LEVEL DOORS
▲	BELOW-GRADE DOORS



■ AVAILABLE ■ OCCUPIED

Current Availabilities

BUILDING	SUITE	TOTAL SIZE	OFFICE SIZE	OFFICE %	TYPE	CLEAR HT	GL	DL
3	4755	11,520	2,552	22	IND	1	1	
3	4775	10,894	2,176	20	IND	2	1	
4	4811	20,992	1,979	9	IND	1	3	

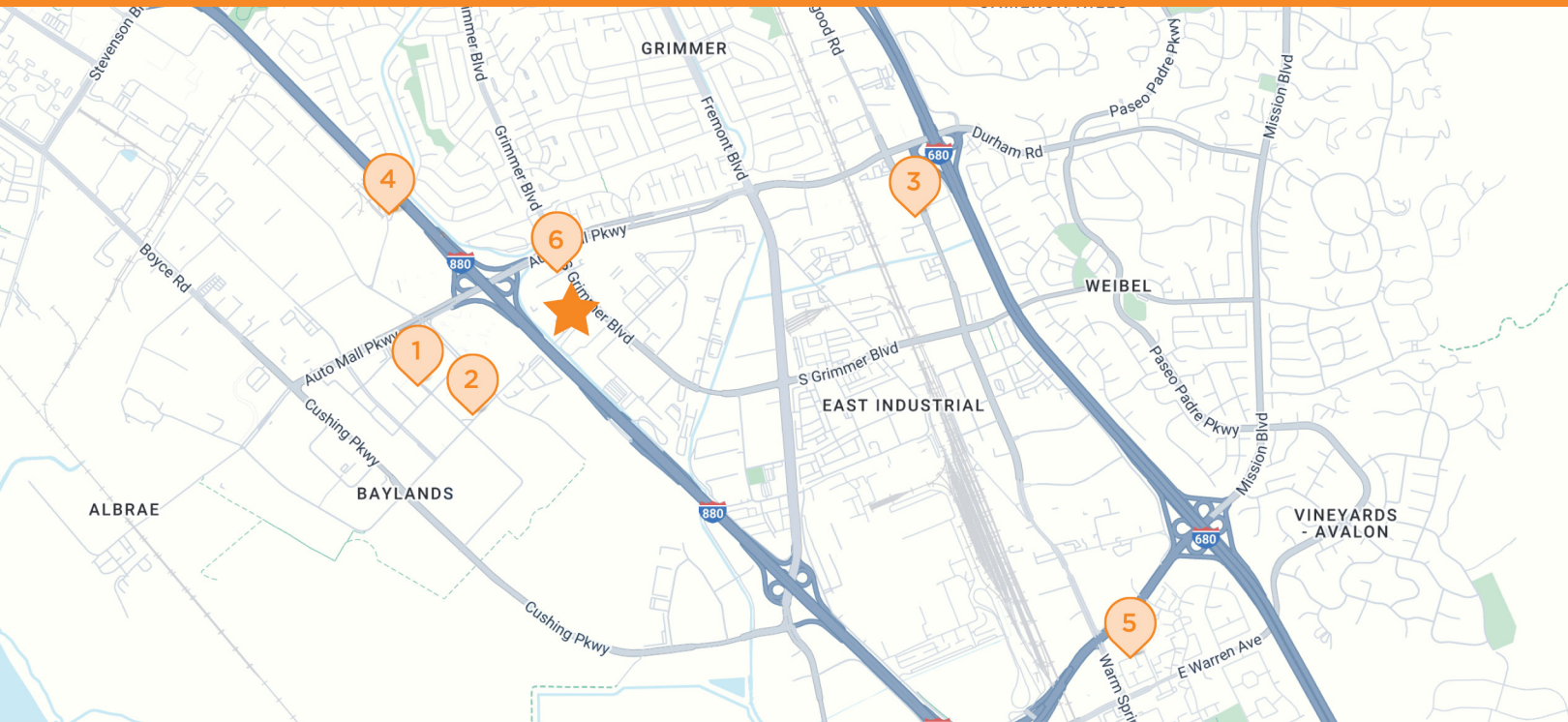
HANNOVER INDUSTRIAL PARK

43777 & 43815 S GRIMMER BOULEVARD, 4755-4775, 4801-4805, 4811-4817, 4900 & 4850 HANNOVER PLACE • FREMONT, CA 94538



HANNOVER INDUSTRIAL PARK

43777 & 43815 S GRIMMER BOULEVARD, 4755-4775, 4801-4805, 4811-4817, 4900 & 4850 HANNOVER PLACE • FREMONT, CA 94538



HANNOVER INDUSTRIAL PARK

4755-4900 Hannover Place and 4377 & 43815 S Grimmer Boulevard, Fremont, CA 94538

- 1 LOWE'S HOME IMPROVEMENT**
43612 Pacific Commons Blvd
Fremont, CA
- 2 TARGET**
43950 Pacific Commons Blvd
Fremont, CA
- 3 WELLS FARGO**
44029 Osgood Rd Ste 100
Fremont, CA
- 4 HOLIDAY INN EXPRESS**
42200 Albrae St
Fremont, CA
- 5 SAFEWAY**
46848 Mission Blvd
Fremont, CA
- 6 CHEVRON**
43601 S Grimmer Blvd #6347
Fremont, CA