

OLYMPIC INDUSTRIAL PARK

19111 DES MOINES MEMORIAL DR • SEATAC, WA



- Prime multi-tenant warehouse space near SeaTac International Airport
- Located in SeaTac, WA, with direct access to I-5, Highway 99, and the future SR 509 extension
- Warehouse includes 26 dock-high doors, 7 grade-level doors
- 74,327 SF light industrial warehouse space

Property Summary

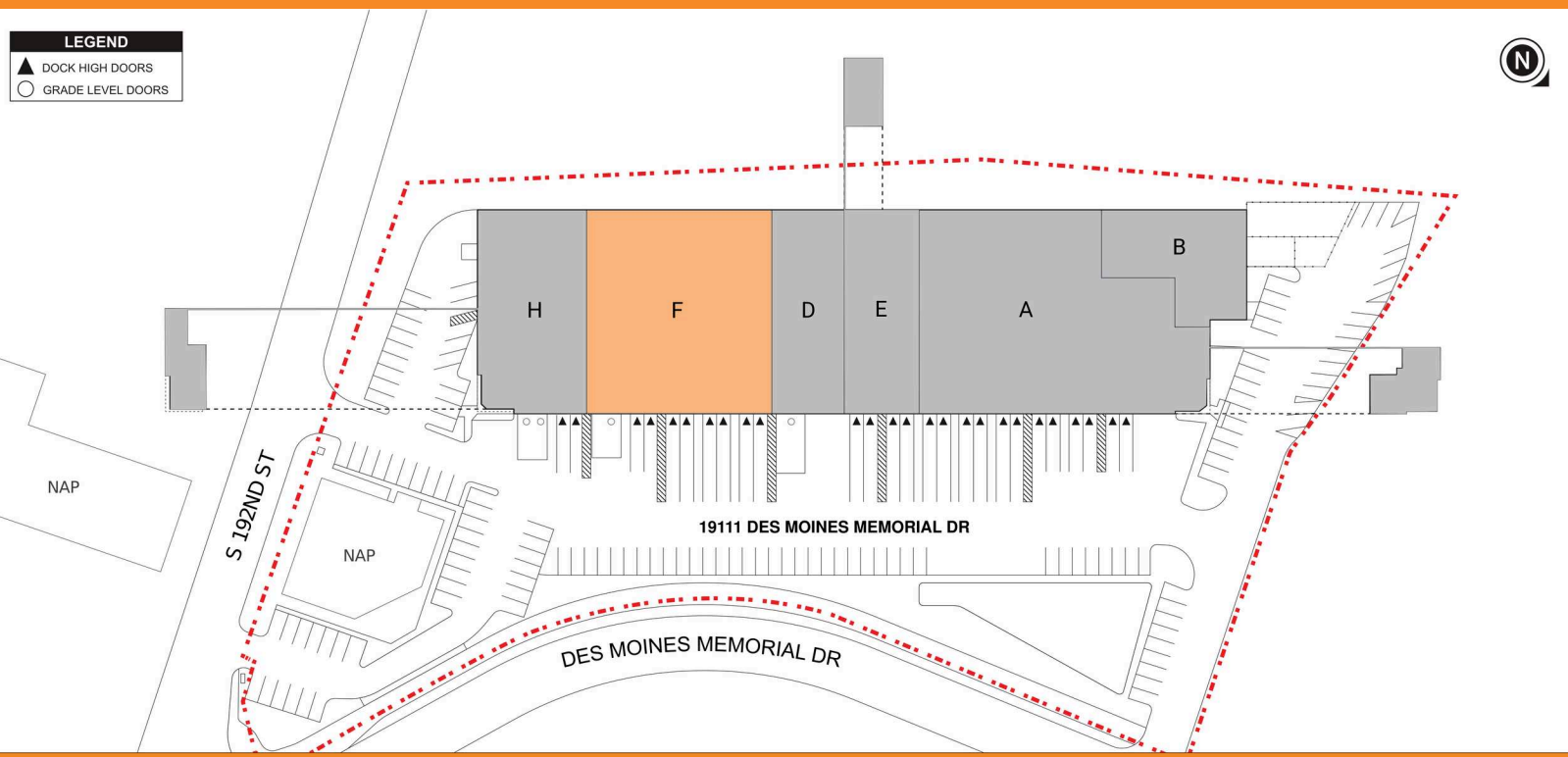
AVAILABLE SF	17,507-17,507 SF
BUILDING SIZE	74,334 SF
RENOVATED	2025
MARKET	Seattle

For more information, please contact:

NICCOLINA MERLINO
LEASING MANAGER
BKM MANAGEMENT
P. 206.487.7044
E. NERLINO@BKMMGMT.COM

LEGEND

- ▲ DOCK HIGH DOORS
- GRADE LEVEL DOORS



■ AVAILABLE ■ OCCUPIED

Current Availabilities

BUILDING	SUITE	TOTAL SIZE	OFFICE SIZE	OFFICE %	TYPE	CLEAR HT	GL	DL
19111	F	17,507	1,406	8	IND	1	8	

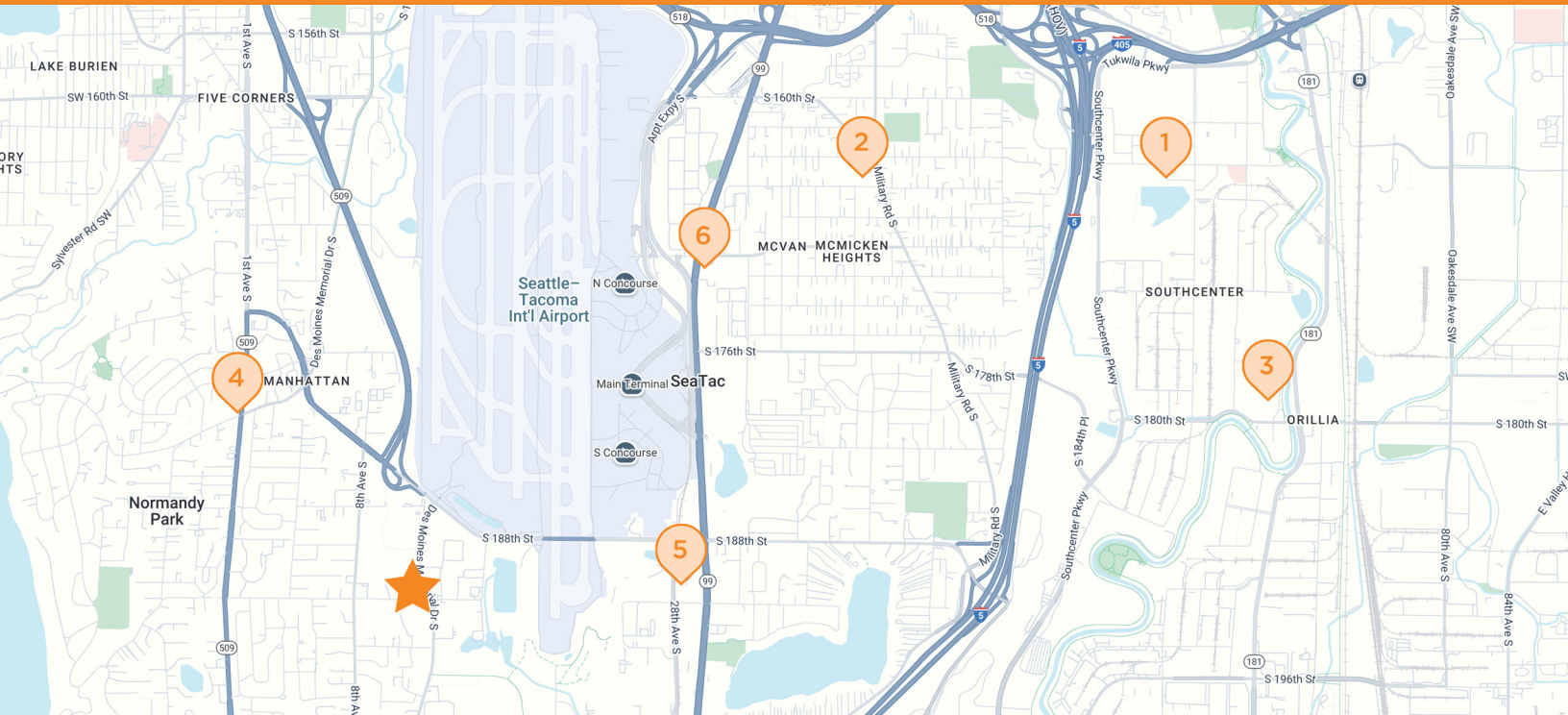
OLYMPIC INDUSTRIAL PARK

19111 DES MOINES MEMORIAL DR • SEATAC, WA



OLYMPIC INDUSTRIAL PARK

1911 DES MOINES MEMORIAL DR • SEATAC, WA



★ OLYMPIC INDUSTRIAL PARK
1911 Des Moines Memorial Dr & 1200 S 192nd St, SeaTac, WA, 98148

1 CHASE BANK
321 Strander Blvd
Tukwila, WA

2 SAFEWAY
4011 S 164th St
Seattle, WA

3 THE HOME DEPOT
6810 S 180th St
Tukwila, WA

4 STARBUCKS
17827 1st Ave S
Seattle, WA

5 HAMPTON INN
18850 28th Ave S
SeaTac, WA

6 SHELL
17956 1st Ave S
Burien, WA