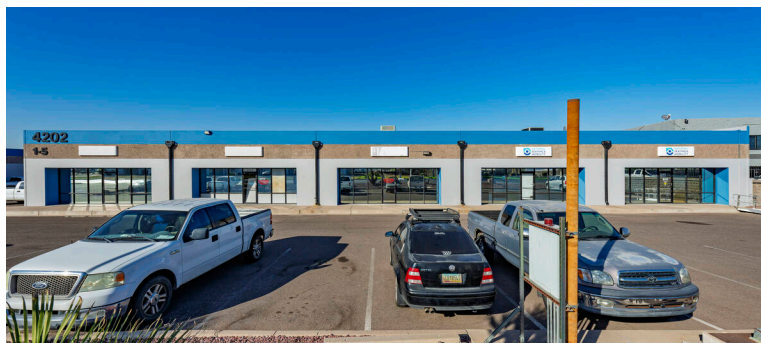


ELWOOD INDUSTRIAL PARK

4202 E. ELWOOD ST. • PHOENIX, AZ 85040



- 133,076 SF multi-tenant complex with four buildings in a prime Airport submarket location.
- Offers 18' clear heights, 12 dock-high doors, and 18 grade-level doors for diverse industrial operations.
- Flexible suite sizes to accommodate various business needs.
- Excellent access to major freeways and Phoenix Sky Harbor International Airport for streamlined distribution.

Property Summary

AVAILABLE SF	2,016-2,016 SF
BUILDING SIZE	112,544 SF
RENOVATED	2025
MARKET	Phoenix

For more information, please contact:

RICKY BORANE
LEASING MANAGER
BKM MANAGEMENT COMPANY
P. 602.362.0803
E. RBORANE@BKMMGMT.COM

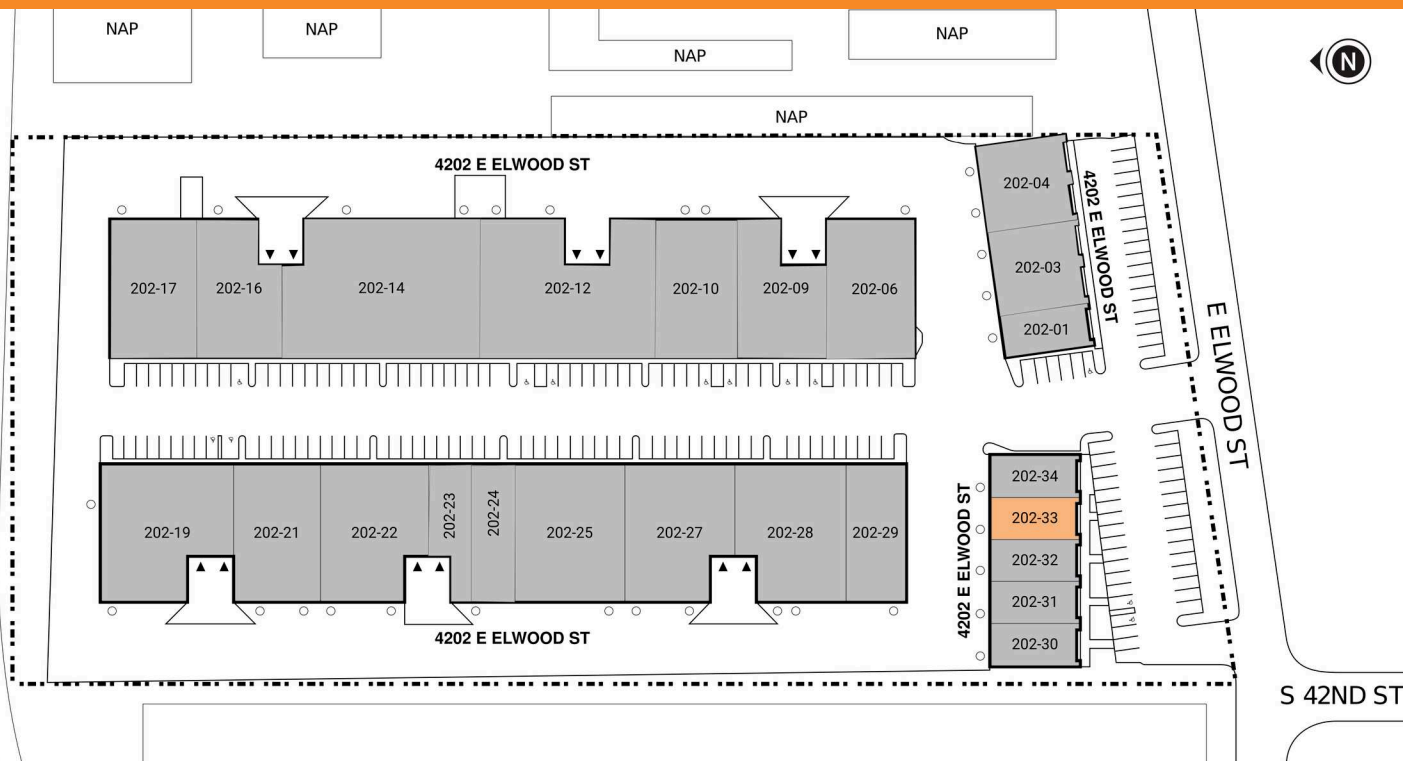
ELWOOD INDUSTRIAL PARK

4202 E. ELWOOD ST. • PHOENIX, AZ 85040



LEGEND

- ▲ DOCK HIGH DOORS
- GRADE LEVEL DOORS



■ AVAILABLE ■ OCCUPIED

Current Availabilities

BUILDING	SUITE	TOTAL SIZE	OFFICE SIZE	OFFICE %	TYPE	CLEAR HT	GL	DL
N/A	202-33	2,016	1,019	50	N/A	1	0	

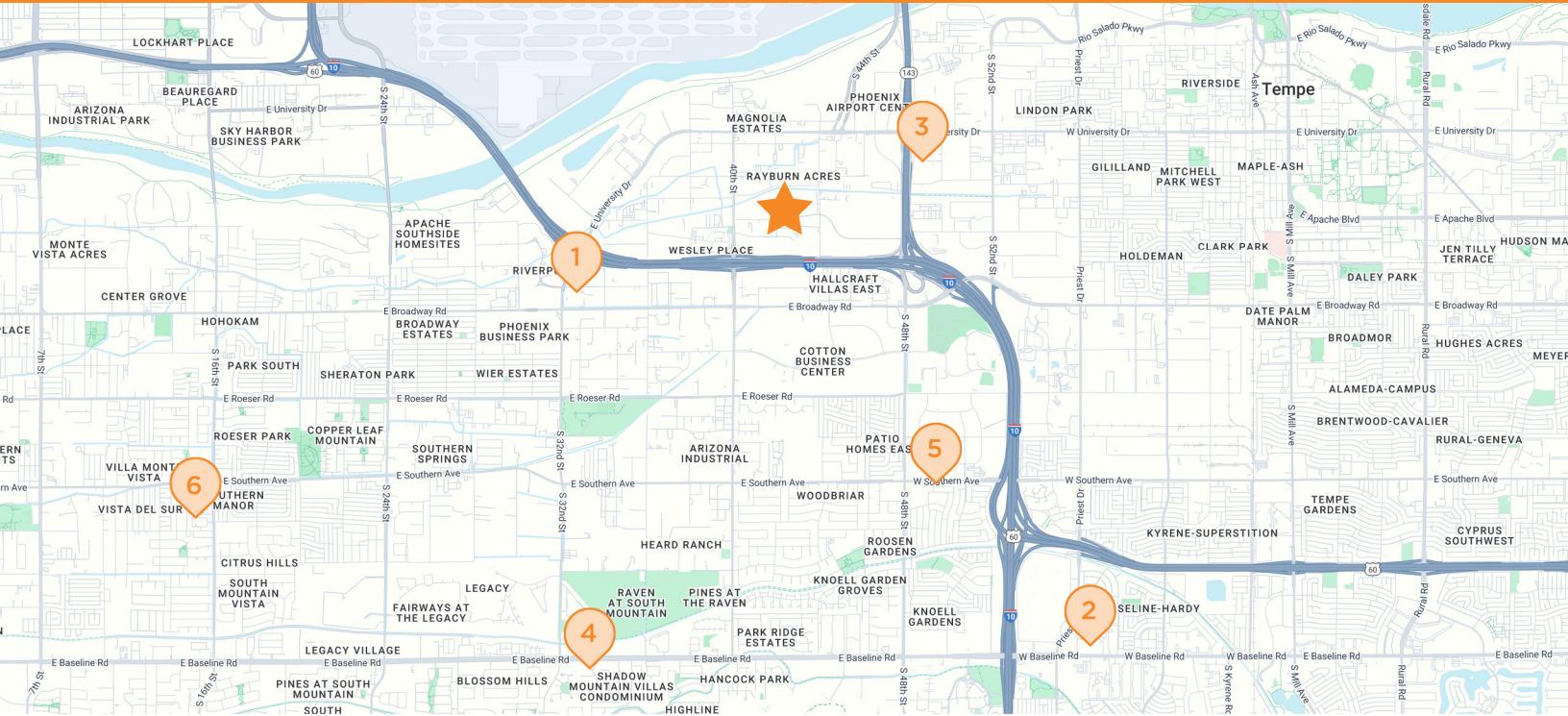
ELWOOD INDUSTRIAL PARK

4202 E. ELWOOD ST. • PHOENIX, AZ 85040



ELWOOD INDUSTRIAL PARK

4202 E. ELWOOD ST. • PHOENIX, AZ 85040



 **ELWOOD INDUSTRIAL PARK**
4202 E. Elwood St., Phoenix, AZ 85040

- | | | |
|---|---|---|
| <p>1 ARCO
1725 Arnold Industrial Pl
Concord, CA</p> | <p>2 HAMPTON INN
1785 Pine St
Concord, CA</p> | <p>3 SAFEWAY
2600 Willow Pass Rd
Concord, CA</p> |
| <p>4 COSTCO WHOLESALE
2400 Monument Blvd
Concord, CA</p> | <p>5 STARBUCKS
3373 Port Chicago Hwy
Concord, CA</p> | <p>6 CHASE BANK
2097 Salvio St
Concord, CA</p> |