

ORION COMMERCE PARK

124-125 & 136 W. ORION ST., 6100 S. MAPLE AVE., 6105 & 6125 S. ASH AVE. • TEMPE, AZ 85283



- 177,354 SF spread across nine buildings.
- Centrally located in Tempe with direct access to Loop 101, US-60, and Phoenix Sky Harbor International Airport.
- Unit sizes support a wide range of tenant requirements.
- Clear heights of 18' and multiple loading options enhance operational capabilities.

Property Summary

AVAILABLE SF	1,176-4,368 SF
BUILDING SIZE	167,224 SF
MARKET	Tempe

For more information, please contact:

RICKY BORANE

LEASING MANAGER

BKM MANAGEMENT COMPANY

P. 602.362.0803

E. RBORANE@BKMMGMT.COM

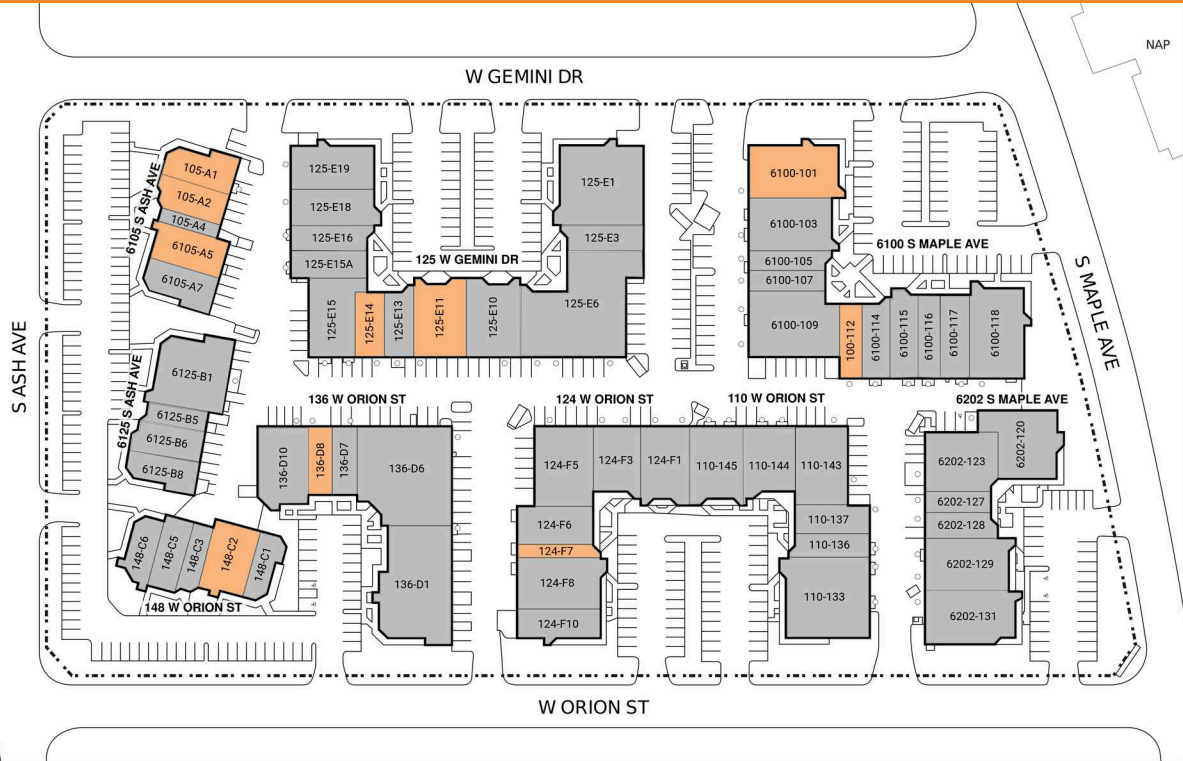
ORION COMMERCE PARK

124-125 & 136 W. ORION ST., 6100 S. MAPLE AVE., 6105 & 6125 S. ASH AVE. • TEMPE, AZ 85283



LEGEND

- ▲ DOCK HIGH DOORS
- GRADE LEVEL DOORS



■ AVAILABLE ■ OCCUPIED

Current Availabilities

BUILDING	SUITE	TOTAL SIZE	OFFICE SIZE	OFFICE %	TYPE	CLEAR HT	GL	DL
N/A	100-112	1,632	939	54	N/A	1	0	
N/A	105-A1	1,176	2,030	39	N/A	1	0	
N/A	105-A2	2,332	2,030	39	N/A	1	0	
N/A	124-F7	1,817	1,862	100	N/A	1	0	
N/A	125-E11	2,736	1,520	55	N/A	1	0	
N/A	125-E14	1,543	752	48	N/A	1	0	
N/A	136-D8	1,582	1,582	100	N/A	1	0	
N/A	148-C2	2,150	905	42	N/A	0	0	
N/A	6100-101	4,368	4,485	100	N/A	1	0	
N/A	6105-A5	2,320	1,202	52	N/A	1	0	

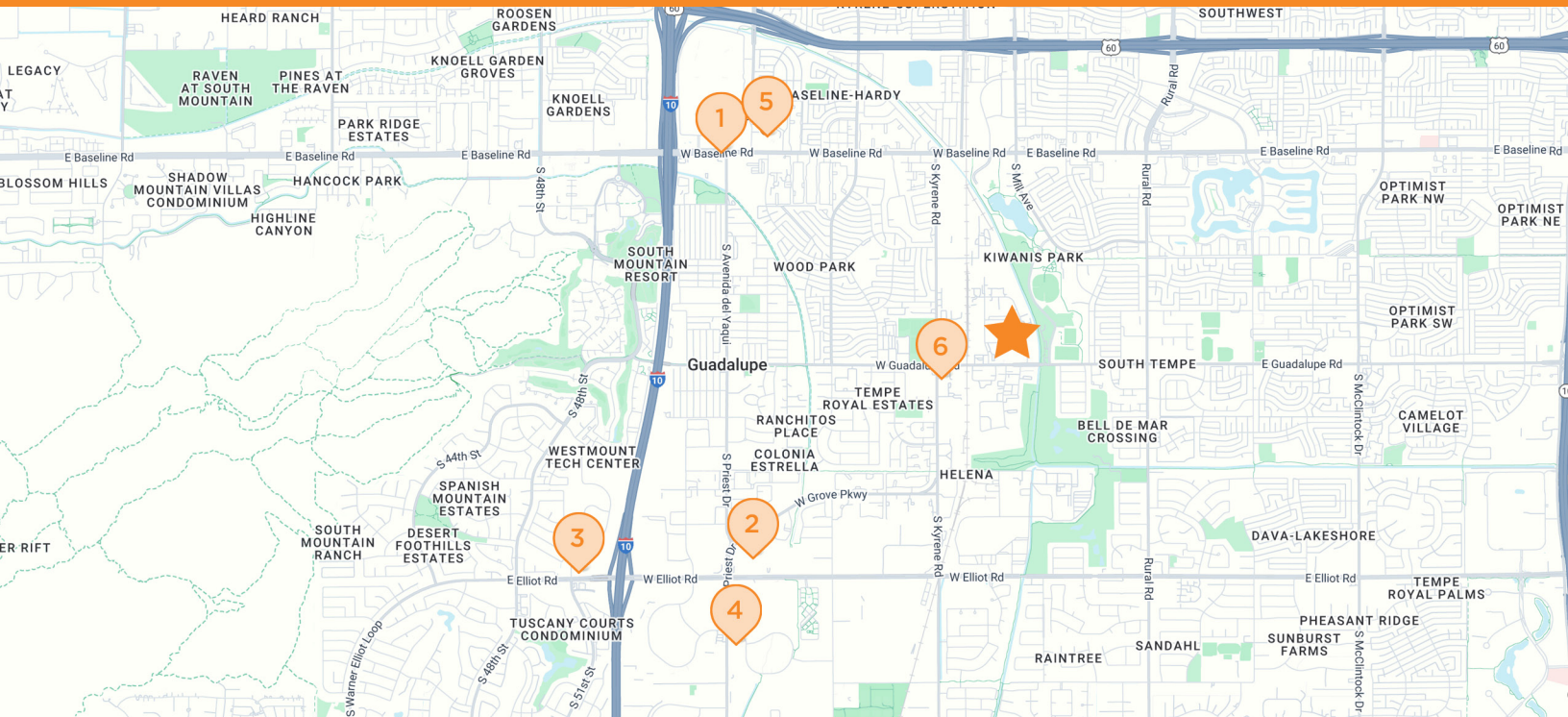
ORION COMMERCE PARK

124-125 & 136 W. ORION ST., 6100 S. MAPLE AVE., 6105 & 6125 S. ASH AVE. • TEMPE, AZ 85283



ORION COMMERCE PARK

124-125 & 136 W. ORION ST., 6100 S. MAPLE AVE., 6105 & 6125 S. ASH AVE. • TEMPE, AZ 85283



 **ORION COMMERCE PARK**
124-125 & 136 W. Orion St., 6100 S. Maple Ave., 6105 & 6125 S. Ash Ave., Tempe, AZ 85283

 **HOLIDAY INN**
1520 W Baseline Rd
Tempe, AZ

 **WALMART**
1380 W Elliot Rd
Tempe, AZ

 **WELLS FARGO BANK**
10651 S 51st St
Tempe, AZ

 **THE FIX COFFEE**
1445 W Auto Dr
Tempe, AZ

 **THE HOME DEPOT**
1330 W Baseline Rd
Tempe, AZ

 **CHEVRON**
475 W Guadalupe Rd
Tempe, AZ