

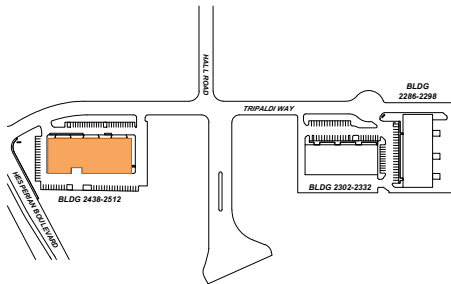
SUITE DATA:

OFFICE	1,617 SF
WAREHOUSE	3,667 SF
TOTAL	5,284 SF

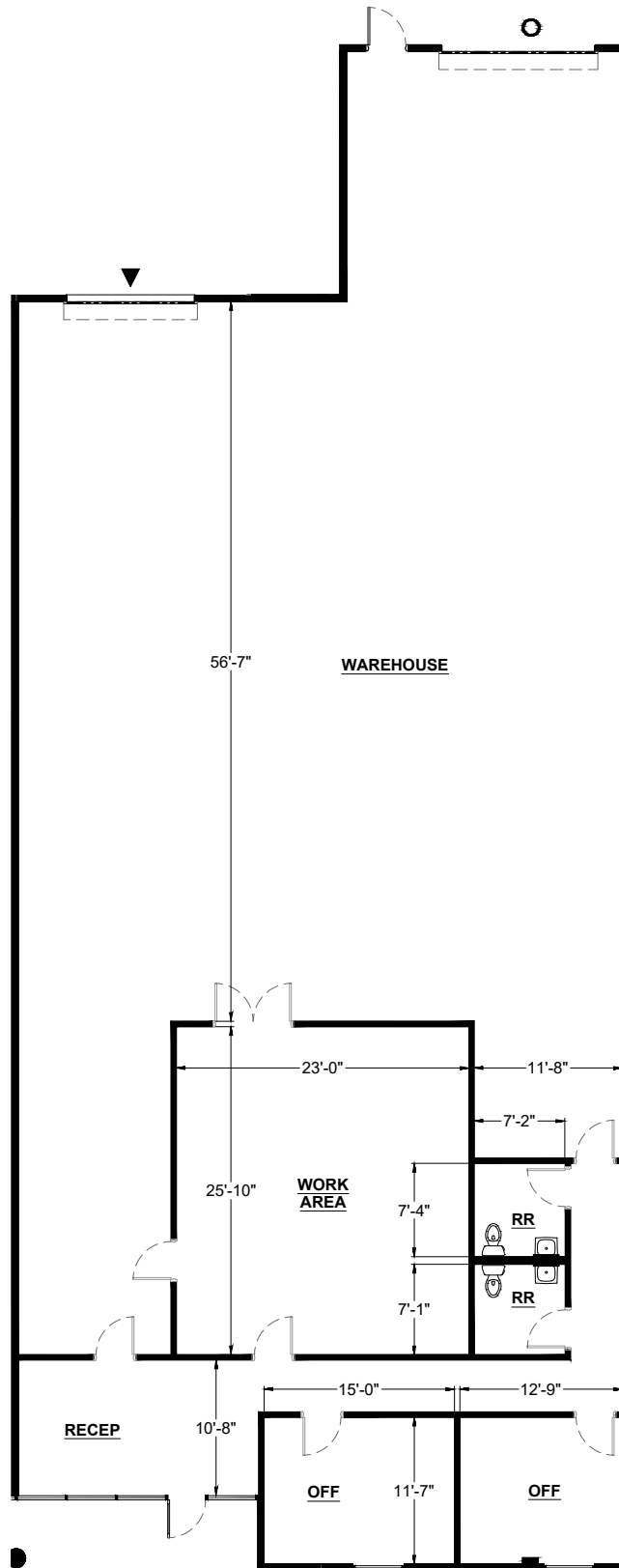
CLEAR HEIGHT 16'-6" - 18'-0"

- GRADE LEVEL DOORS 1
- ▲ DOCK HIGH DOORS 1

SITE KEY PLAN:



BUILDING KEY PLAN:



Hesperian Business Park

2488 Tripaldi Way
Hayward, CA 94545

Bldg. 2438-2512

STE 2488

08/06/25