

PLEASANT HILL INDUSTRIAL PARK

2420-2495 ESTAND WAY • PLEASANT HILL, CA 94523



- Centrally located with immediate access to I-680 and Highway 24
- Modern flex industrial suites with dock and grade loading
- High-demand submarket with low vacancy and long-term rent stability

Property Summary

AVAILABLE SF	5,280-6,000 SF
BUILDING SIZE	103,910 SF
RENOVATED	2025
MARKET	Oakland / East Bay

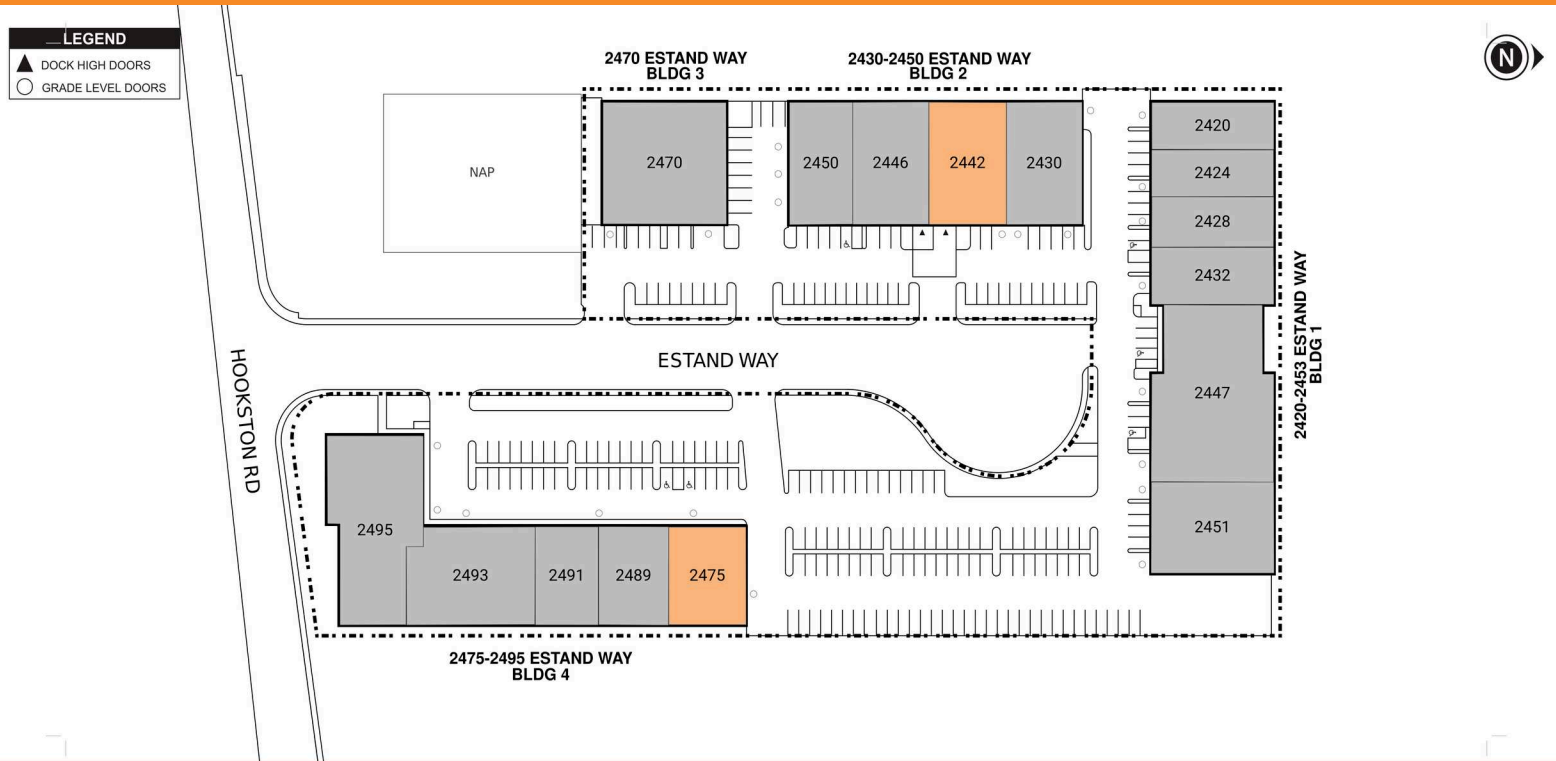
For more information, please contact:

COLBY MIKULICH
LEASING MANAGER
P. 510-370-2864
E. CMIKULICH@BKMMGMT.COM

KRIS HAGAR
LEASING AGENT
CUSHMAN & WAKEFIELD
P. 925 627 2497
E. KRIS.HAGAR@CUSHWAKE.COM

PLEASANT HILL INDUSTRIAL PARK

2420-2495 ESTAND WAY • PLEASANT HILL, CA 94523



■ AVAILABLE ■ OCCUPIED

Current Availabilities

BUILDING	SUITE	TOTAL SIZE	OFFICE SIZE	OFFICE %	TYPE	CLEAR HT	GL	DL
2430-2450	2442	6,000	0	0	IND	0	0	
2475-2495	2475	5,280	0	0	IND	0	0	

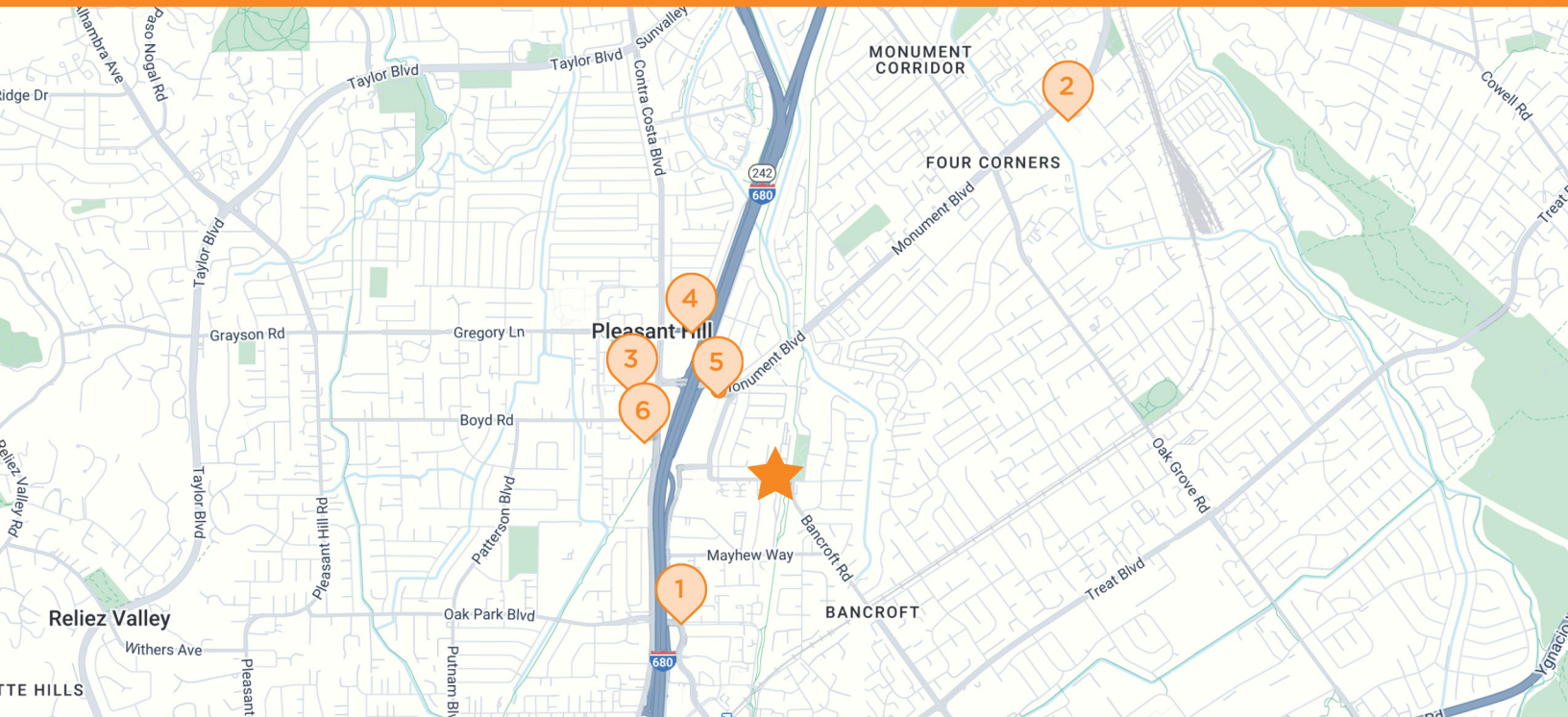
PLEASANT HILL INDUSTRIAL PARK

2420-2495 ESTAND WAY • PLEASANT HILL, CA 94523



PLEASANT HILL INDUSTRIAL PARK

2420-2495 ESTAND WAY • PLEASANT HILL, CA 94523




 **PLEASANT HILL INDUSTRIAL PARK**
2420-2495 Estand Way, Pleasant Hill, CA 94523

 **CHEVRON**
3210 Buskirk Ave
Pleasant Hill, CA

 **COSTCO**
2400 Monument Blvd
Concord, CA

 **PEET'S COFFEE**
65 Crescent Dr Suite A
Pleasant Hill, CA

 **SAFeway**
1978 Contra Costa Blvd
Pleasant Hill, CA

 **WELLS FARGO**
2380 Monument Blvd Suite G
Pleasant Hill, CA

 **HYATT HOUSE**
2611 Contra Costa Blvd
Pleasant Hill, CA