

# PLEASANT HILL INDUSTRIAL PARK

2420-2495 ESTAND WAY • PLEASANT HILL, CA 94523



- Centrally located with immediate access to I-680 and Highway 24
- Modern flex industrial suites with dock and grade loading
- High-demand submarket with low vacancy and long-term rent stability

## Property Summary

AVAILABLE SF	5,280-12,170 SF
BUILDING SIZE	103,910 SF
RENOVATED	2025
MARKET	Oakland / East Bay

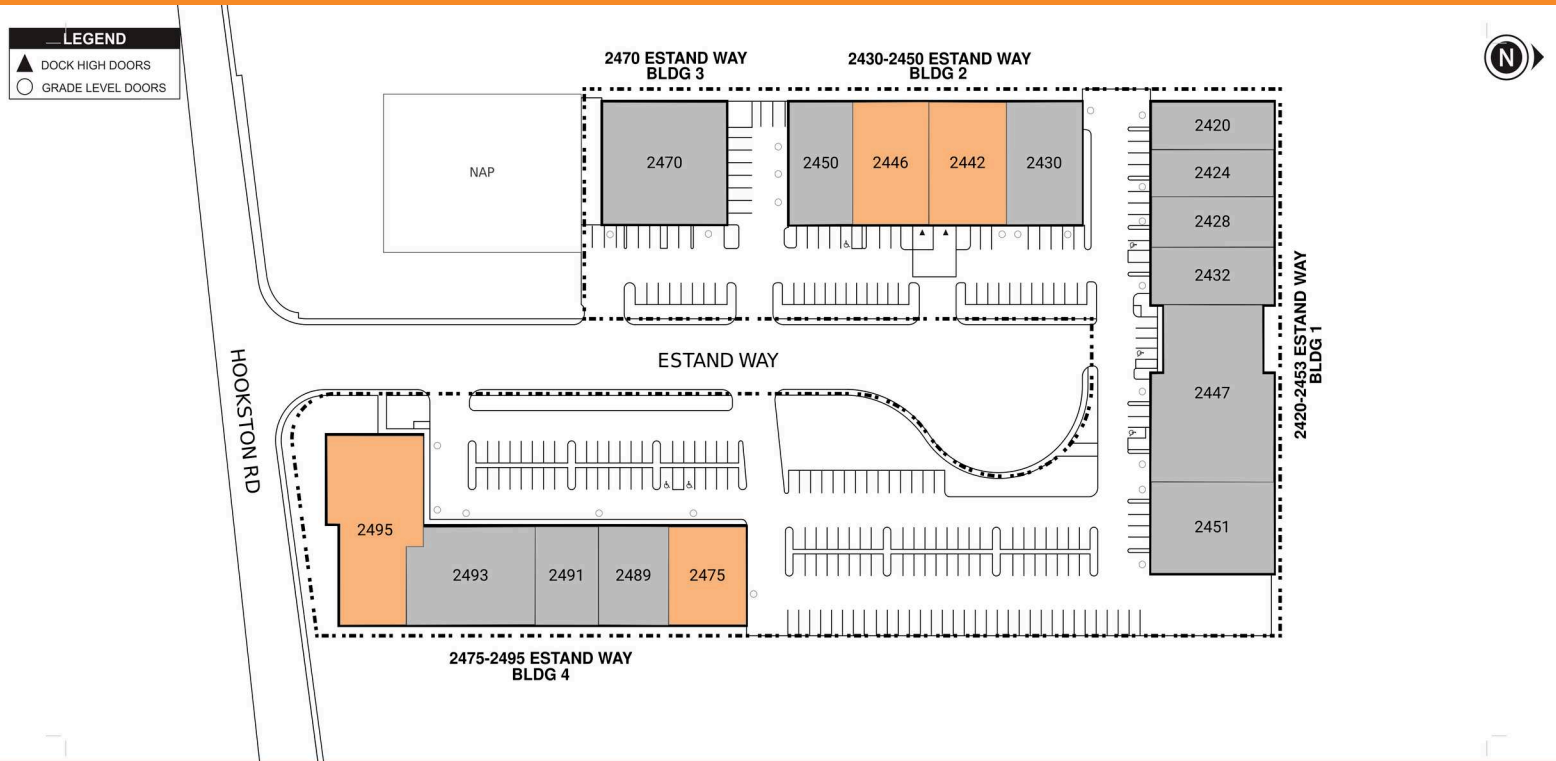
For more information, please contact:

**COLBY MIKULICH**  
LEASING MANAGER  
P. 510.370.2864  
E. CMIKULICH@BKMMGMT.COM

**KRIS HAGAR**  
LEASING AGENT  
CUSHMAN & WAKEFIELD  
P. 925 627 2497  
E. KRIS.HAGAR@CUSHWAKE.COM

# PLEASANT HILL INDUSTRIAL PARK

2420-2495 ESTAND WAY • PLEASANT HILL, CA 94523



■ AVAILABLE ■ OCCUPIED

## Current Availabilities

BUILDING	SUITE	TOTAL SIZE	OFFICE SIZE	OFFICE %	TYPE	CLEAR HT	GL	DL
2430-2450	2442	6,000	0	0	IND	0	0	
2430-2450	2446	6,000	0	0	IND	0	0	
2475-2495	2475	5,280	0	0	IND	0	0	
2475-2495	2495	12,170	0	0	IND	0	0	

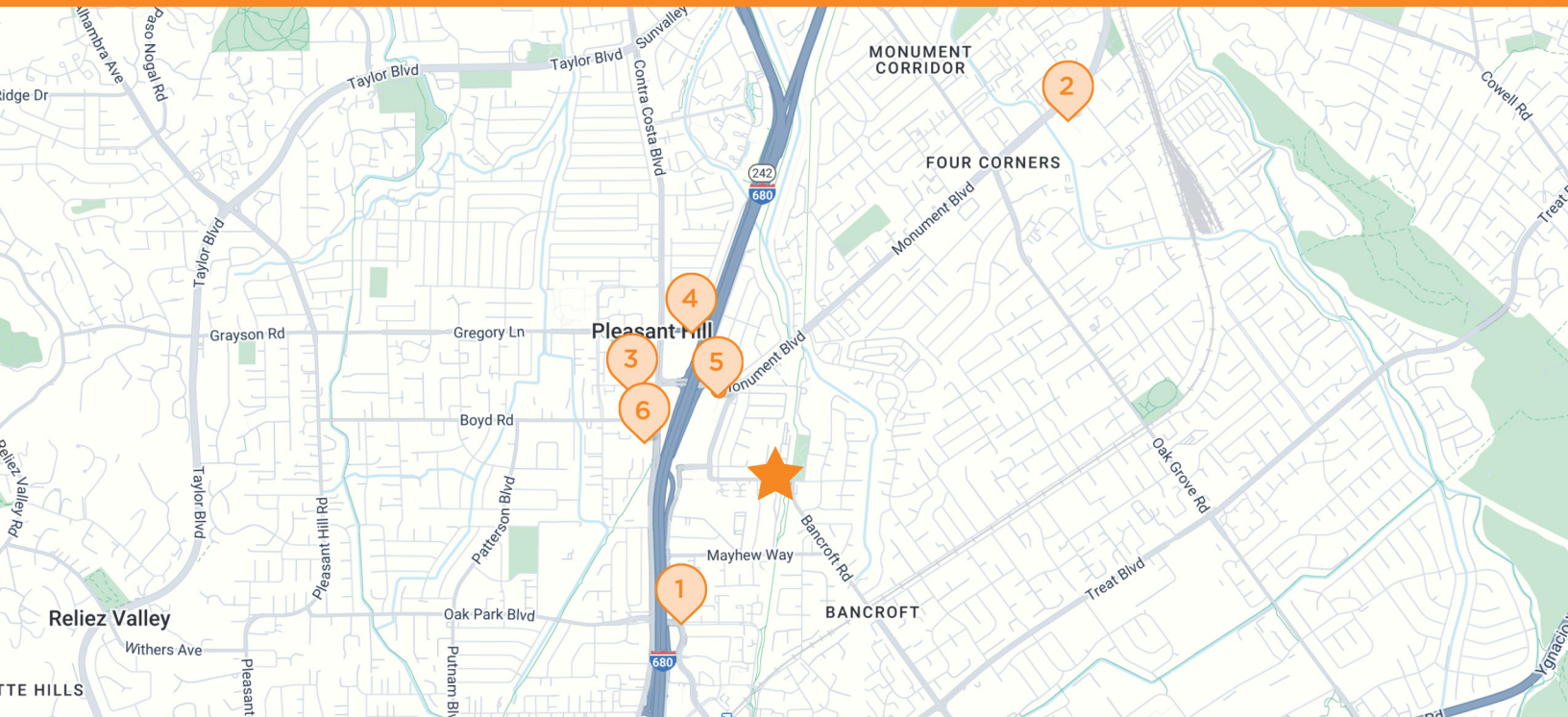
# PLEASANT HILL INDUSTRIAL PARK

2420-2495 ESTAND WAY • PLEASANT HILL, CA 94523



# PLEASANT HILL INDUSTRIAL PARK

2420-2495 ESTAND WAY • PLEASANT HILL, CA 94523



 **PLEASANT HILL INDUSTRIAL PARK**  
2420-2495 Estand Way, Pleasant Hill, CA 94523

 **CHEVRON**  
3210 Buskirk Ave  
Pleasant Hill, CA

 **COSTCO**  
2400 Monument Blvd  
Concord, CA

 **PEET'S COFFEE**  
65 Crescent Dr Suite A  
Pleasant Hill, CA

 **SAFeway**  
1978 Contra Costa Blvd  
Pleasant Hill, CA

 **WELLS FARGO**  
2380 Monument Blvd Suite G  
Pleasant Hill, CA

 **HYATT HOUSE**  
2611 Contra Costa Blvd  
Pleasant Hill, CA