

# RUBICON BUSINESS CENTER

1600 & 1800 WILSON WAY • SMYRNA, GA 30082



- Infill location less than 2 miles from I-285
- 16' clear height
- Dock-high and grade-level loading
- Fully sprinklered

## Property Summary

<b>AVAILABLE SF</b>	4,700-9,638 SF
<b>BUILDING SIZE</b>	110,492 SF
<b>MARKET</b>	Atlanta

**For more information, please contact:**

**ADAM MURRAY**  
SENIOR LEASING MANAGER  
BKM MANAGEMENT  
P. 702.359.4858  
E. [AMURRAY@BKMMGMT.COM](mailto:AMURRAY@BKMMGMT.COM)

# RUBICON BUSINESS CENTER

1600 & 1800 WILSON WAY • SMYRNA, GA 30082



**LEGEND**

- ▲ DOCK HIGH DOORS
- GRADE LEVEL DOORS



■ AVAILABLE ■ OCCUPIED

## Current Availabilities

BUILDING	SUITE	TOTAL SIZE	OFFICE SIZE	OFFICE %	TYPE	CLEAR HT	GL	DL
1800	1802	9,638	2,233	23	IND	1	2	
1800	1807	5,425	2,845	25	IND	0	4	
1800	1809	4,700	737	16	IND	0	2	

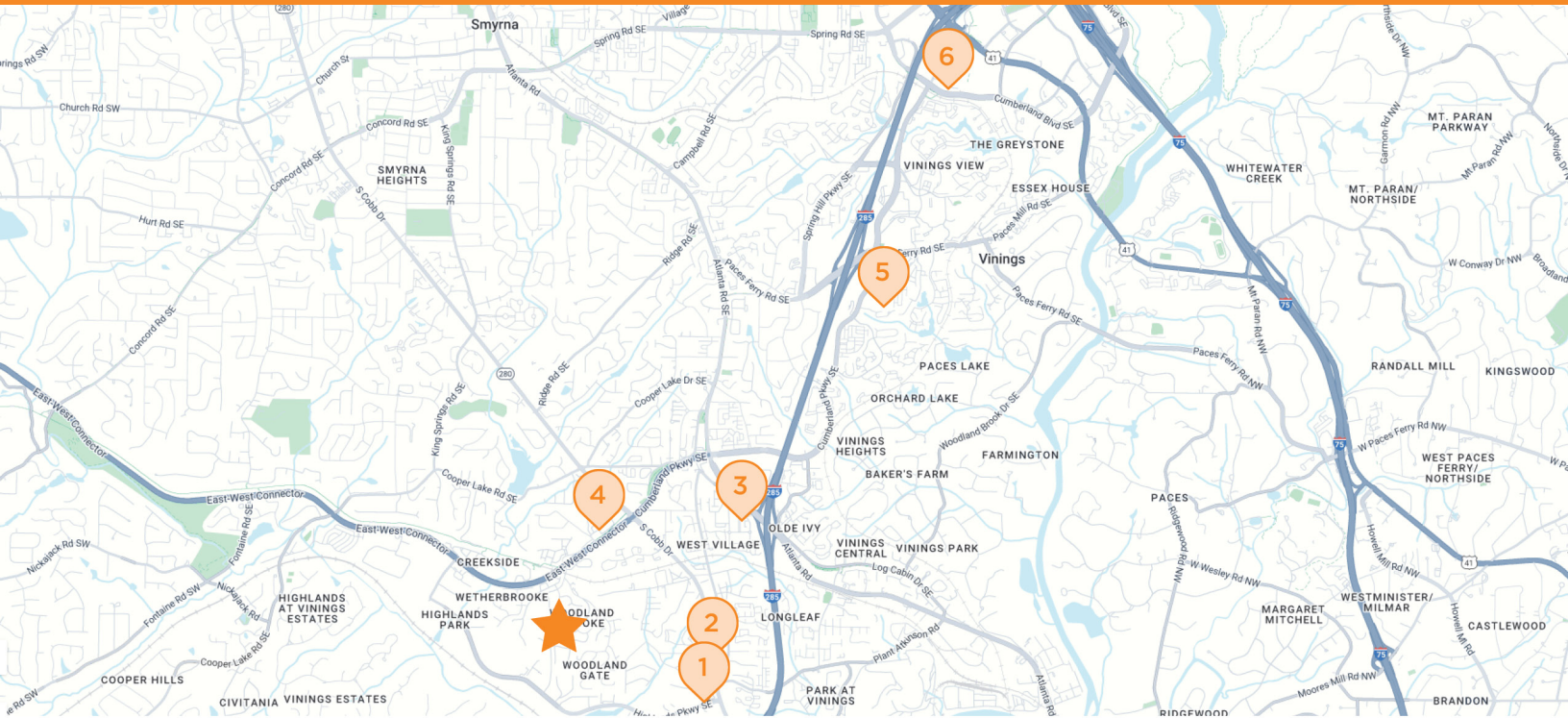
# RUBICON BUSINESS CENTER

1600 & 1800 WILSON WAY • SMYRNA, GA 30082



# RUBICON BUSINESS CENTER

1600 & 1800 WILSON WAY • SMYRNA, GA 30082



## RUBICON BUSINESS CENTER

1600 & 1800 Wilson Way, Smyrna, GA 30082



### COMFORT INN

2800 Highlands Pkwy SE  
Smyrna, GA



### DUNKIN'

4928 S Cobb Dr SE  
Smyrna, GA



### STARBUCKS

4515 W Village Way  
Smyrna, GA



### PUBLIX SUPER MARKET

4480 S Cobb Dr SE  
Smyrna, GA



### HOME DEPOT

2450 Cumberland Pkwy SE  
Atlanta, GA



### COSTCO

2900 Cumberland Mall  
Atlanta, GA