

COBB LANDING

1610 & 1620 COBB INTERNATIONAL • KENNESAW, GA 30152



- Only 0.1 miles from Cobb Parkway and 2.6 miles from I-75
- Functional layout with efficient loading
- 20' clear height
- Ample parking
- LED lighting throughout

Property Summary

AVAILABLE SF	3,500-3,500 SF
BUILDING SIZE	52,280 SF
RENOVATED	2026
MARKET	Atlanta

For more information, please contact:

ADAM MURRAY
LEASING MANAGER
BKM MANAGEMENT
P. 702.359.4858
E. AMURRAY@BKMMGMT.COM

COBB LANDING

1610 & 1620 COBB INTERNATIONAL • KENNESAW, GA 30152



LEGEND

- ▲ DOCK HIGH DOORS
- GRADE LEVEL DOORS



■ AVAILABLE ■ OCCUPIED

Current Availabilities

BUILDING	SUITE	TOTAL SIZE	OFFICE SIZE	OFFICE %	TYPE	CLEAR HT	GL	DL
1620	1620_C4	3,500	817	23	IND	0	1	

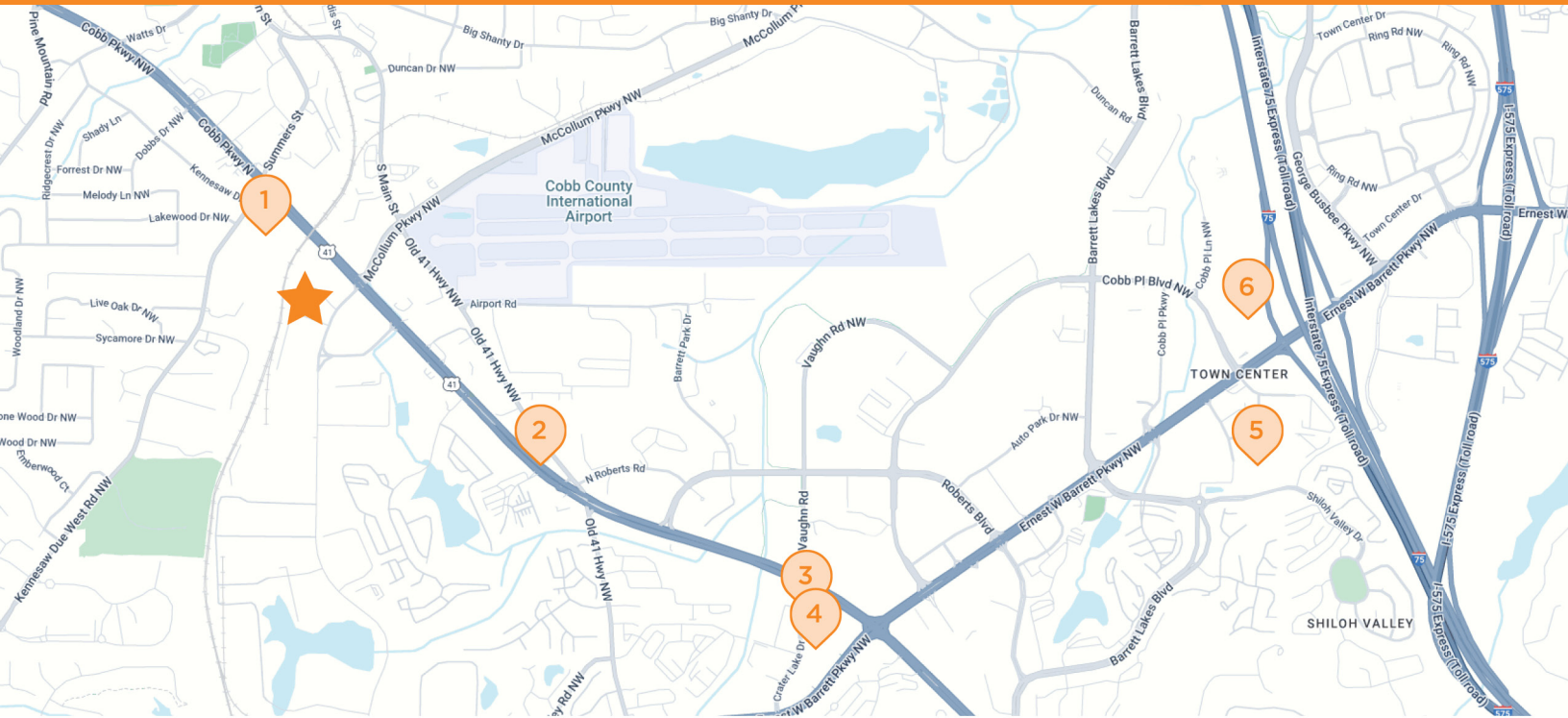
COBB LANDING


1610 & 1620 COBB INTERNATIONAL • KENNESAW, GA 30152



COBB LANDING

1610 & 1620 COBB INTERNATIONAL • KENNESAW, GA 30152



 **COBB LANDING**

1610, 1620 Cobb International Blvd, Kennesaw, GA 30152

1 DUNKIN'
2462 Kennesaw Due West Rd
NW
Kennesaw, GA

2 SHELL
2145 Cobb Pkwy NW
Kennesaw, GA

3 STARBUCKS
1955 Cobb Pkwy NW
Kennesaw, GA

4 WHOLE FOODS MARKET
1300 Ernest W Barrett Pkwy
NW
Kennesaw, GA

5 COSTCO
645 Ernest W Barrett Pkwy
NW
Kennesaw, GA

6 ALDI
860 Cobb PI Blvd NW Suite
400
Kennesaw, GA