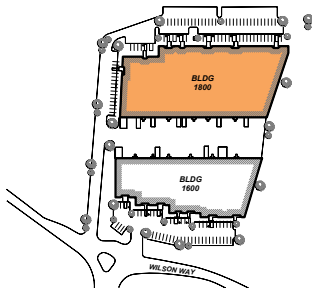


SUITE DATA:

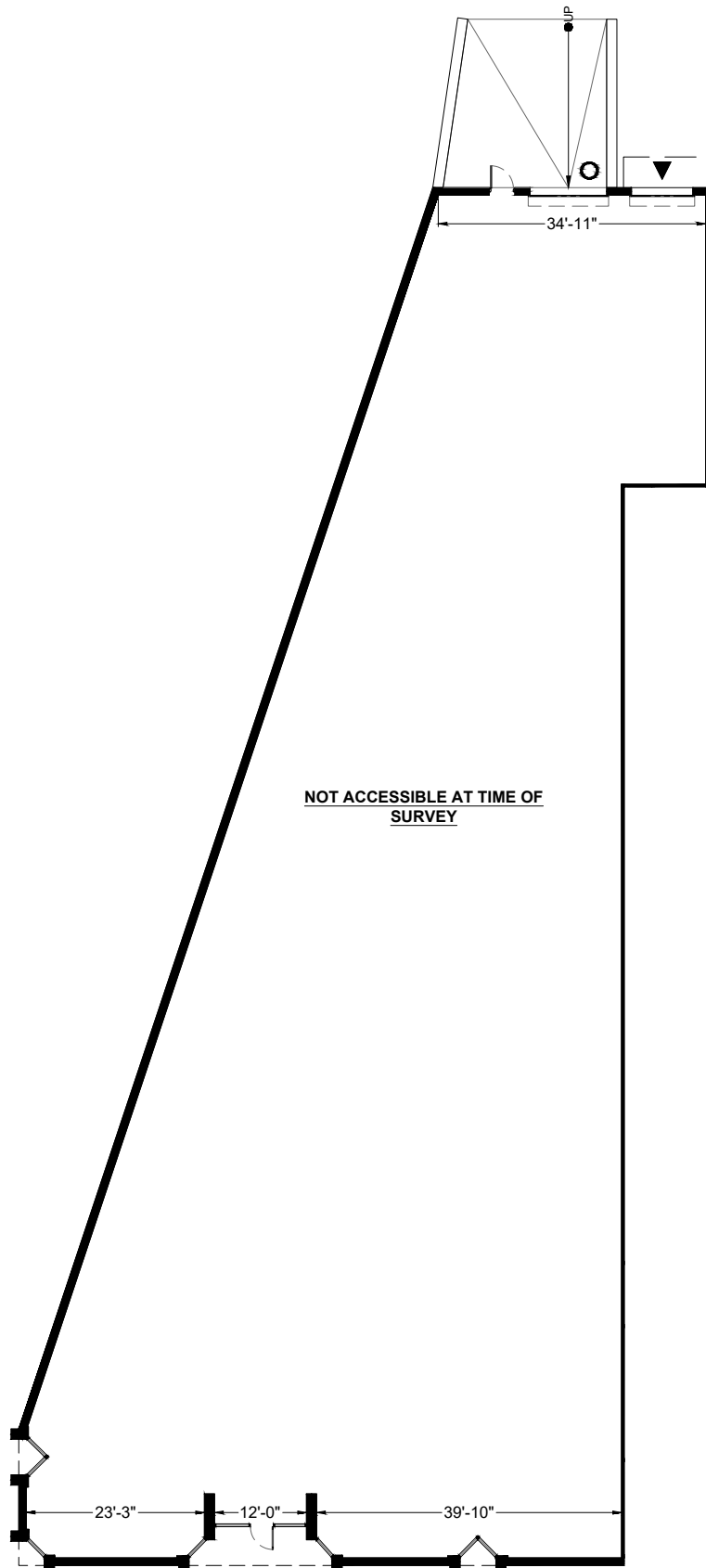
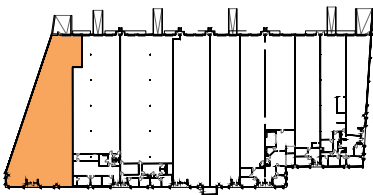
OFFICE 10,290 SF
TOTAL 10,290 SF

○ GRADE LEVEL DOORS 1
▲ DOCK HIGH DOORS 1

SITE KEY PLAN:



BUILDING KEY PLAN:



Rubicon Business Center

1811 Wilson Way
Smyrna, GA 30082

Bldg. 1811
STE 1801

02/10/26