

EDEN LANDING INDUSTRIAL PARK II

26235-26269 RESEARCH RD • HAYWARD, CA 94545



- Multi-tenant industrial park offering flexible warehouse layouts
- Grade-level loading and on-site parking
- Strategic East Bay location with access to I-880 and major regional corridors

Property Summary

AVAILABLE SF	SF
BUILDING SIZE	82,796 SF
RENOVATED	2022
MARKET	East Bay

For more information, please contact:

JANET YIN

LEASING MANAGER
BKM MANAGEMENT COMPANY
P. 669.306.6074
E. JYIN@BKMMGMT.COM

COLBY MIKULICH

LEASING MANAGER
P. 510.370.2864
E. CMIKULICH@BKMMGMT.COM

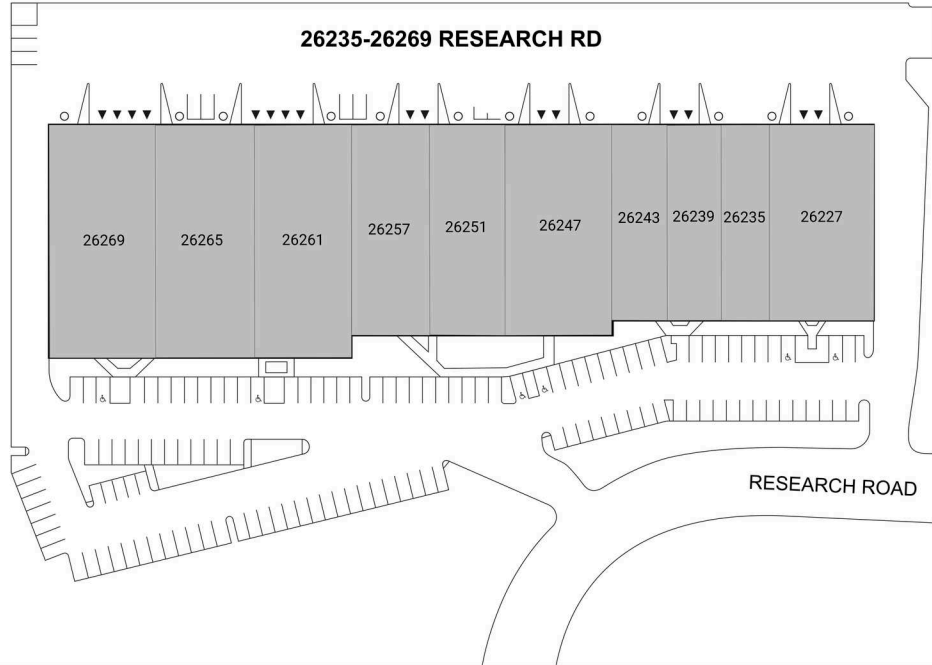
EDEN LANDING INDUSTRIAL PARK II

26235-26269 RESEARCH RD • HAYWARD, CA 94545



LEGEND

- ▲ DOCK HIGH DOORS
- GRADE LEVEL DOORS



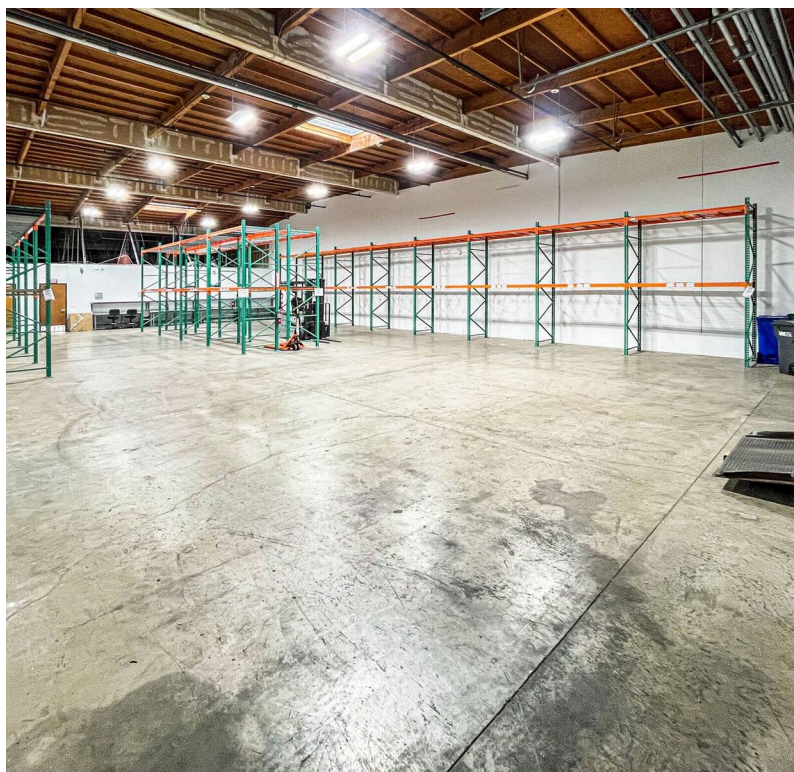
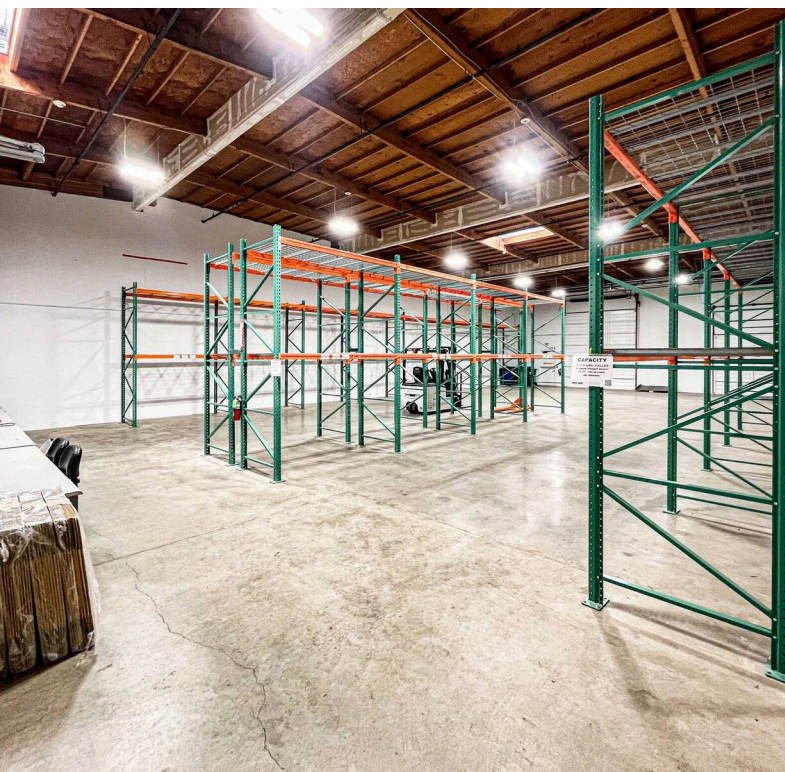
■ AVAILABLE ■ OCCUPIED

Current Availabilities

BUILDING	SUITE	TOTAL SIZE	OFFICE SIZE	OFFICE %	TYPE	CLEAR HT	GL	DL
----------	-------	------------	-------------	----------	------	----------	----	----

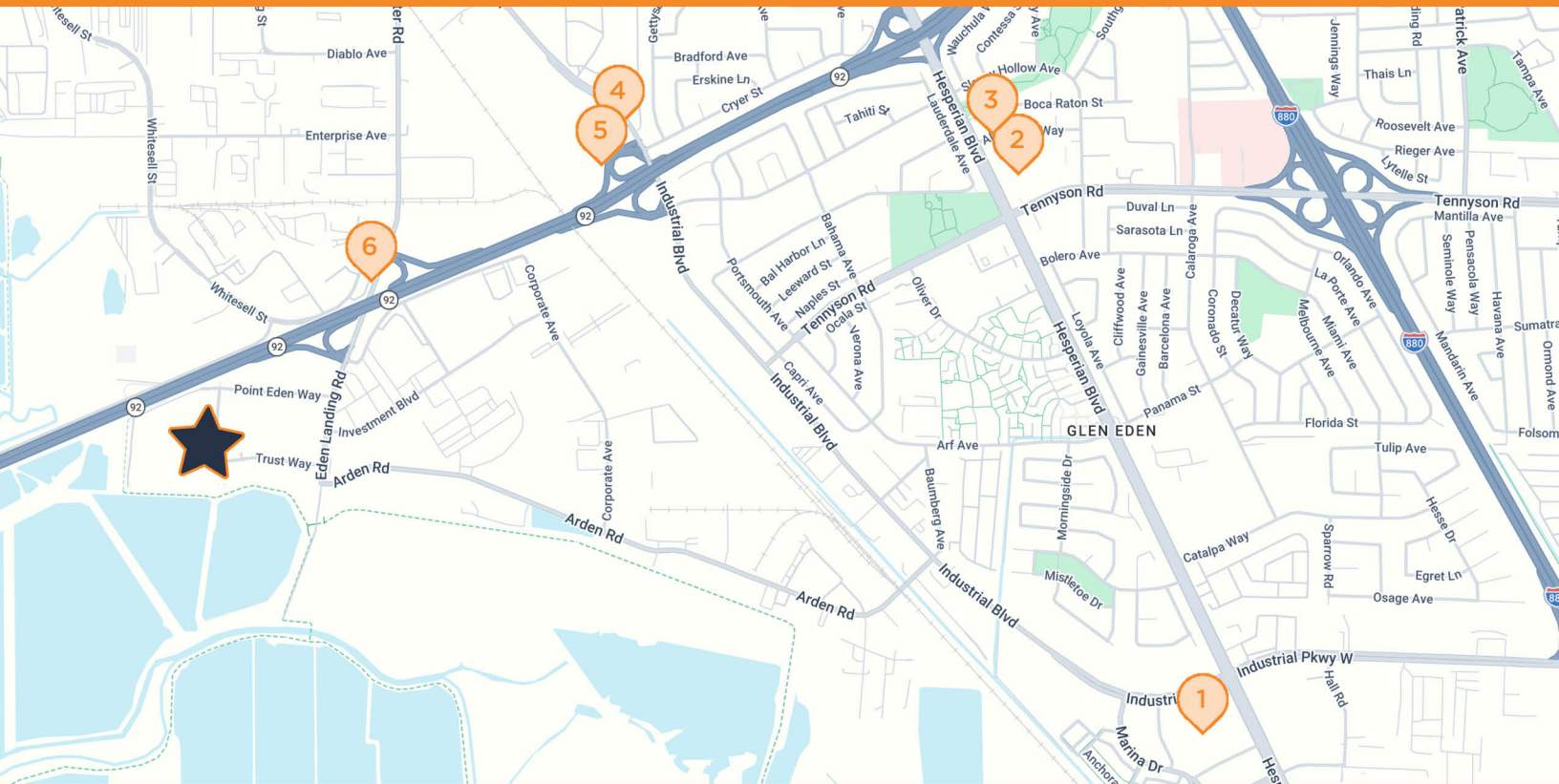
EDEN LANDING INDUSTRIAL PARK II

26235-26269 RESEARCH RD • HAYWARD, CA 94545



EDEN LANDING INDUSTRIAL PARK II

26235-26269 RESEARCH RD • HAYWARD, CA 94545



EDEN LANDING INDUSTRIAL PARK II

26235-26269 Research Rd, Hayward, CA 94545

- | | | | |
|----------|--|----------|--|
| 1 | COSTCO
28505 Hesperian Blvd, Hayward, CA | 4 | STARBUCKS
25945 Industrial Blvd, Hayward, CA |
| 2 | SUBWAY
27088 Hesperian Blvd, Hayward, CA | 5 | FAIRFIELD BY MARRIOTT INN
25921 Industrial Blvd, Hayward, CA |
| 3 | 7 ELEVEN
2175 Aldengate Way, Hayward, CA | 6 | 76 GAS STATION
3500 Breakwater Ave, Hayward, CA |