

CARSON COMMERCE CENTER

20620 S. LEAPWOOD AVE • CARSON, CA 90746



- Industrial property located near the Ports of Los Angeles and Long Beach
- Warehouse suites with grade-level loading and functional layouts
- Strategic access to major freight corridors and regional logistics infrastructure

Property Summary

AVAILABLE SF	1,619-3,088 SF
BUILDING SIZE	77,255 SF
RENOVATED	2022
MARKET	Los Angeles

For more information, please contact:

CHARLES STERN
LEASING MANAGER
BKM MANAGEMENT COMPANY
P. 561.419.3719
E. CSTERN@BKMMGMT.COM

CARSON COMMERCE CENTER

20620 S. LEAPWOOD AVE • CARSON, CA 90746



LEGEND	
▲	DOCK HIGH DOORS
○	GRADE LEVEL DOORS



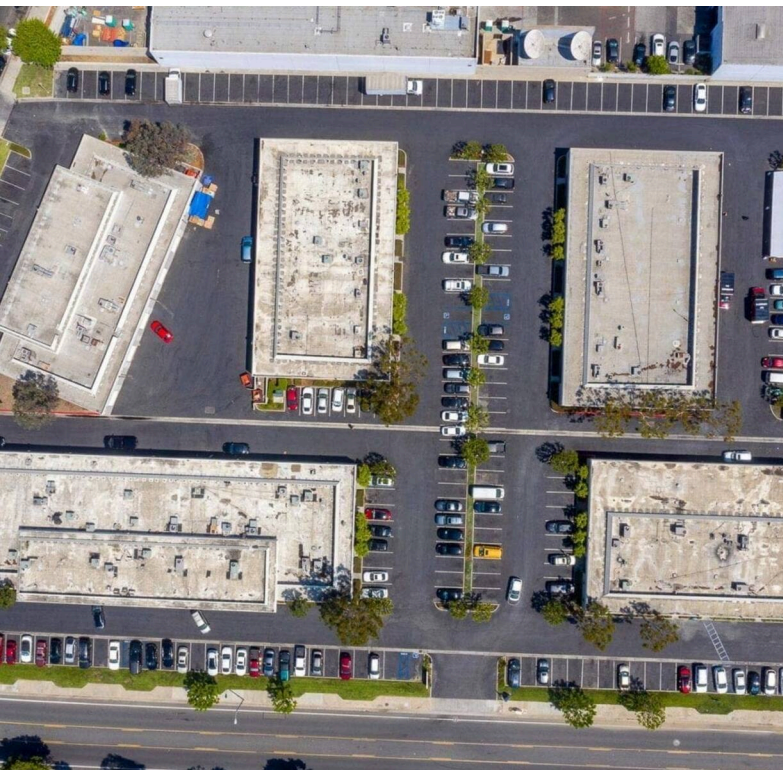
■ AVAILABLE ■ OCCUPIED

Current Availabilities

BUILDING	SUITE	TOTAL SIZE	OFFICE SIZE	OFFICE %	TYPE	CLEAR HT	GL	DL
200	200A	1,789	0	0	N/A	N/A	N/A	
200	200G	3,088	0	0	N/A	N/A	N/A	
300	300B	1,619	0	0	N/A	N/A	N/A	

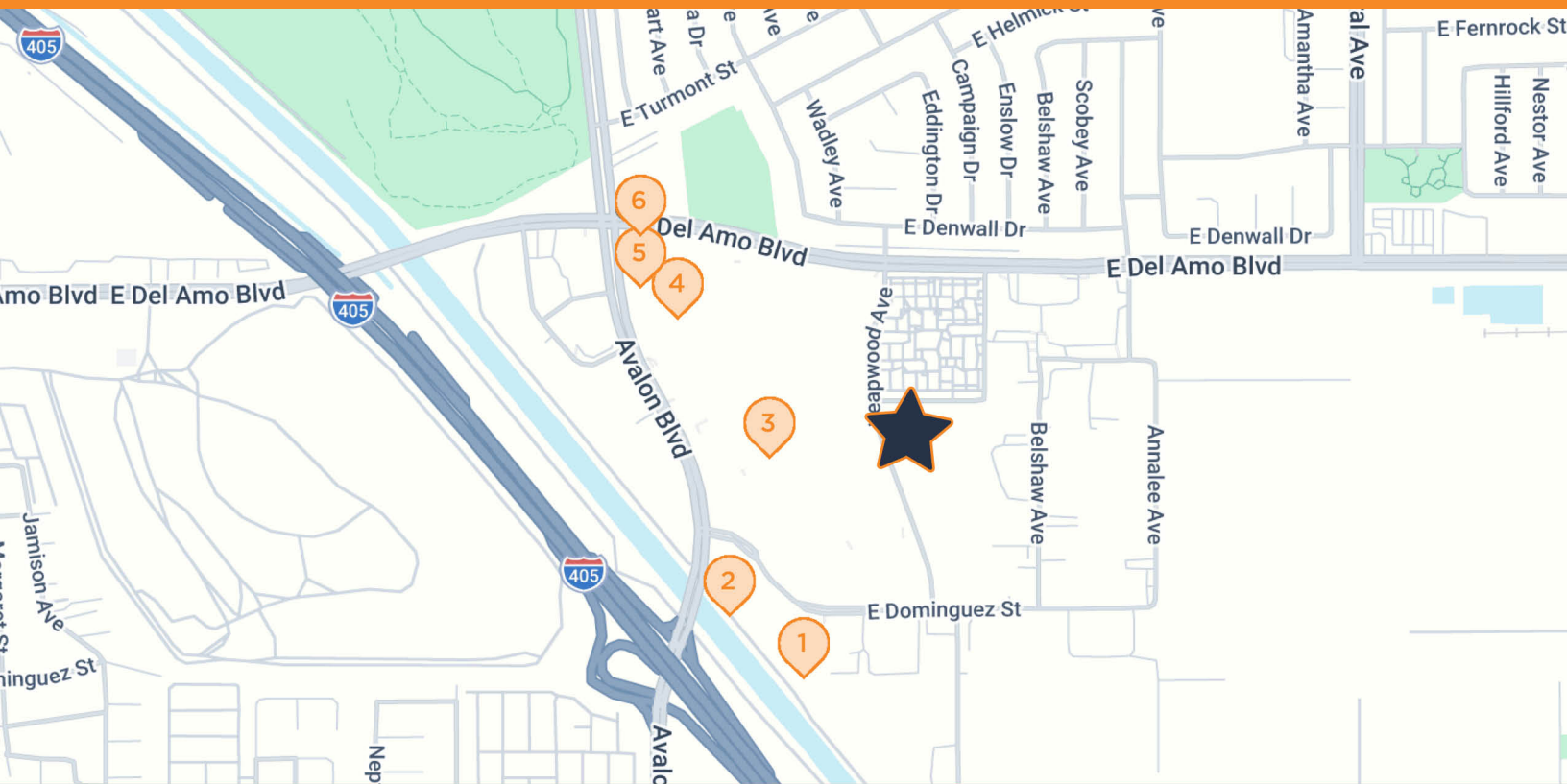
CARSON COMMERCE CENTER

20620 S. LEAPWOOD AVE • CARSON, CA 90746



CARSON COMMERCE CENTER

20620 S. LEAPWOOD AVE • CARSON, CA 90746



CARSON COMMERCE CENTER

20620 S. Leapwood Ave, Carson, CA 90746

- | | | | |
|----------|---|----------|---|
| 1 | MOTEL 6
888 E Dominguez St, Carson, CA | 4 | CHIPOTLE
20420 Avalon Blvd A, Carson, CA |
| 2 | FEDEX PRINT & SHIP CENTER
20820 S Avalon Blvd B, Carson, CA | 5 | CHEVRON
20320 Avalon Blvd, Carson, CA |
| 3 | TARGET
20700 S Avalon Blvd, Carson, CA | 6 | STARBUCKS
20240 S Avalon Blvd, Carson, CA |