

# PLEASANT HILL INDUSTRIAL PARK

2420-2495 Estand Way Pleasant Hill, CA 94523



Available SF  
**5,280-6,000 SF**

Renovated  
**2025**

Clear Height  
-

Location  
**PLEASANT HILL,  
CA**



- Centrally located with immediate access to I-680 and Highway 24
- Modern flex industrial suites with dock and grade loading
- High-demand submarket with low vacancy and long-term rent stability

## FOR MORE INFORMATION

### Colby Mikulich

Leasing Manager

P. 510.370.2864

E. [CMIKULICH@BKMMGMT.COM](mailto:CMIKULICH@BKMMGMT.COM)

### Kris Hagar

Leasing Agent

Cushman & Wakefield

P. 925 627 2497

E. [KRIS.HAGAR@CUSHWAKE.COM](mailto:KRIS.HAGAR@CUSHWAKE.COM)

### Tyler Epting

Leasing Agent

Cushman & Wakefield

P. 925 627 2897

E. [TYLER.EPTING@CUSHWAKE.COM](mailto:TYLER.EPTING@CUSHWAKE.COM)

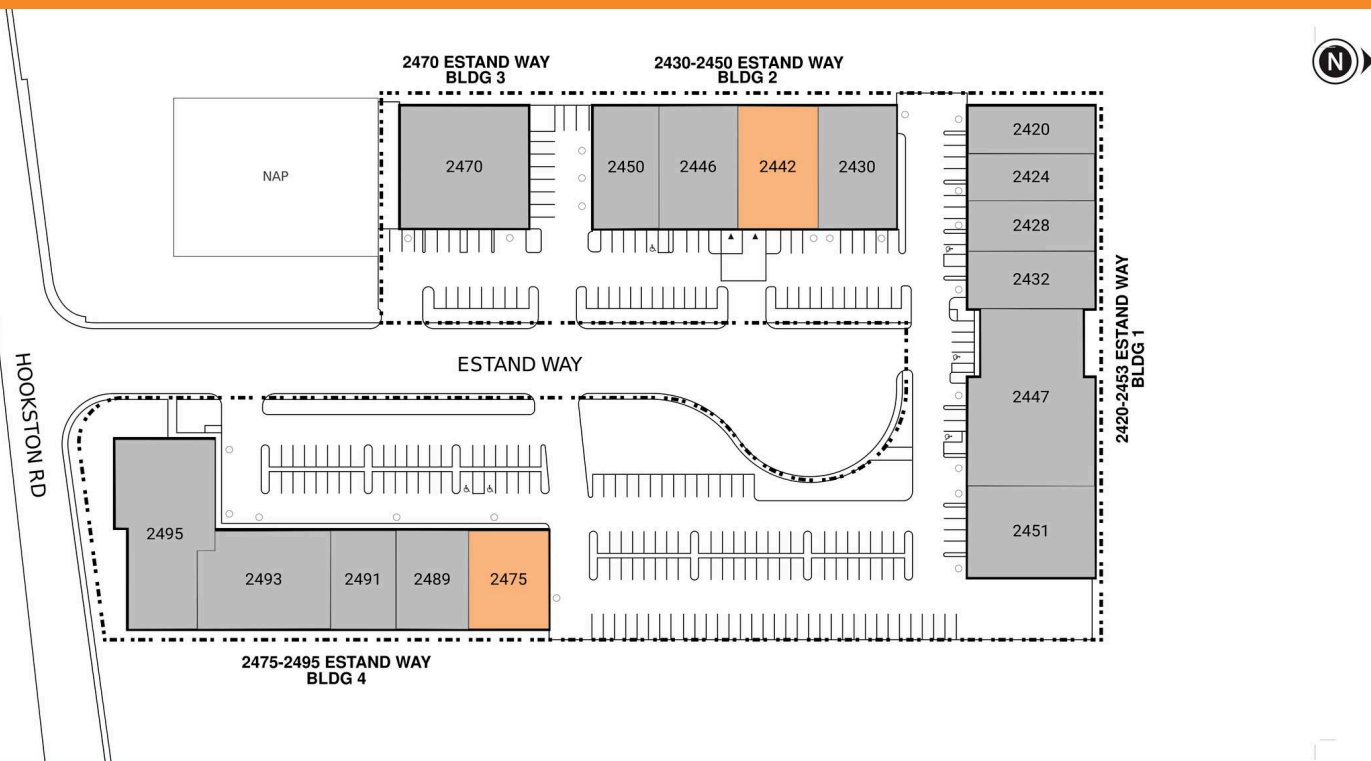
# PLEASANT HILL INDUSTRIAL PARK

2420-2495 Estand Way Pleasant Hill, CA 94523



**LEGEND**

- ▲ DOCK HIGH DOORS
- GRADE LEVEL DOORS



● AVAILABLE ● OCCUPIED

## CURRENT AVAILABILITIES

BUILDING	SUITE	TOTAL SF	OFFICE SF	OFFICE %	TYPE	CLEAR HT	GL	DL
2430-2450	2442	6,000	0	0%	IND	0	0	0
2475-2495	2475	5,280	0	0%	IND	0	0	0

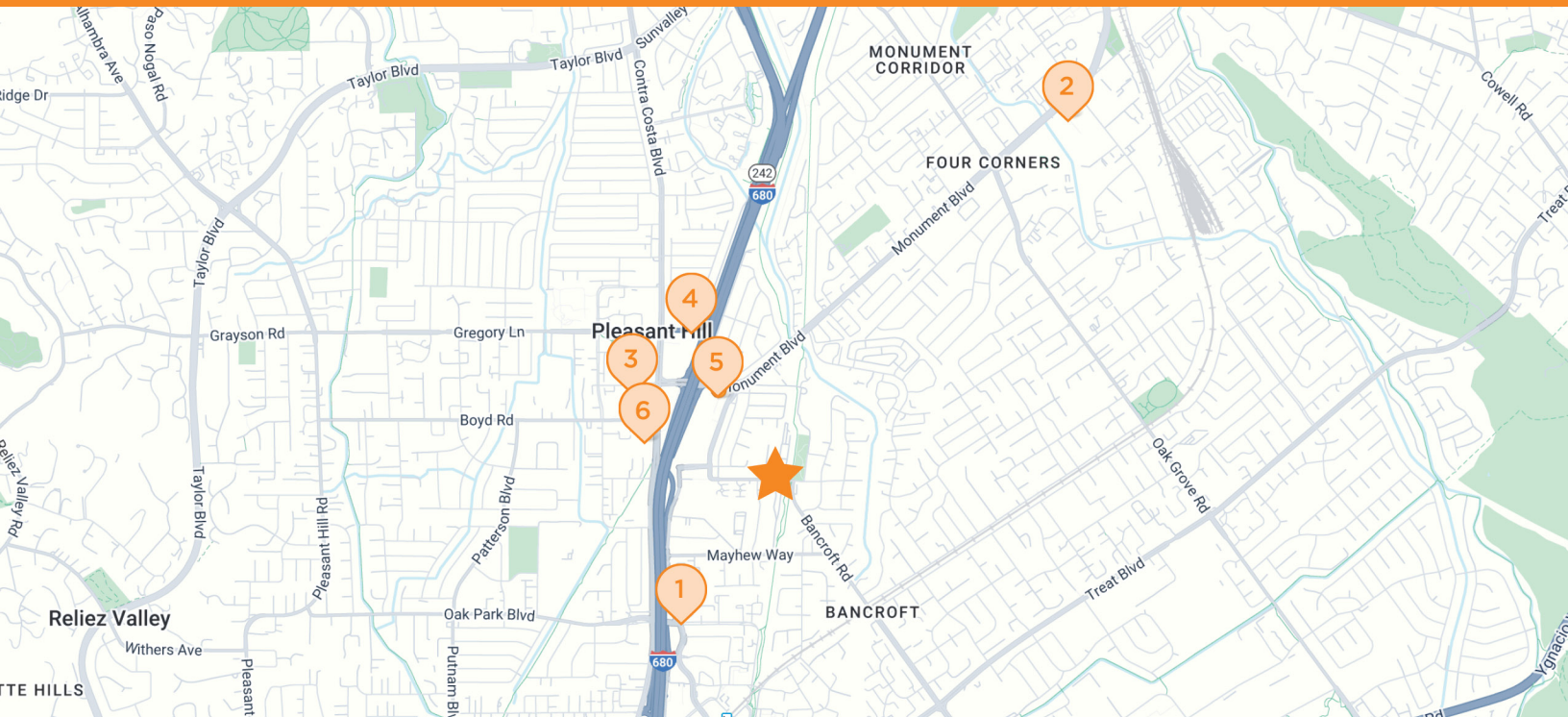
# PLEASANT HILL INDUSTRIAL PARK

2420-2495 Estand Way Pleasant Hill, CA 94523



# PLEASANT HILL INDUSTRIAL PARK

2420-2495 Estand Way Pleasant Hill, CA 94523



 **PLEASANT HILL INDUSTRIAL PARK**  
2420-2495 Estand Way, Pleasant Hill, CA 94523

 **CHEVRON**  
3210 Buskirk Ave  
Pleasant Hill, CA

 **COSTCO**  
2400 Monument Blvd  
Concord, CA

 **PEET'S COFFEE**  
65 Crescent Dr Suite A  
Pleasant Hill, CA

 **SAFeway**  
1978 Contra Costa Blvd  
Pleasant Hill, CA

 **WELLS FARGO**  
2380 Monument Blvd Suite G  
Pleasant Hill, CA

 **HYATT HOUSE**  
2611 Contra Costa Blvd  
Pleasant Hill, CA