

OLYMPIC INDUSTRIAL PARK

19111 Des Moines Memorial Dr SeaTac, WA



Available SF
17,507-17,507 SF

Renovated
2025

Clear Height
-

Location
SEATAC, WA



- Prime multi-tenant warehouse space near SeaTac International Airport
- Located in SeaTac, WA, with direct access to I-5, Highway 99, and the future SR 509 extension
- Warehouse includes 26 dock-high doors, 7 grade-level doors
- 74,327 SF light industrial warehouse space

FOR MORE INFORMATION

Niccolina Merlino

Leasing Manager

BKM Management

P. 206.487.7044

E. NMERLINO@BKMMGMT.COM

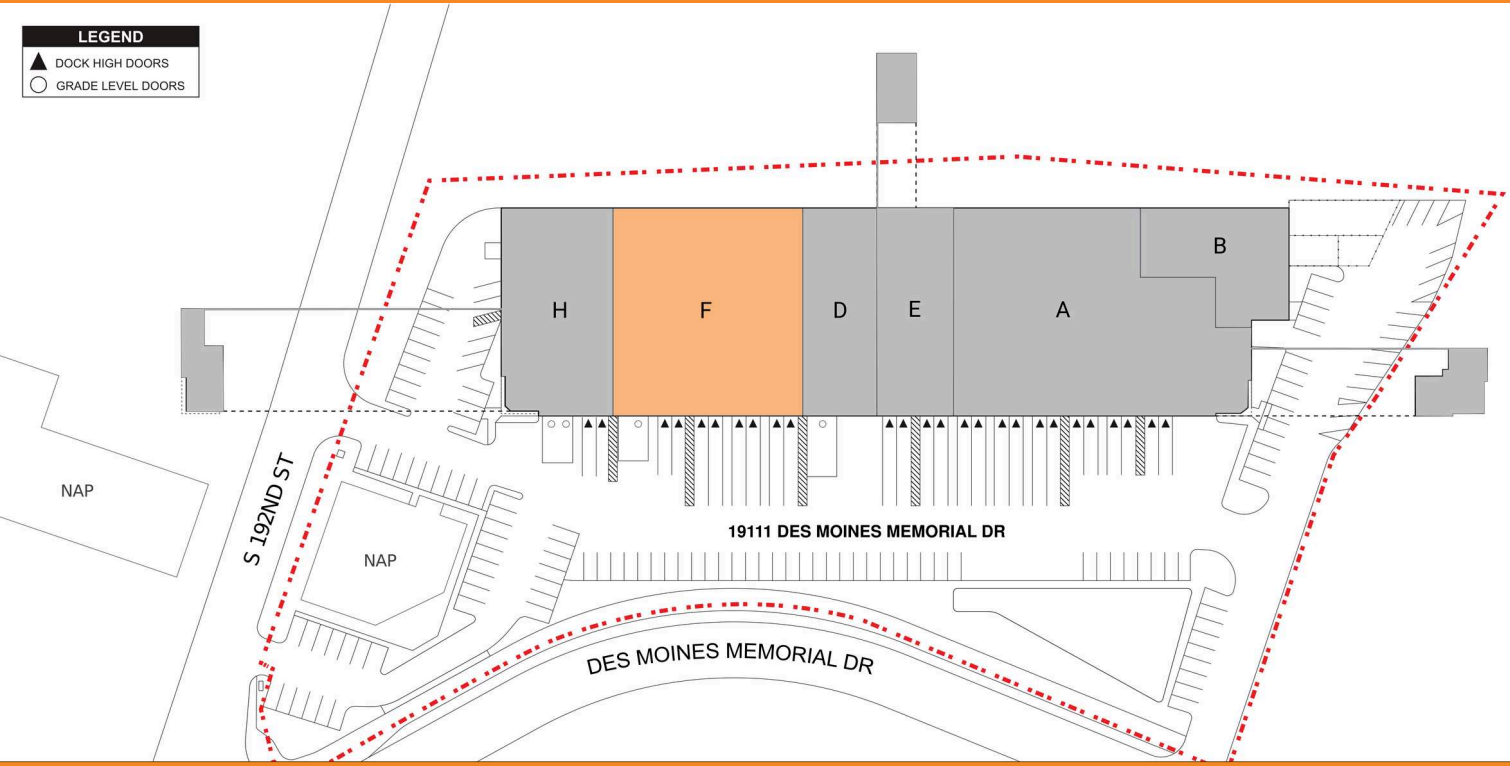
OLYMPIC INDUSTRIAL PARK

19111 Des Moines Memorial Dr SeaTac, WA



LEGEND

- ▲ DOCK HIGH DOORS
- GRADE LEVEL DOORS



● AVAILABLE ● OCCUPIED

CURRENT AVAILABILITIES

BUILDING	SUITE	TOTAL SF	OFFICE SF	OFFICE %	TYPE	CLEAR HT	GL	DL
19111	F	17,507	1,406	8%	IND	21	1	8

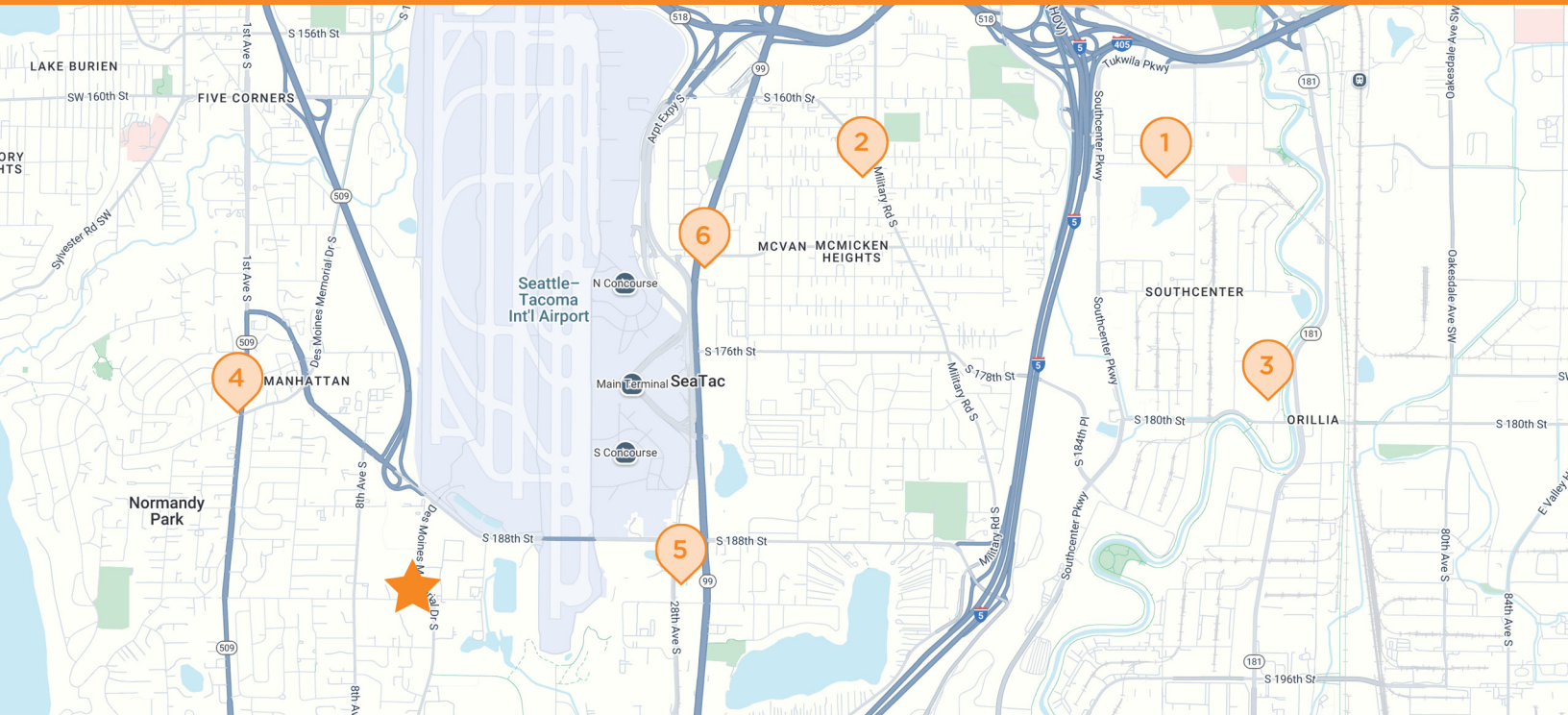
OLYMPIC INDUSTRIAL PARK

19111 Des Moines Memorial Dr SeaTac, WA





OLYMPIC INDUSTRIAL PARK

19111 Des Moines Memorial Dr SeaTac, WA




 **OLYMPIC INDUSTRIAL PARK**
19111 Des Moines Memorial Dr & 1200 S 192nd St, SeaTac, WA, 98148


 **CHASE BANK**
321 Strander Blvd
Tukwila, WA

 **SAFeway**
4011 S 164th St
Seattle, WA

 **THE HOME DEPOT**
6810 S 180th St
Tukwila, WA

 **STARBUCKS**
17827 1st Ave S
Seattle, WA

 **HAMPTON INN**
18850 28th Ave S
SeaTac, WA

 **SHELL**
17956 1st Ave S
Burien, WA