

SEATAC INDUSTRIAL PARK

18908-18940 13th Pl S SeaTac, WA 98148



Available SF
4,896-4,896 SF

Renovated
2025

Clear Height
-

Location
SEATAC, WA



- Close proximity to I-5, SR-99 and SR-509
- South of SeaTac International Airport

FOR MORE INFORMATION

Niccolina Merlino
Leasing Manager
BKM Management
P. 206.487.7044
E. [NMRLINO@BKMMGMT.COM](mailto:NMERLINO@BKMMGMT.COM)

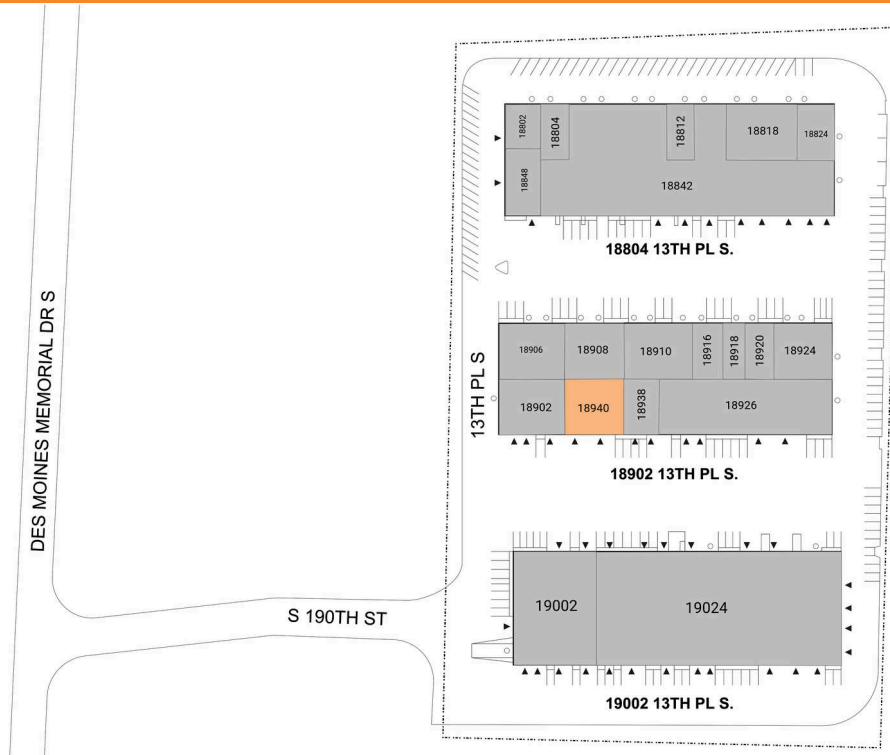
SEATAC INDUSTRIAL PARK

18908-18940 13th Pl S SeaTac, WA 98148



LEGEND

- ▲ DOCK HIGH DOORS
- GRADE LEVEL DOORS



● AVAILABLE ● OCCUPIED

CURRENT AVAILABILITIES

BUILDING	SUITE	TOTAL SF	OFFICE SF	OFFICE %	TYPE	CLEAR HT	GL	DL
2	18940	4,896	1,176	24%	IND	16	0	2

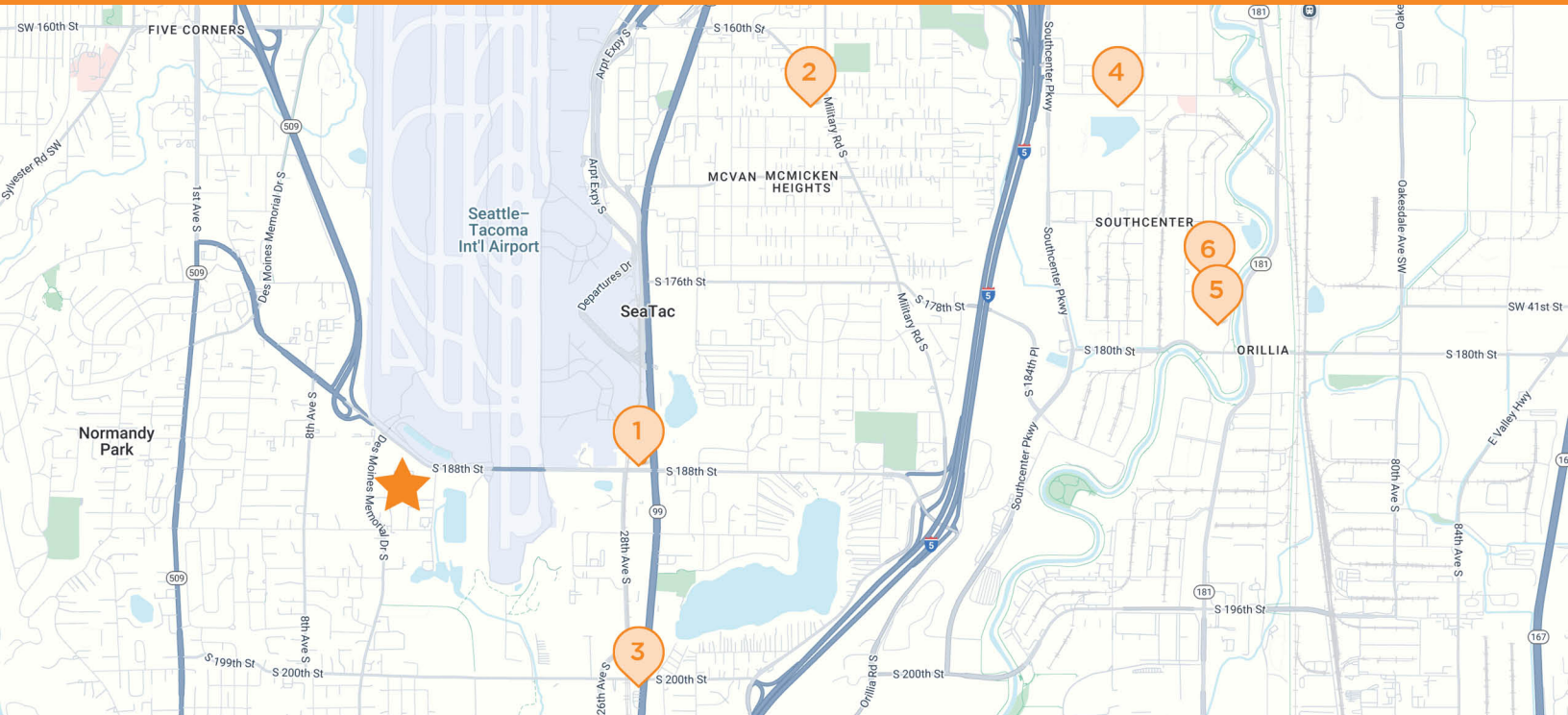
SEATAC INDUSTRIAL PARK

18908-18940 13th Pl S SeaTac, WA 98148



SEATAC INDUSTRIAL PARK

18908-18940 13th Pl S SeaTac, WA 98148



SEATAC INDUSTRIAL PARK

18908-18940 13th Pl S, SeaTac, WA 98148



LA QUINTA INN

2824 S 188th St
Seattle, WA



SAFeway

4011 S 164th St
Seattle, WA



CHEVRON

19923 Pacific Hwy S
SeaTac, WA



CHASE BANK

321 Strander Blvd
Tukwila, WA



THE HOME DEPOT

6810 S 180th St
Tukwila, WA



COSTCO

400 Costco Dr #150
Tukwila, WA