

# SEATAC INDUSTRIAL PARK

18908-18940 13th Pl S SeaTac, WA 98148



Available SF  
**4,896-4,896 SF**

Renovated  
**2025**

Clear Height  
**16'**

Location  
**SEATAC, WA**



- Close proximity to I-5, SR-99 and SR-509
- South of SeaTac International Airport

## FOR MORE INFORMATION

**Niccolina Merlino**

Leasing Manager

BKM Management

P. 206.487.7044

E. [NMERLINO@BKMMGMT.COM](mailto:NMERLINO@BKMMGMT.COM)

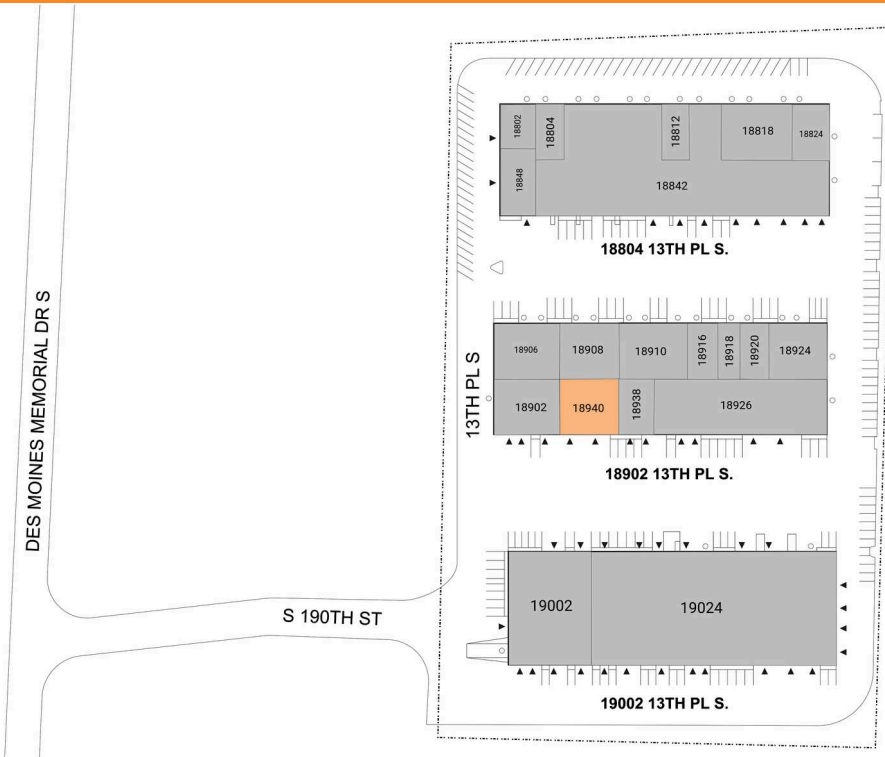
# SEATAC INDUSTRIAL PARK

18908-18940 13th Pl S SeaTac, WA 98148



**LEGEND**

- ▲ DOCK HIGH DOORS
- GRADE LEVEL DOORS



● AVAILABLE ● OCCUPIED

## CURRENT AVAILABILITIES

BUILDING	SUITE	TOTAL SF	OFFICE SF	OFFICE %	TYPE	CLEAR HT	GL	DL
2	18940	4,896	1,176	24%	IND	16	0	2

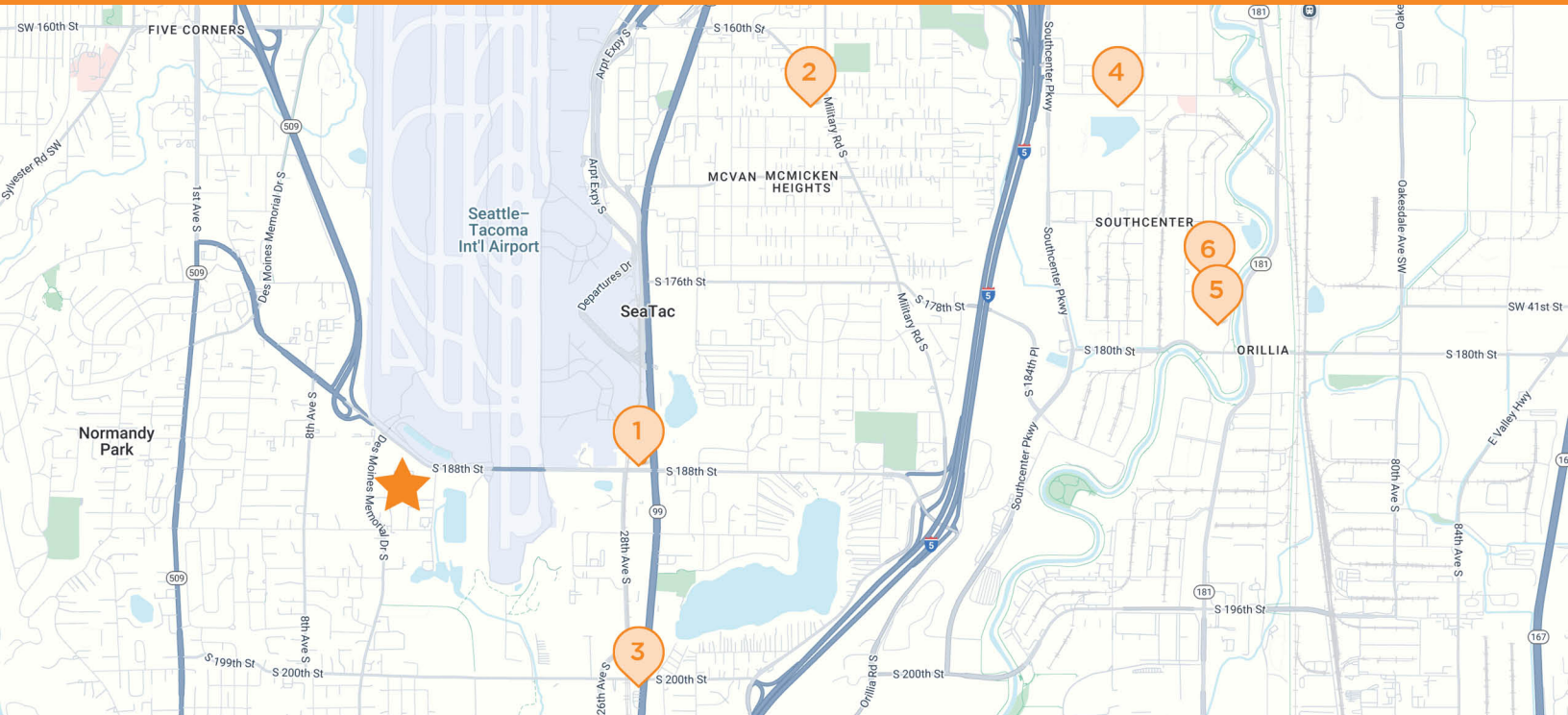
# SEATAC INDUSTRIAL PARK

18908-18940 13th Pl S SeaTac, WA 98148



# SEATAC INDUSTRIAL PARK

18908-18940 13th Pl S SeaTac, WA 98148



## SEATAC INDUSTRIAL PARK

18908-18940 13th Pl S, SeaTac, WA 98148



### LA QUINTA INN

2824 S 188th St  
Seattle, WA



### SAFeway

4011 S 164th St  
Seattle, WA



### CHEVRON

19923 Pacific Hwy S  
SeaTac, WA



### CHASE BANK

321 Strander Blvd  
Tukwila, WA



### THE HOME DEPOT

6810 S 180th St  
Tukwila, WA



### COSTCO

400 Costco Dr #150  
Tukwila, WA