

# WEST VALLEY BUSINESS PARK

19226 66th Avenue Kent, WA 98032



Available SF  
**505-1,819 SF**

Renovated

Clear Height  
**0.000000**

Location  
**KENT, WA**



- Professional image environment
- Extensive improvements underway
- Excellent visibility off of Hwy-181
- Quick access to major area highways
- Flexible floor plan options available
- Ability to expand during initial lease term
- Park now offering outside broker commissions

## FOR MORE INFORMATION

### Sean Durkin

Leasing Agent

Lee & Associates

P. 425.830.2647

E. SDURKIN@LEE-ASSOCIATES.COM

### John Brussa

Leasing Agent

P. 425.891.1424

E. JBRUSSA@LEE-ASSOCIATES.COM

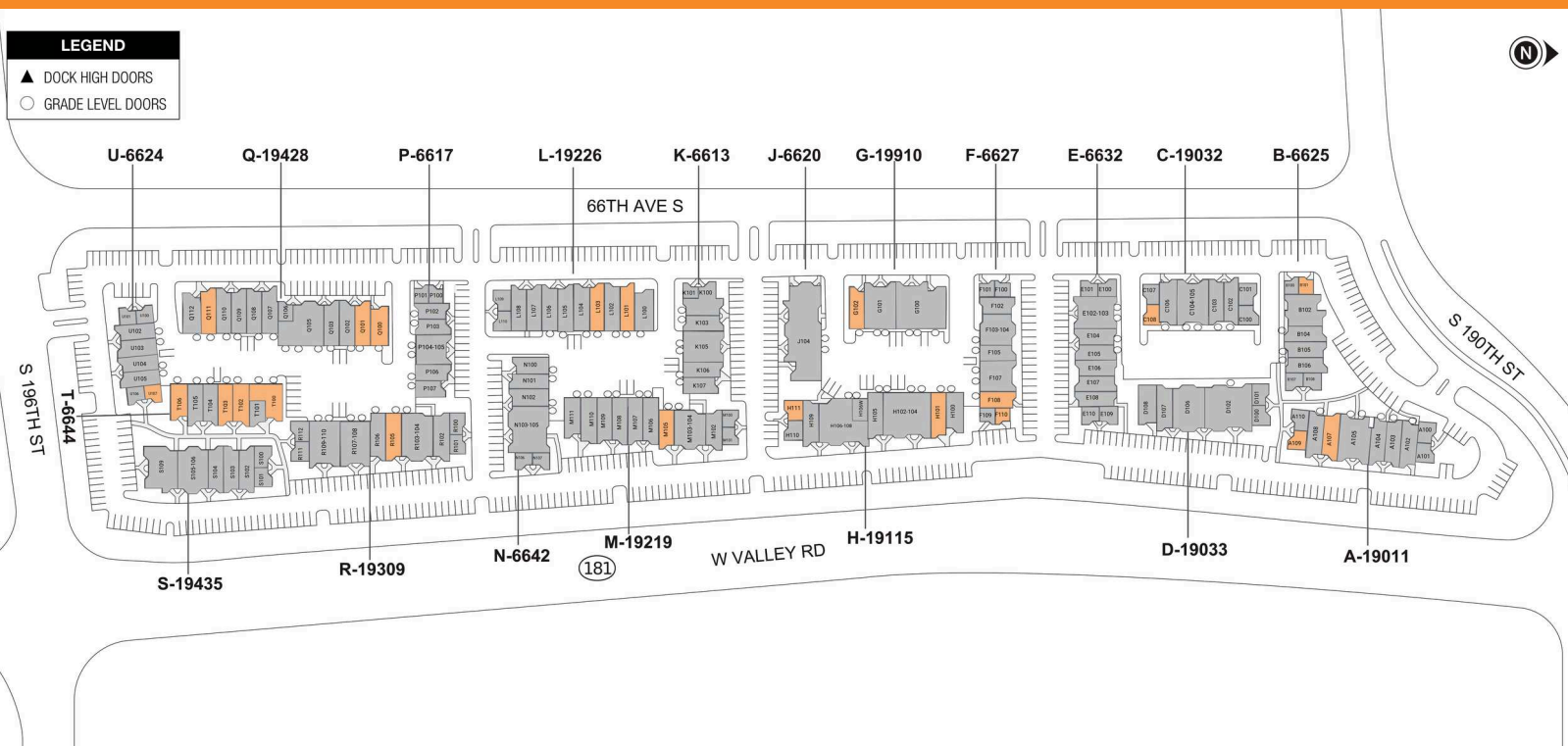
# WEST VALLEY BUSINESS PARK

19226 66th Avenue Kent, WA 98032



**LEGEND**

- ▲ DOCK HIGH DOORS
- GRADE LEVEL DOORS



● AVAILABLE ● OCCUPIED

## CURRENT AVAILABILITIES

BUILDING	SUITE	TOTAL SIZE	OFFICE SIZE	OFFICE %	TYPE	CLEAR HT	GL	DL
A	A107	1,405	1,405	100	OFF	8	0	0
A	A109	700	700	100	OFF	0	0	0
B	B101	505	505	100	OFF	0	0	0
C	C108	700	700	100	OFF	7	0	0
F	F108	1,055	459	44	IND	10	1	0
F	F110	505	505	100	OFF	0	0	0
G	G102	1,420	705	50	1	0		
H	H101	1,418	605	43	IND	0	1	0
H	H106O	598	207	0	IND	0	0	
H	H111	700	700	100	OFF	0	0	0
L	L101	1,409	642	46	IND	10	1	0
L	L103	1,400	458	33	IND	12	1	0
M	M105	1,225	595	49	IND	0	1	0
Q	Q100	1,405	801	57	IND	10	1	0
Q	Q101	1,400	593	42	IND	0	1	0
Q	Q111	1,397	456	33	IND	0	1	0
R	R105	1,406	947	67	IND	10	1	0

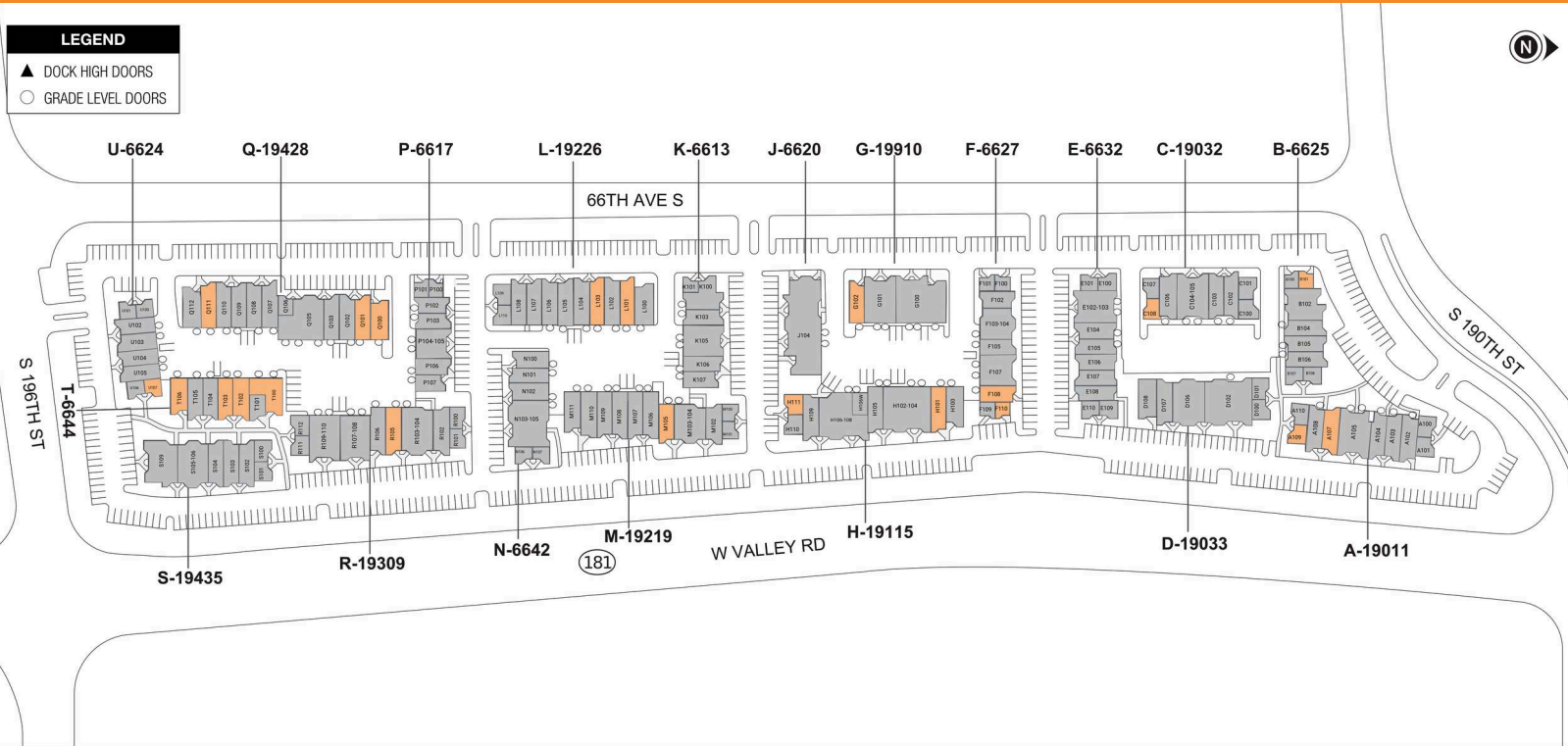
# WEST VALLEY BUSINESS PARK

19226 66th Avenue Kent, WA 98032



**LEGEND**

- ▲ DOCK HIGH DOORS
- GRADE LEVEL DOORS



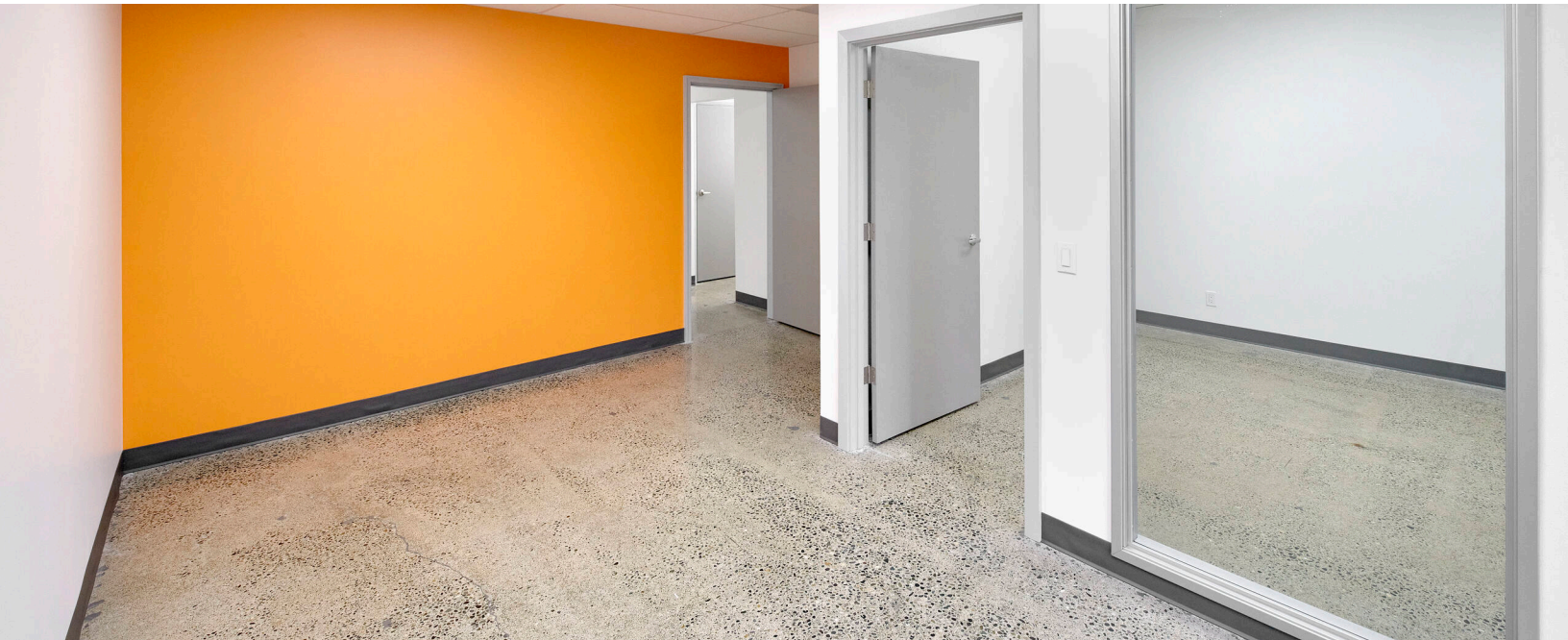
● AVAILABLE ● OCCUPIED

## CURRENT AVAILABILITIES

BUILDING	SUITE	TOTAL SIZE	OFFICE SIZE	OFFICE %	TYPE	CLEAR HT	GL	DL
T	T100	1,819	548	30	OFF	2	0	
T	T102	1,225	769	63	IND	0	1	0
T	T103	1,225	471	38	IND	0	1	0
T	T106	1,200	527	44	IND	0	1	0
U	U107	600	600	100	OFF	0	0	0

# WEST VALLEY BUSINESS PARK

19226 66th Avenue Kent, WA 98032



# WEST VALLEY BUSINESS PARK

19226 66th Avenue Kent, WA 98032

