

# SKYPORT INDUSTRIAL PARK

6620 Escondido Ave Las Vegas, NV 89119



Available SF

**9,904-23,110 SF**

Renovated

Clear Height

Location

**LAS VEGAS, NV**



LOCATED NEAR HARRY REID INTERNATIONAL AIRPORT  
ADJACENT TO I-215, I-15, AND A MAJOR RAILWAY  
CLOSE PROXIMITY TO THE LAS VEGAS STRIP  
AMPLE PARKING ON 5.8 ACRES  
24' CLEAR HEIGHT  
ESFR Fire Sprinkler System

## FOR MORE INFORMATION

**Adam Murray**

Leasing Manager

BKM Management Company

P. 702.359.4858

E. [AMURRAY@BKMMGMT.COM](mailto:AMURRAY@BKMMGMT.COM)

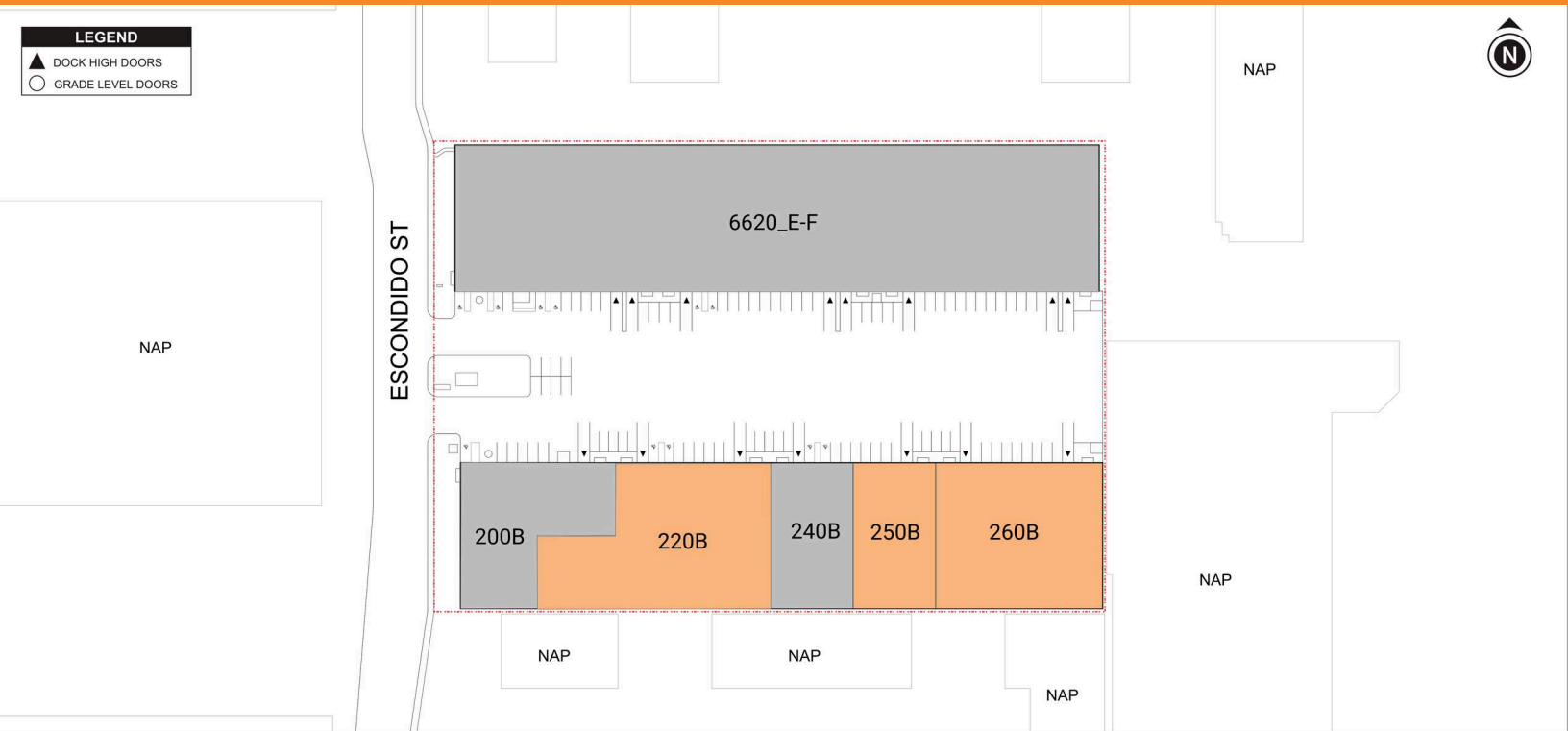
# SKYPORT INDUSTRIAL PARK

6620 Escondido Ave Las Vegas, NV 89119



**LEGEND**

- ▲ DOCK HIGH DOORS
- GRADE LEVEL DOORS



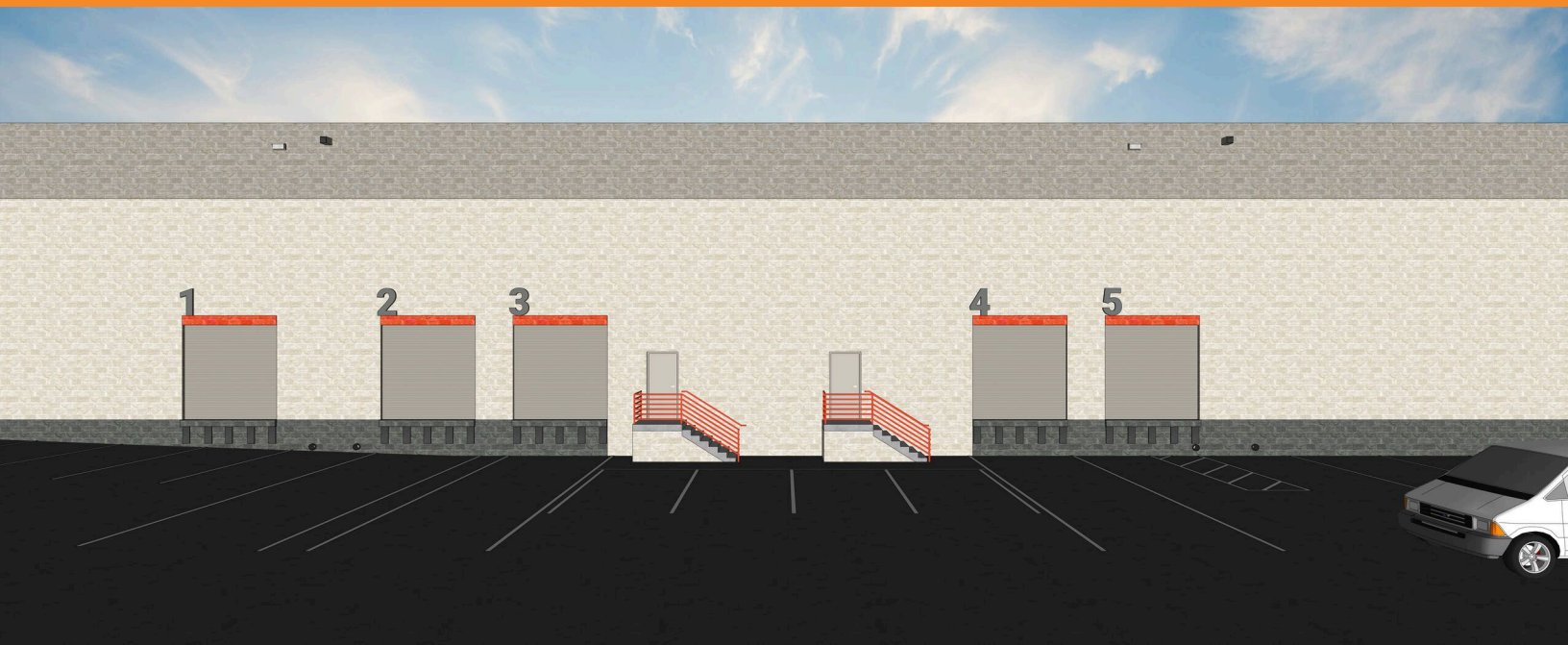
● AVAILABLE ● OCCUPIED

## CURRENT AVAILABILITIES

BUILDING	SUITE	TOTAL SF	OFFICE SF	OFFICE %	TYPE	CLEAR HT	GL	DL
B	220B	23,110	986	4%	IND	25	0	4
B	250B	9,904	986	10%	IND	25	0	2
B	260B	19,819	986	5%	IND	25	0	3

# SKYPORT INDUSTRIAL PARK

6620 Escondido Ave Las Vegas, NV 89119



# SKYPORT INDUSTRIAL PARK

6620 Escondido Ave Las Vegas, NV 89119

