

# CARSON COMMERCE CENTER

20620 S. Leapwood Ave Carson, CA 90746



Available SF  
**1,619-3,088 SF**

Renovated  
**2022**

Clear Height  
**16'-20'**

Location  
**CARSON, CA**



## FOR MORE INFORMATION

### Charles Stern

Leasing Manager  
BKM Management Company  
P. 561.419.3719  
E. [CSTERN@BKMMGMT.COM](mailto:CSTERN@BKMMGMT.COM)

- Industrial property located near the Ports of Los Angeles and Long Beach
- Warehouse suites with grade-level loading and functional layouts
- Strategic access to major freight corridors and regional logistics infrastructure

# CARSON COMMERCE CENTER

20620 S. Leapwood Ave Carson, CA 90746



**LEGEND**

- ▲ DOCK HIGH DOORS
- GRADE LEVEL DOORS



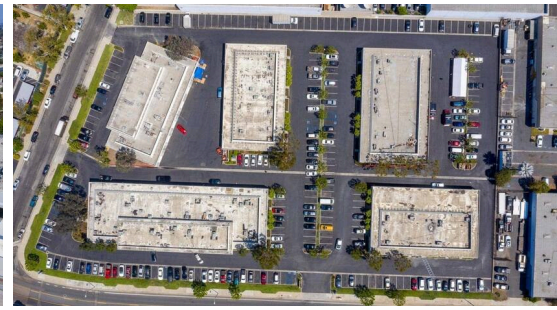
● AVAILABLE ● OCCUPIED

## CURRENT AVAILABILITIES

BUILDING	SUITE	TOTAL SF	OFFICE SF	OFFICE %	TYPE	CLEAR HT	GL	DL
200	200A	1,789	0	0%	N/A	N/A	N/A	N/A
200	200G	3,088	0	0%	N/A	N/A	N/A	N/A
300	300B	1,619	0	0%	N/A	N/A	N/A	N/A
300	300F	1,629	0	0%	N/A	N/A	N/A	N/A

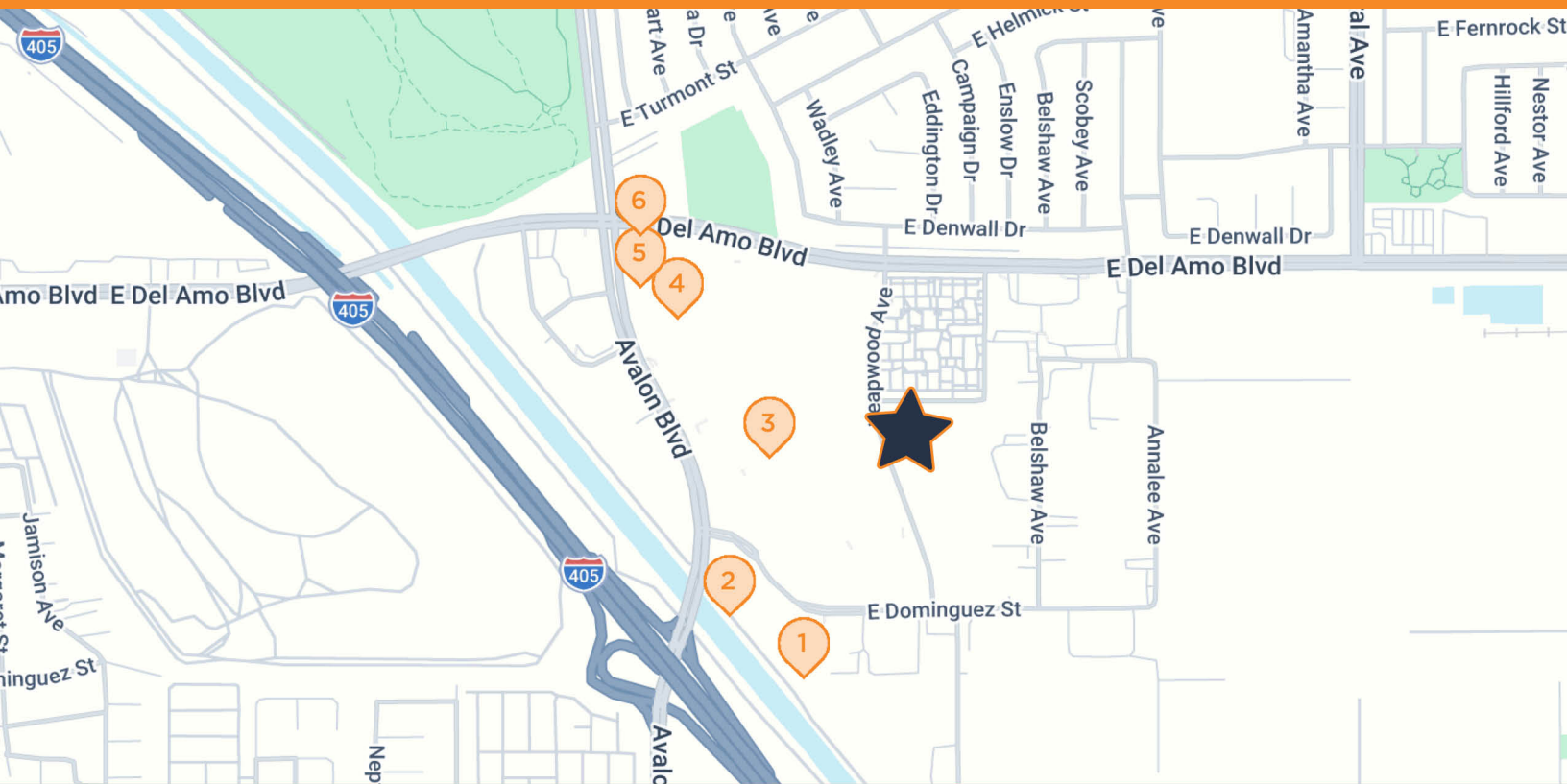
# CARSON COMMERCE CENTER

20620 S. Leapwood Ave Carson, CA 90746



# CARSON COMMERCE CENTER

20620 S. Leapwood Ave Carson, CA 90746



## CARSON COMMERCE CENTER

20620 S. Leapwood Ave, Carson, CA 90746

- |          |   |          |   |
|----------|---|----------|---|
| <b>1</b> | <b>MOTEL 6</b><br>888 E Dominguez St, Carson, CA                          | <b>4</b> | <b>CHIPOTLE</b><br>20420 Avalon Blvd A, Carson, CA  |
| <b>2</b> | <b>FEDEX PRINT &amp; SHIP CENTER</b><br>20820 S Avalon Blvd B, Carson, CA | <b>5</b> | <b>CHEVRON</b><br>20320 Avalon Blvd, Carson, CA     |
| <b>3</b> | <b>TARGET</b><br>20700 S Avalon Blvd, Carson, CA                          | <b>6</b> | <b>STARBUCKS</b><br>20240 S Avalon Blvd, Carson, CA |