

CARSON COMMERCE CENTER

20620 S. Leapwood Ave Carson, CA 90746

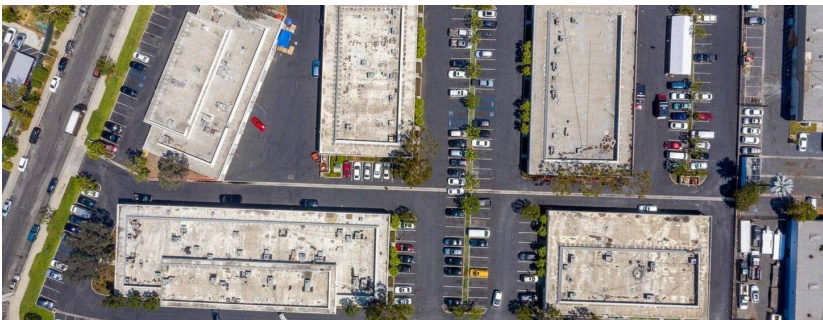


Available SF
1,619-3,088 SF

Renovated
2022

Clear Height
16'-20'

Location
CARSON, CA



FOR MORE INFORMATION

Charles Stern
Leasing Manager
BKM Management Company
P. 561.419.3719
E. CSTERN@BKMMGMT.COM

- Industrial property located near the Ports of Los Angeles and Long Beach
- Warehouse suites with grade-level loading and functional layouts
- Strategic access to major freight corridors and regional logistics infrastructure

CARSON COMMERCE CENTER

20620 S. Leapwood Ave Carson, CA 90746



LEGEND

- ▲ DOCK HIGH DOORS
- GRADE LEVEL DOORS



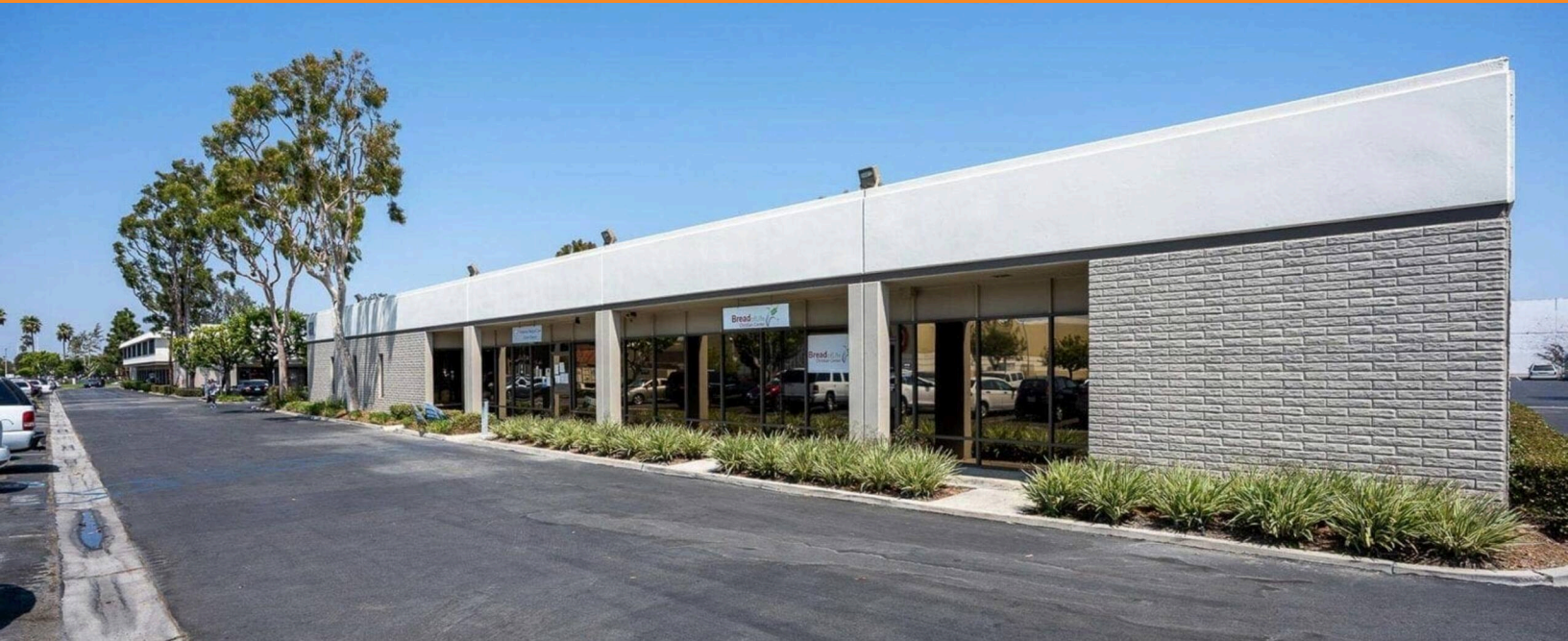
● AVAILABLE ● OCCUPIED

CURRENT AVAILABILITIES

BUILDING	SUITE	TOTAL SF	OFFICE SF	OFFICE %	TYPE	CLEAR HT	GL	DL
200	200A	1,789	0	0%	N/A	N/A	N/A	N/A
200	200G	3,088	0	0%	N/A	N/A	N/A	N/A
300	300B	1,619	0	0%	N/A	N/A	N/A	N/A
300	300F	1,629	0	0%	N/A	N/A	N/A	N/A

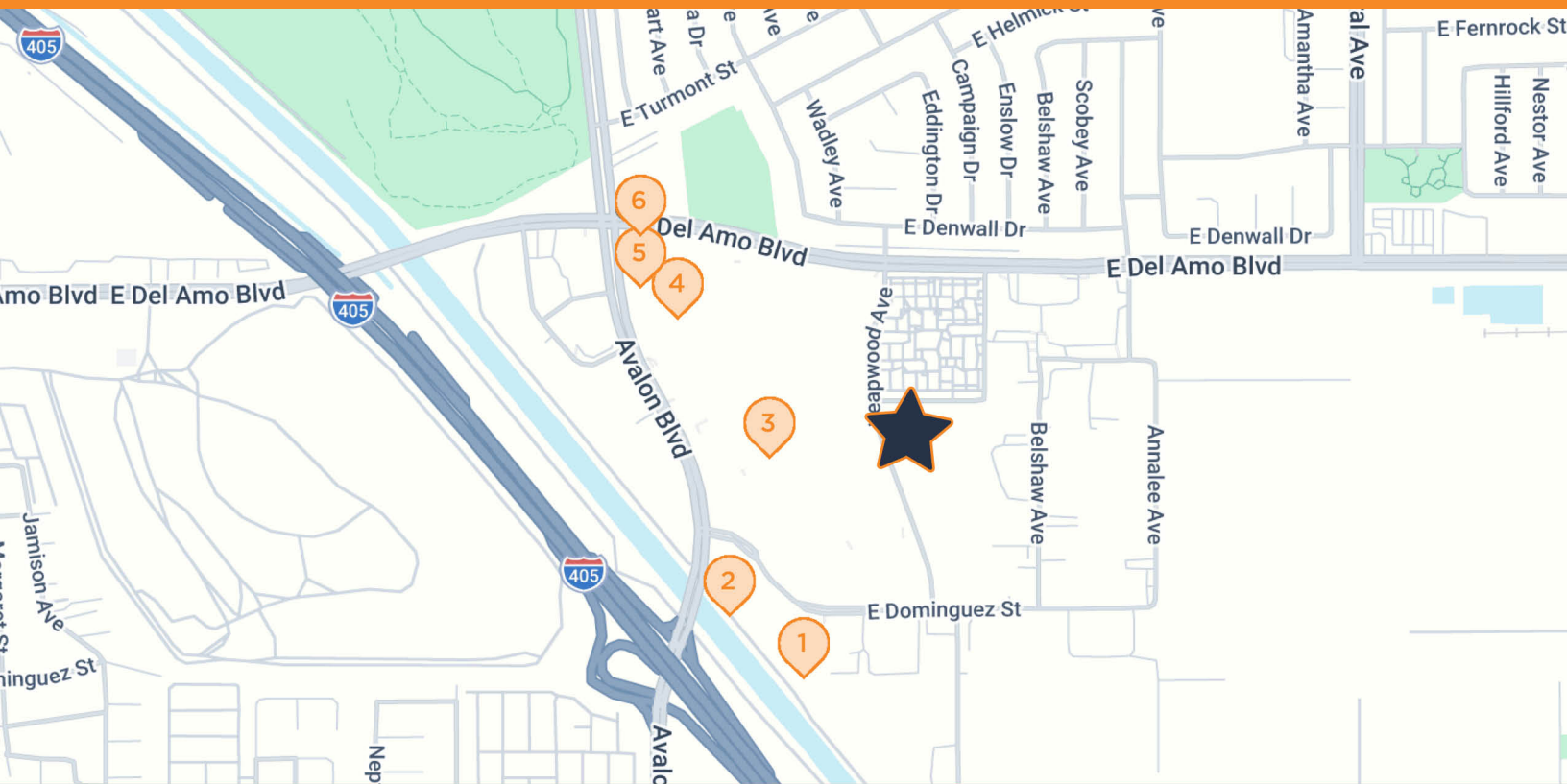
CARSON COMMERCE CENTER

20620 S. Leapwood Ave Carson, CA 90746



CARSON COMMERCE CENTER

20620 S. Leapwood Ave Carson, CA 90746



CARSON COMMERCE CENTER

20620 S. Leapwood Ave, Carson, CA 90746

- | | | | |
|----------|---|----------|---|
| 1 | MOTEL 6
888 E Dominguez St, Carson, CA | 4 | CHIPOTLE
20420 Avalon Blvd A, Carson, CA |
| 2 | FEDEX PRINT & SHIP CENTER
20820 S Avalon Blvd B, Carson, CA | 5 | CHEVRON
20320 Avalon Blvd, Carson, CA |
| 3 | TARGET
20700 S Avalon Blvd, Carson, CA | 6 | STARBUCKS
20240 S Avalon Blvd, Carson, CA |