

# HARBOR BUSINESS CENTER

3601 W. Moore Ave Santa Ana, CA 92704

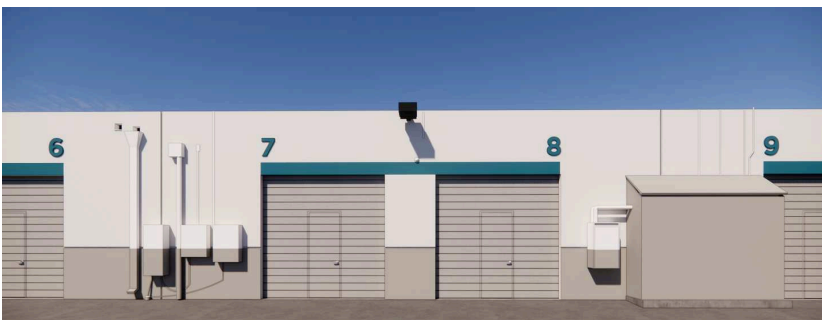


Available SF  
**307-3,880 SF**

Renovated  
**2022**

Clear Height  
**16'-20'**

Location  
**SANTA ANA, CA**



- Industrial park offering flexible warehouse configurations
- Grade-level loading and on-site parking
- Centrally located within Orange County's industrial market

## FOR MORE INFORMATION

### **Nelson Simons**

Leasing Manager  
BKM Management Company  
P. 949.877.7140  
E. NSIMONS@BKMMGMT.COM

### **Skyler Serrano**

Leasing Agent  
Lee & Associates  
P. 949.790.3180  
E. SERRANO@LEEIRVINE.COM

### **Jason Helmick**

Leasing Agent  
Lee & Associates  
P. 949.790.3119  
E. JHELMICK@LEEIRVINE.COM

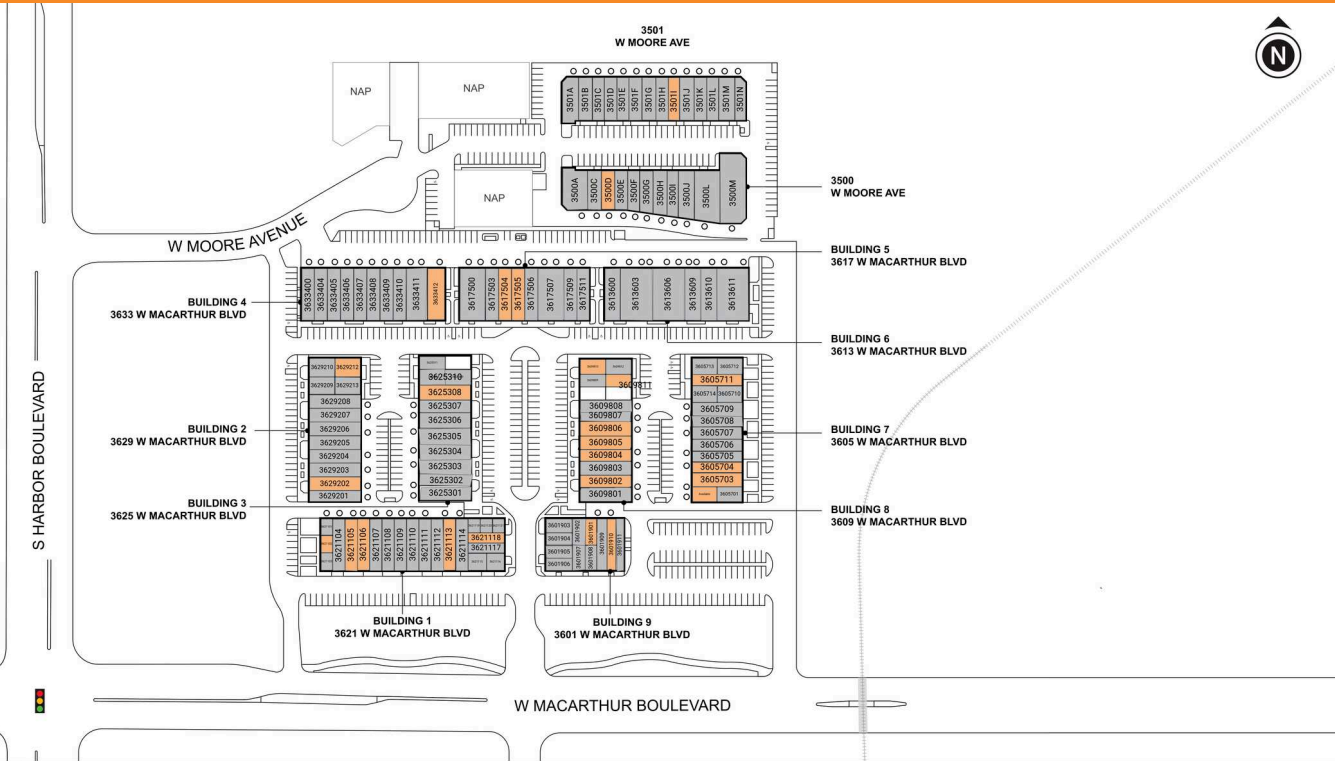
# HARBOR BUSINESS CENTER

3601 W. Moore Ave Santa Ana, CA 92704



**LEGEND**

- ▲ DOCK HIGH DOORS
- GRADE LEVEL DOORS



● AVAILABLE ● OCCUPIED

## CURRENT AVAILABILITIES

BUILDING	SUITE	TOTAL SIZE	OFFICE SIZE	OFFICE %	TYPE	CLEAR HT	GL	DL
8	ACCESS	307	0	0	IND	N/A	N/A	
10	3500D	1,200	0	0	IND	N/A	N/A	
11	3501I	1,300	0	0	IND	N/A	N/A	
9	3601901	780	0	0	OFF	N/A	N/A	
3601910								
3605702								
3605703								
3605704								
3605711								
3609802								
3609804								
3609805								
8	3609806	3,880	0	0	IND	N/A	N/A	
8	3609810	1,113	0	0	OFF	N/A	N/A	
3609811								
5	3617504	1,940	0	0	IND	N/A	N/A	
5	3617505	2,060	0	0	IND	N/A	N/A	



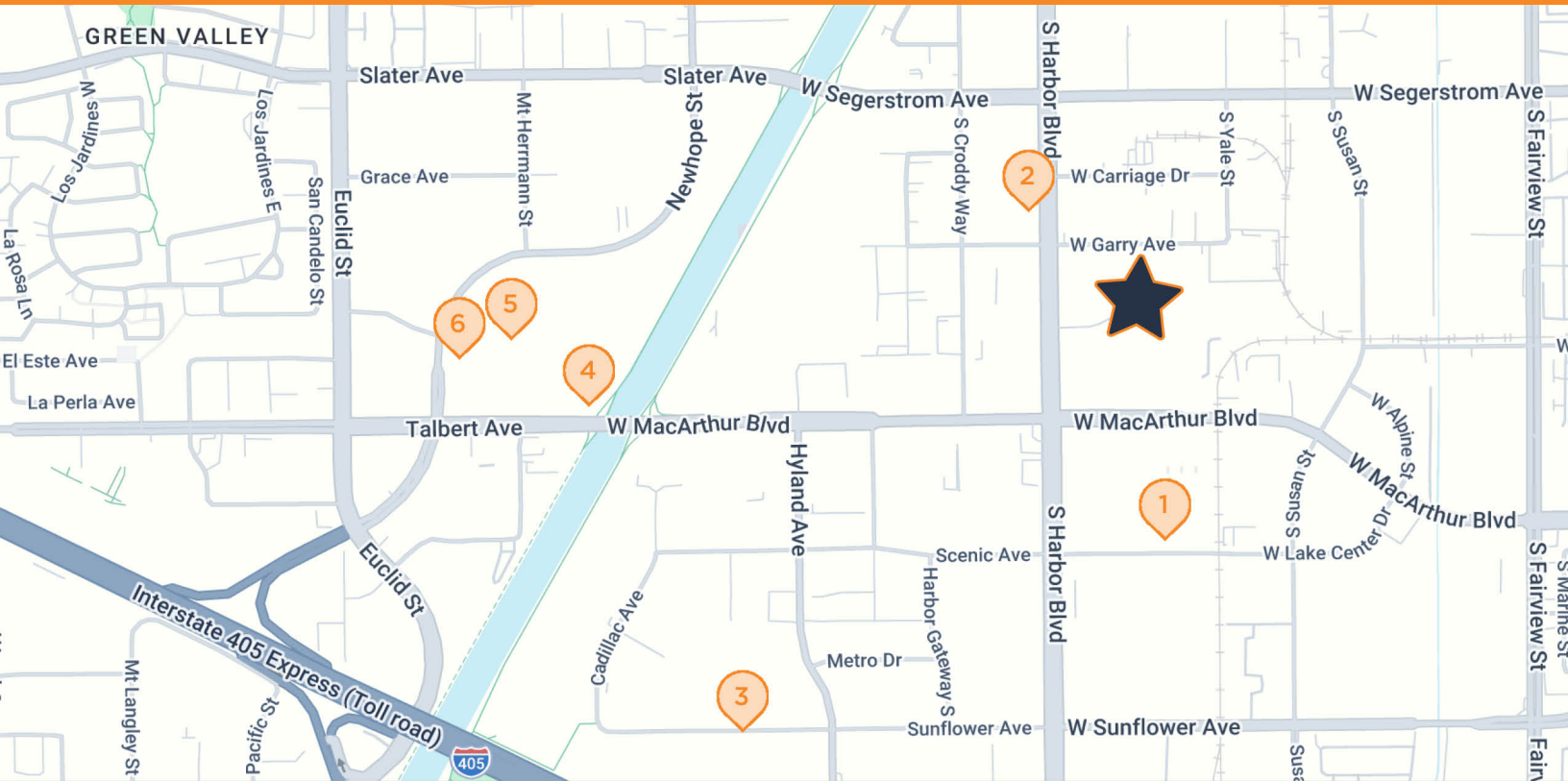
# HARBOR BUSINESS CENTER

3601 W. Moore Ave Santa Ana, CA 92704



# HARBOR BUSINESS CENTER

3601 W. Moore Ave Santa Ana, CA 92704



## HARBOR BUSINESS CENTER

3601 W. Moore Ave, Santa Ana, CA 92704

- |   |   |
|---|---|
| <b>1 THE HOME DEPOT</b><br>3500 W MacArthur Blvd, Santa Ana, CA     | <b>4 COSTCO</b><br>17900 Newhope St, Fountain Valley, CA        |
| <b>2 COURTYARD BY MARRIOTT</b><br>3002 S Harbor Blvd, Santa Ana, CA | <b>5 THE UPS STORE</b><br>17870 Newhope St, Fountain Valley, CA |
| <b>3 FEDEX SHIP CENTER</b><br>1650 Sunflower Ave, Costa Mesa, CA    | <b>6 STARBUCKS</b><br>17850 Newhope St, Fountain Valley, CA     |