

HARBOR BUSINESS CENTER

3601 W. Moore Ave Santa Ana, CA 92704

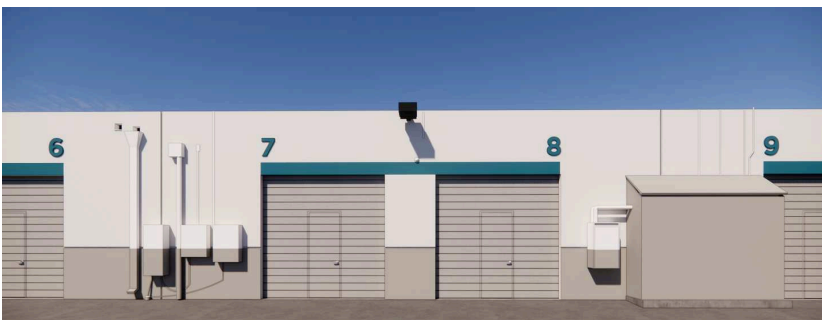


Available SF
307-3,880 SF

Renovated
2022

Clear Height
16'-20'

Location
SANTA ANA, CA



- Industrial park offering flexible warehouse configurations
- Grade-level loading and on-site parking
- Centrally located within Orange County's industrial market

FOR MORE INFORMATION

Nelson Simons

Leasing Manager
BKM Management Company
P. 949.877.7140
E. NSIMONS@BKMMGMT.COM

Skyler Serrano

Leasing Agent
Lee & Associates
P. 949.790.3180
E. SERRANO@LEEIRVINE.COM

Jason Helmick

Leasing Agent
Lee & Associates
P. 949.790.3119
E. JHELMICK@LEEIRVINE.COM

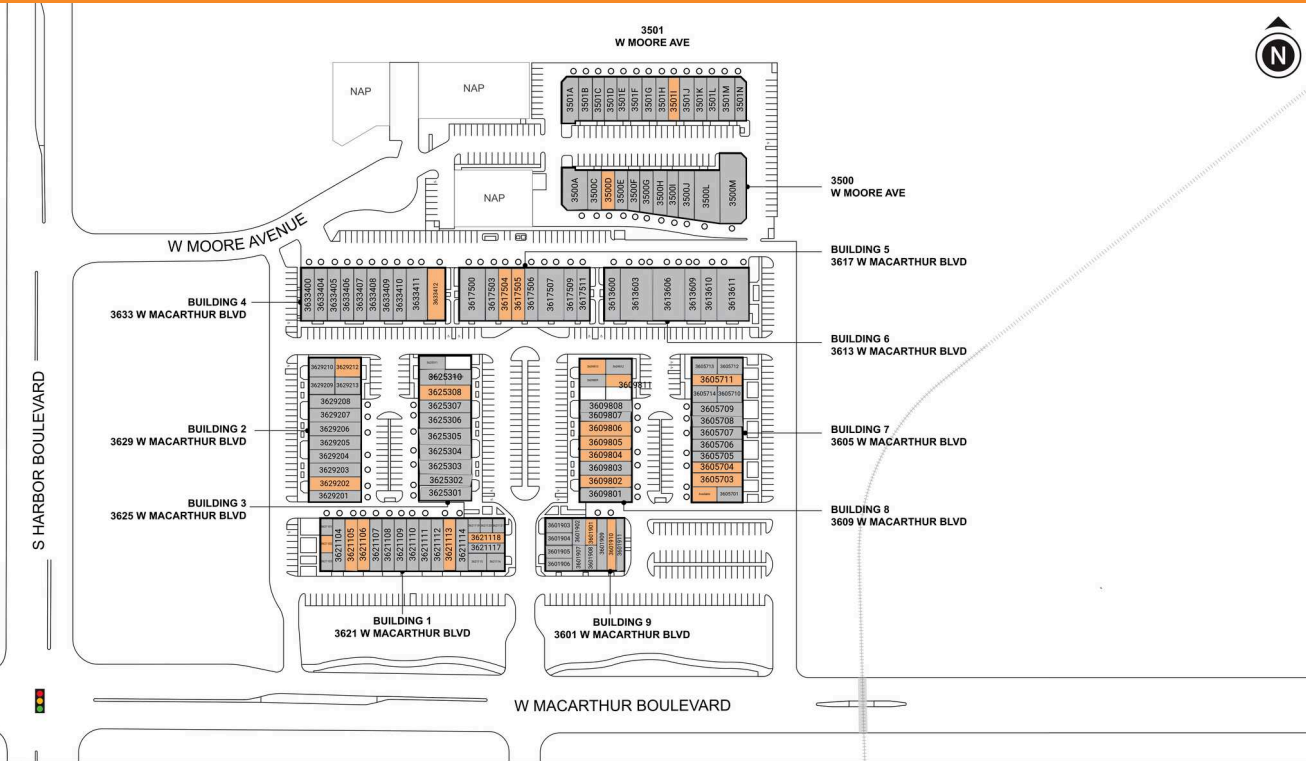
HARBOR BUSINESS CENTER

3601 W. Moore Ave Santa Ana, CA 92704



LEGEND

- ▲ DOCK HIGH DOORS
- GRADE LEVEL DOORS



● AVAILABLE ● OCCUPIED

CURRENT AVAILABILITIES

BUILDING	SUITE	TOTAL SIZE	OFFICE SIZE	OFFICE %	TYPE	CLEAR HT	GL	DL
8	ACCESS	307	0	0	IND	N/A	N/A	
10	3500D	1,200	0	0	IND	N/A	N/A	
11	3501I	1,300	0	0	IND	N/A	N/A	
9	3601901	780	0	0	OFF	N/A	N/A	
3601910								
3605702								
3605703								
3605704								
3605711								
3609802								
3609804								
3609805								
8	3609806	3,880	0	0	IND	N/A	N/A	
8	3609810	1,113	0	0	OFF	N/A	N/A	
3609811								
5	3617504	1,940	0	0	IND	N/A	N/A	
5	3617505	2,060	0	0	IND	N/A	N/A	

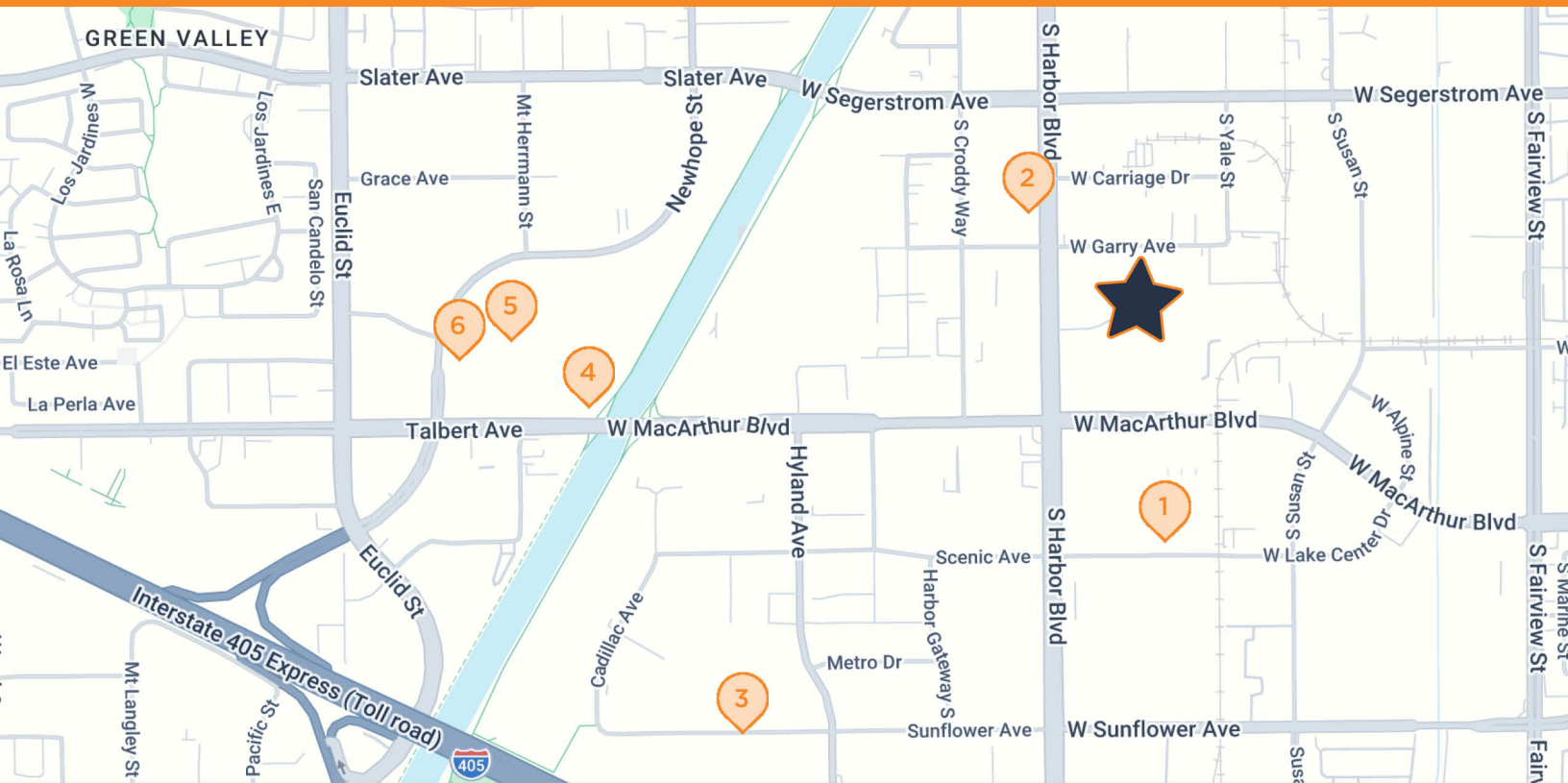
HARBOR BUSINESS CENTER

3601 W. Moore Ave Santa Ana, CA 92704



HARBOR BUSINESS CENTER

3601 W. Moore Ave Santa Ana, CA 92704



HARBOR BUSINESS CENTER

3601 W. Moore Ave, Santa Ana, CA 92704

- | | |
|---|---|
| 1 THE HOME DEPOT
3500 W MacArthur Blvd, Santa Ana, CA | 4 COSTCO
17900 Newhope St, Fountain Valley, CA |
| 2 COURTYARD BY MARRIOTT
3002 S Harbor Blvd, Santa Ana, CA | 5 THE UPS STORE
17870 Newhope St, Fountain Valley, CA |
| 3 FEDEX SHIP CENTER
1650 Sunflower Ave, Costa Mesa, CA | 6 STARBUCKS
17850 Newhope St, Fountain Valley, CA |