

GROVE22 INDUSTRIAL

7211-7215 Garden Grove Blvd. Garden Grove, CA 92841



Available SF
109-2,250 SF

Renovated
2022

Clear Height
16'-20'

Location
**GARDEN GROVE,
CA**



- Industrial property with strong frontage along Garden Grove Boulevard
- Warehouse suites with grade-level loading and office components
- Convenient access to the 22 and 405 freeways

FOR MORE INFORMATION

Lori McAmis

Leasing Manager
BKM Management Company
P. 949.335.5826
E. LMCAMIS@BKMMGMT.COM

Michael J. Bouma

Senior Vice President
Voit Real Estate Services
P. 714.935.2340
E. MBOUMA@VOITCO.COM

Paul Caputo

Leasing Agent
Voit Real Estate Services
P. 714.935.2332
E. PCAPUTO@VOITCO.COM

GROVE22 INDUSTRIAL

7211-7215 Garden Grove Blvd. Garden Grove, CA 92841



LEGEND

- ▲ DOCK HIGH DOORS
- GRADE LEVEL DOORS



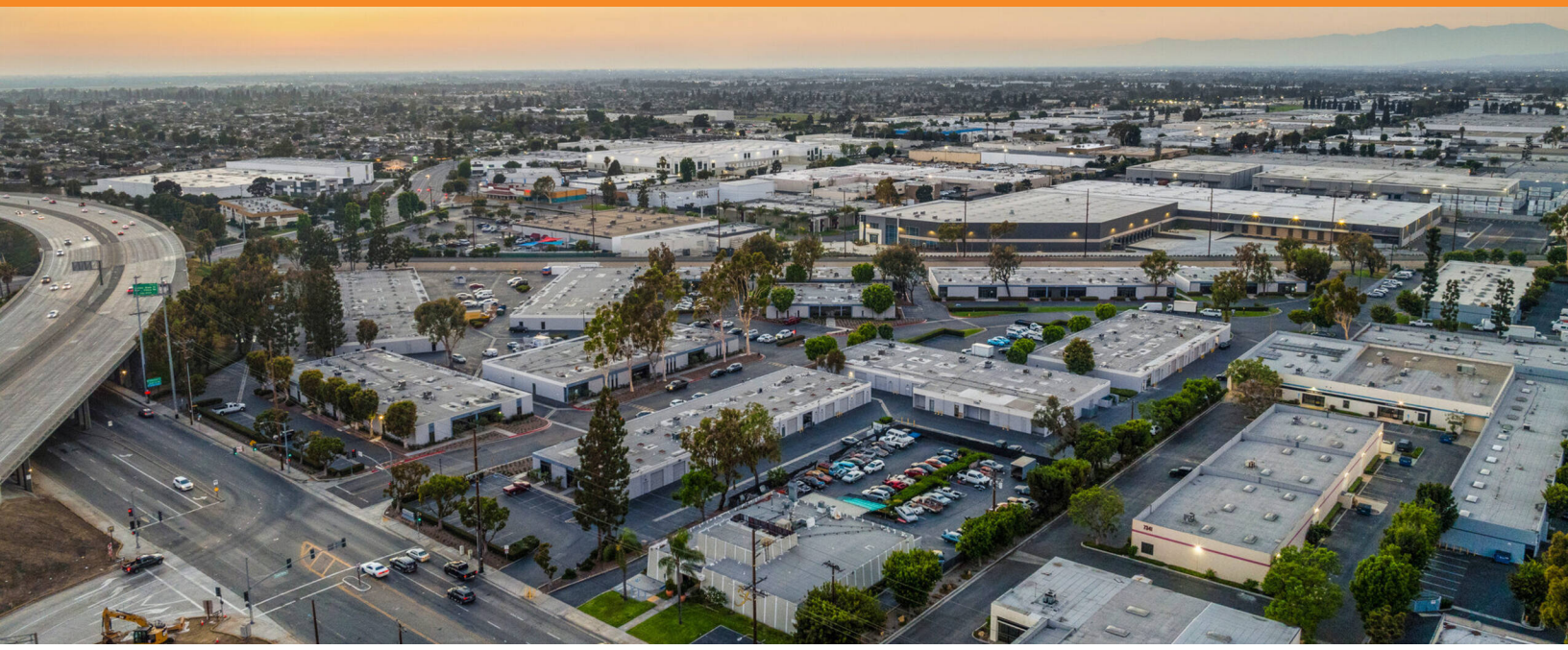
● AVAILABLE ● OCCUPIED

CURRENT AVAILABILITIES

BUILDING	SUITE	TOTAL SF	OFFICE SF	OFFICE %	TYPE	CLEAR HT	GL	DL
A	ELEC	109	0	0%	IND	N/A	N/A	N/A
A	7201K	1,142	0	0%	OFF	N/A	N/A	N/A
B	7211A	2,250	0	0%	IND	N/A	N/A	N/A
C	7221K	2,000	0	0%	IND	N/A	N/A	N/A
F	7245KL	2,000	0	0%	OFF	N/A	N/A	N/A
G	7251D	2,000	0	0%	IND	N/A	N/A	N/A
G	7251J	2,000	0	0%	IND	N/A	N/A	N/A
H	7261B	1,600	0	0%	IND	N/A	N/A	N/A
I	7271C	1,156	0	0%	IND	N/A	N/A	N/A

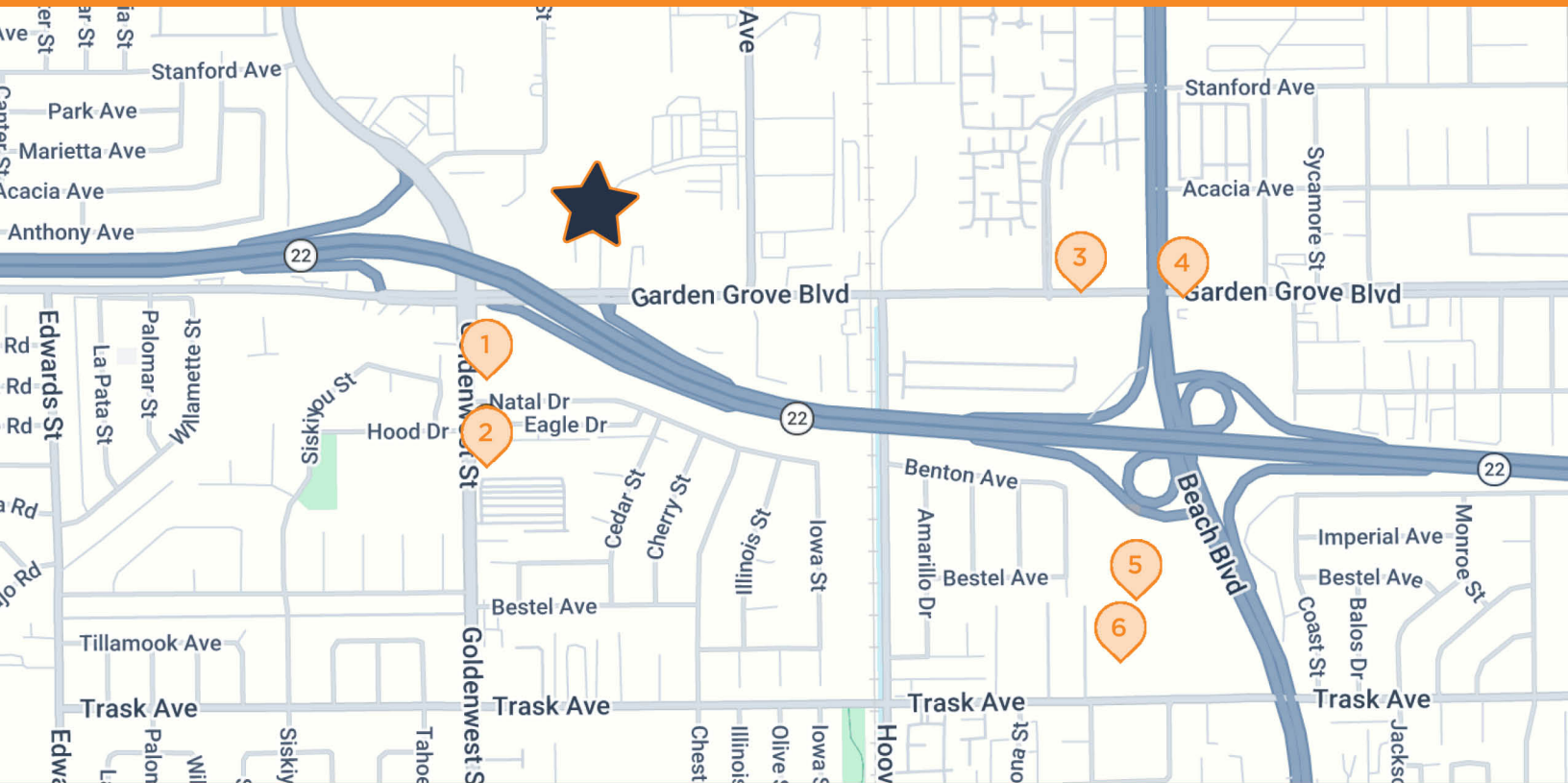
GROVE22 INDUSTRIAL

7211-7215 Garden Grove Blvd. Garden Grove, CA 92841



GROVE22 INDUSTRIAL

7211-7215 Garden Grove Blvd. Garden Grove, CA 92841



GARDEN GROVE INDUSTRIAL PARK

7211-7215 Garden Grove Blvd., Garden Grove, CA 92841

- | | | | |
|----------|--|----------|---|
| 1 | MOTEL 6
13100 Goldenwest St, Westminster, CA | 4 | STARBUCKS
12950 Beach Blvd, Stanton, CA |
| 2 | ARCO
13142 Goldenwest St, Westminster, CA | 5 | COSTCO
13225 Beach Blvd, Westminster, CA |
| 3 | THE UPS STORE
7927 Garden Grove Blvd, Garden Grove, CA | 6 | WALMART
13331 Beach Blvd, Westminster, CA |