

ORILLIA DISTRIBUTION CENTER I

22640 W Valley Highway Kent, WA 98032



Available SF

NO AVAILABILITIES

Renovated

Clear Height

24'

Location

KENT, WA



FOR MORE INFORMATION

Niccolina Merlino

Leasing Manager

BKM Management

P. 206.487.7044

E. NMERLINO@BKMMGMT.COM

- Single, committed tenant — FFWD VE Ventures occupies 100% of the 50,450 SF through May 2029
- Functional yard space — ~6,000 SF fenced yard adjacent to the building, ideal for truck storage and distribution users
- Prime highway access — direct connectivity to SR-167 (1.3 mi), I-5 (2.4 mi), and I-405 (6.4 mi)

ORILLIA DISTRIBUTION CENTER I

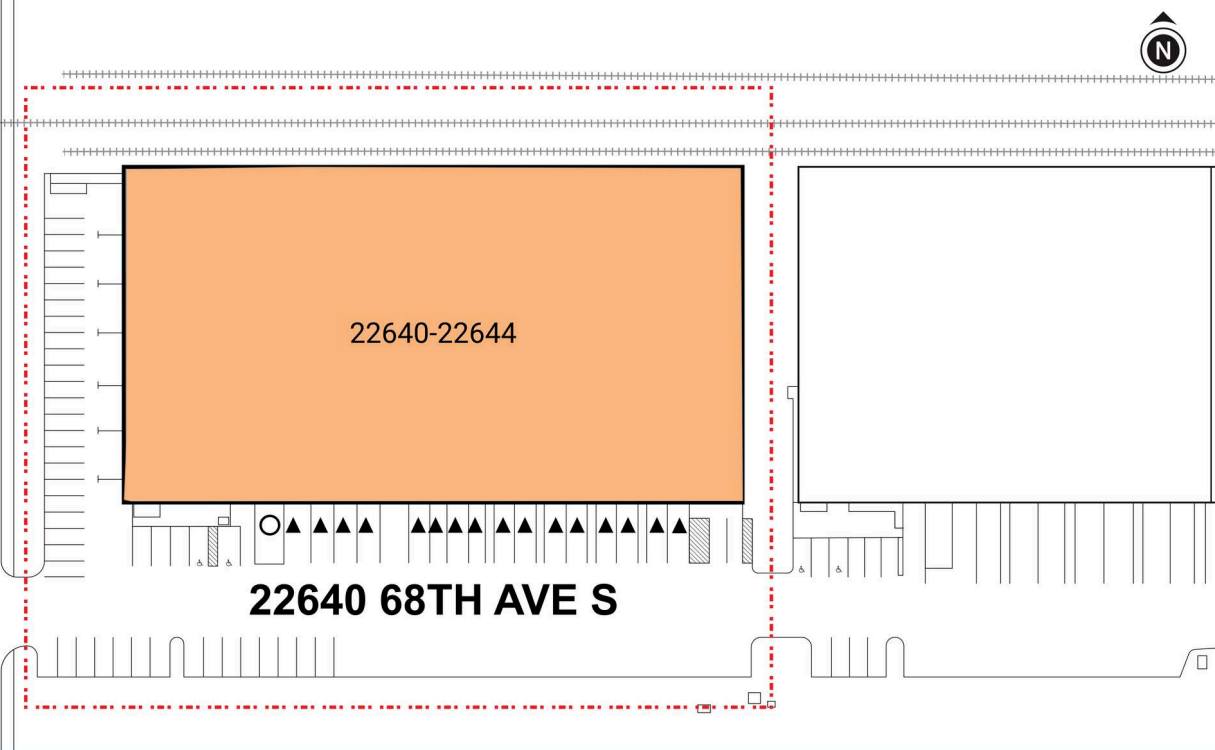
22640 W Valley Highway Kent, WA 98032



LEGEND

- ▲ DOCK HIGH DOORS
- GRADE LEVEL DOORS

68TH AVE S



● AVAILABLE ● OCCUPIED

CURRENT AVAILABILITIES

BUILDING	SUITE	TOTAL SF	OFFICE SF	OFFICE %	TYPE	CLEAR HT	GL	DL
N/a	22640-22644	N/A	N/A	N/A	N/A	N/A	N/A	N/A

ORILLIA DISTRIBUTION CENTER I

22640 W Valley Highway Kent, WA 98032



ORILLIA DISTRIBUTION CENTER I

22640 W Valley Highway Kent, WA 98032

