

# MISSION PARK BUSINESS CENTER

1500-1800 Wyatt Drive Santa Clara, CA 95054



<#



Available SF  
**1,272-1,920 SF**

Renovated  
**2026**

Clear Height  
**15'**

Location  
**SANTA CLARA, CA**



- 94,474 SF four-building R&D/flex campus with grade-level loading, strong power, and abundant parking.
- Prime Silicon Valley location near Highway 101, San Jose Airport, and major tech employers.
- Stable income property with strong occupancy and long-term tenant retention.

## FOR MORE INFORMATION

### Janet Yin

Leasing Manager  
BKM Management Company  
P. 669.306.6074  
E. [JYIN@BKMMGMT.COM](mailto:JYIN@BKMMGMT.COM)

### Bob Simpson

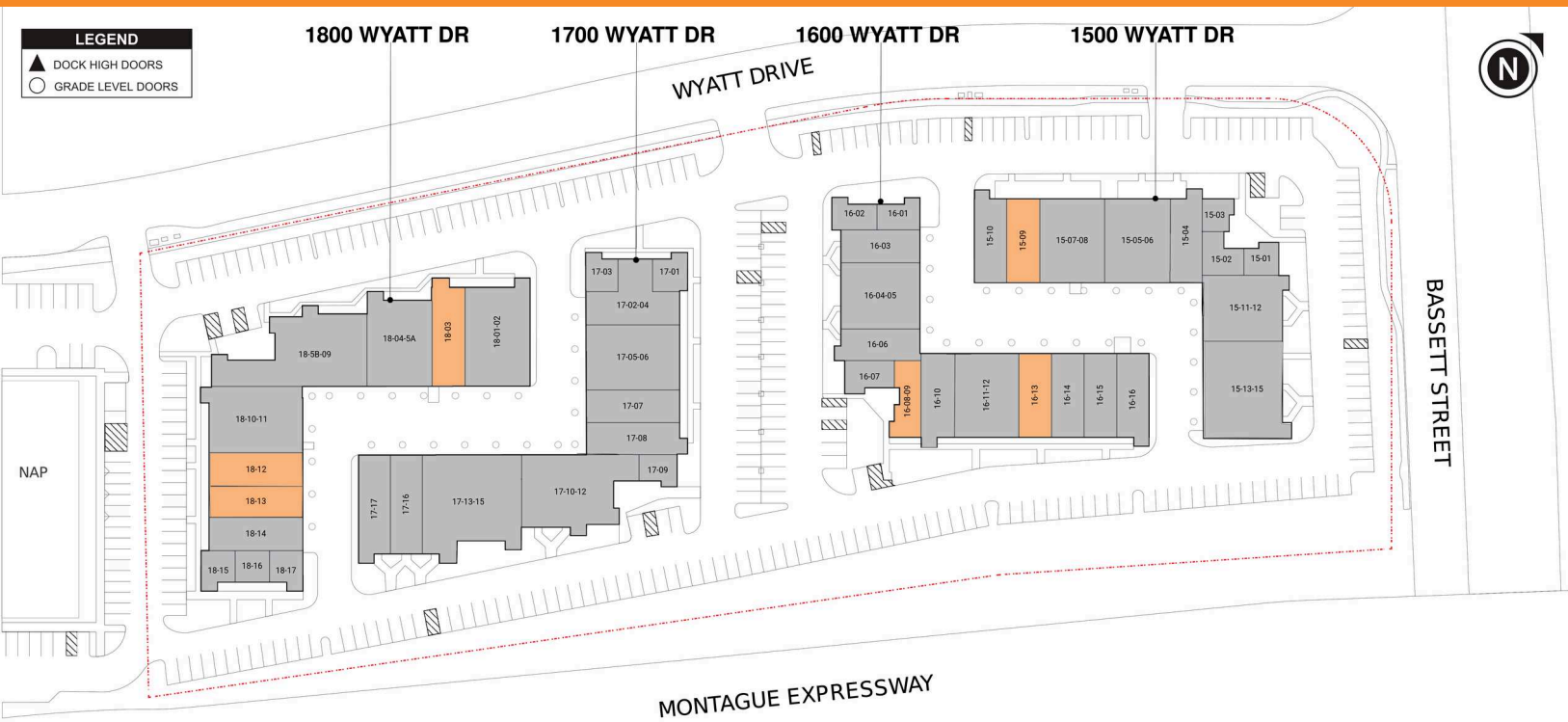
Leasing Agent  
P.  
E. [BOB.SIMPSON@CUSHWAKE.COM](mailto:BOB.SIMPSON@CUSHWAKE.COM)

### Mike Baker

Leasing Agent  
P.  
E. [MIKE.BAKER@CUSHWAKE.COM](mailto:MIKE.BAKER@CUSHWAKE.COM)

# MISSION PARK BUSINESS CENTER

1500-1800 Wyatt Drive Santa Clara, CA 95054



● AVAILABLE ● OCCUPIED

## CURRENT AVAILABILITIES

BUILDING	SUITE	TOTAL SF	OFFICE SF	OFFICE %	TYPE	CLEAR HT	GL	DL
1500	15-09	1,680	1,371	81%	IND	15	1	0
1600	16-08-09	1,272	1,272	100%	IND	0	0	0
1600	16-13	1,680	1,033	61%	IND	14	1	0
1800	18-03	1,920	507	26%	IND	14	1	0
1800	18-12	1,800	1,217	100%	IND	0	0	0
1800	18-13	1,800	1,414	59%	IND	9	2	0

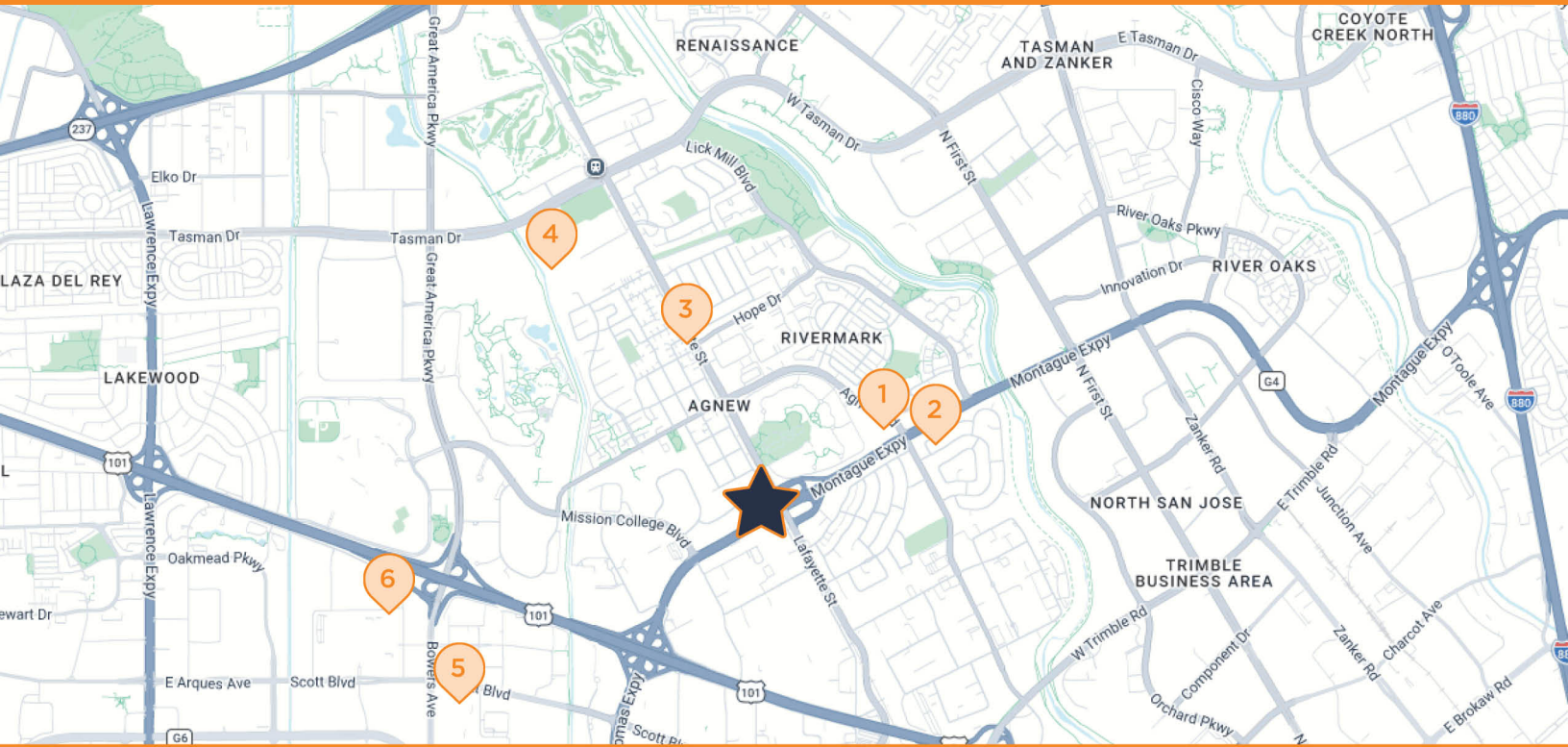
# MISSION PARK BUSINESS CENTER

1500-1800 Wyatt Drive Santa Clara, CA 95054



# MISSION PARK BUSINESS CENTER

1500-1800 Wyatt Drive Santa Clara, CA 95054



## MISSION PARK BUSINESS CENTER

1500, 1600, 1700, 1800 Wyatt Drive, Santa Clara, CA 95054

- |          |   |          |   |
|----------|---|----------|---|
| <b>1</b> | <b>SAFEWAY</b><br>3970 Rivermark Plaza, Santa Clara, CA 95054                   | <b>4</b> | <b>LEVI'S STADIUM</b><br>4900 Marie P DeBartolo Way, Santa Clara, CA 95054      |
| <b>2</b> | <b>PEET'S COFFEE</b><br>3932 Rivermark Plaza, Santa Clara, CA 95054             | <b>5</b> | <b>WHOLE FOODS MARKET</b><br>2732 Augustine Dr Ste 1600, Santa Clara, CA 95054  |
| <b>3</b> | <b>UNITED STATES POSTAL SERVICE</b><br>4601 Lafayette St, Santa Clara, CA 95054 | <b>6</b> | <b>AC HOTEL SAN JOSE SANTA CLARA</b><br>2970 Lakeside Dr, Santa Clara, CA 95054 |